



OUTSIDE

There is a pathway to the rear providing shared pedestrian access along three properties to a alley and Chaucer Street. Beyond this path is the remainder of the garden.



COUNCIL TAX

Northampton Council - Band B

LOCAL AMENITIES

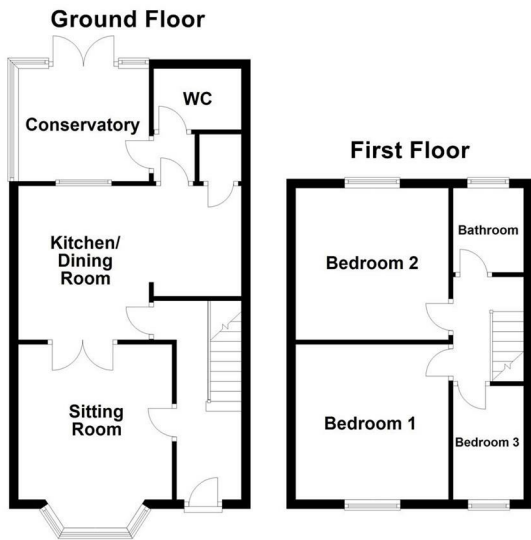
HOW TO GET THERE

From Northampton Town centre take the Kettering road in a Northerly direction. This in turn runs into East Park Parade. At the traffic lights continue straight onto St Mathews Parade and take the sixth turning on the left into Chaucer Street. The property can be found on the left hand side.

COPYRIGHT

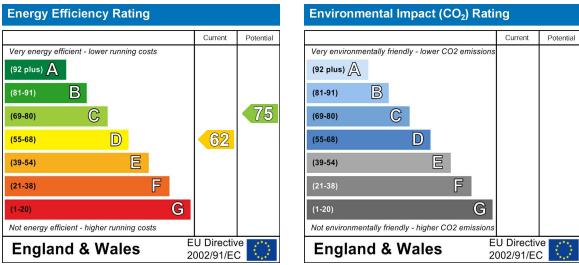
All photographs displayed are the exclusive property of Richard Greener Estate Agents. They are protected under international copyright laws. No photograph may be copied, reproduced, distributed, altered, transmitted, or otherwise used in any form or by any means without prior written permission from the copyright owner. Unauthorised use of these images is strictly prohibited and may result in legal action or a £2,000 fine.

DOI



Not to scale. For illustrative purposes only

You may download, store and use the material for your own personal use and research. You may not republish, retransmit, redistribute or otherwise make the material available to any party or make the same available on any website, online service or bulletin board of your own or of any other party or make the same available in hard copy or in any other media without the website owner's express prior written consent. The website owner's copyright must remain on all reproductions of material taken from this website.



16 Chaucer Street, Northampton, NN2 7HN



Offers Over £205,000 Freehold

An appealing, bay-fronted Victorian terrace with three bedrooms, set in the highly sought-after Poets Corner area of Kingsley. The home offers convenient access to Northampton town centre, The Racecourse, and a range of local amenities. The accommodation includes an entrance hall, sitting room, a kitchen/dining room with integrated cooking appliances, a conservatory, and a cloakroom/utility room. Upstairs are three bedrooms and a family bathroom. Outside, the property enjoys a generously sized rear garden that would benefit from some cultivation. Additional features include gas radiator heating via a combi boiler and uPVC double glazing.





# 16 Chaucer Street, Northampton, NN2 7HN

ACCOMMODATION  
GROUND FLOOR  
ENTRANCE HALL  
SITTING ROOM  
11'2 x 11'1



KITCHEN/DINING AREA  
16'6 x 11'1 max



KITCHEN



INNER HALL  
UTILITY/W.C  
6'3 x 5'5



CONSERVATORY  
8'11 x 8'10



FIRST FLOOR  
BEDROOM ONE  
11'2 x 10'7



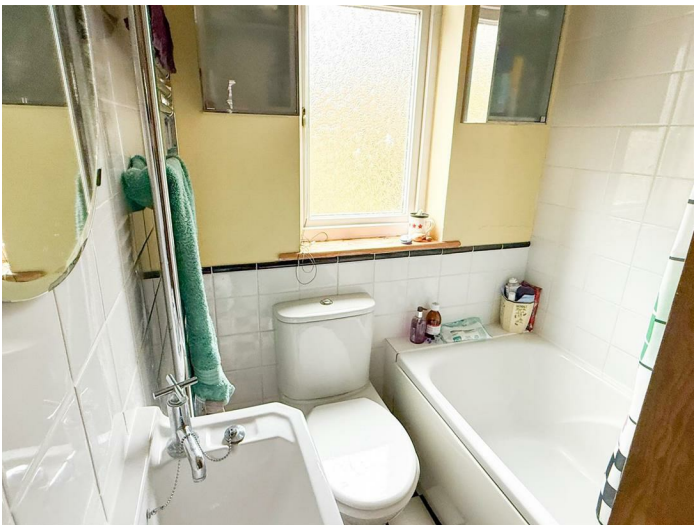
BEDROOM TWO  
11'3 x 11'2



BEDROOM THREE  
8'2 x 5'9



BATHROOM  
5'10 x 4'11



For further information on viewing call 01604 230222