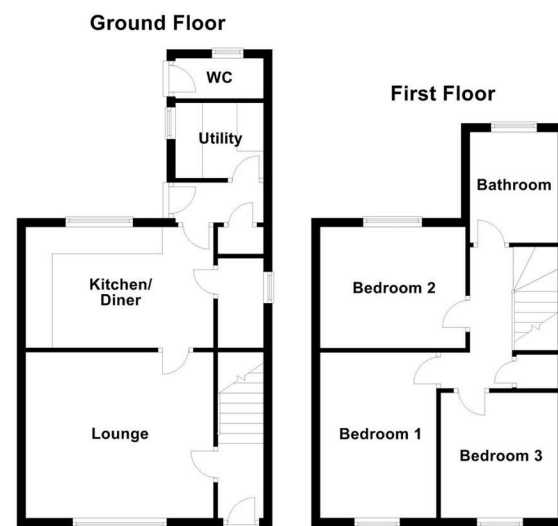


50 Furnace Lane, Nether Heyford, Northampton, NN7 3JT

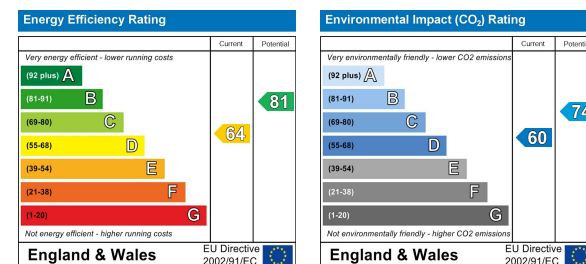


For illustration purposes only - not to scale

Asking Price £285,000 Freehold

An end of terrace property located in the popular village of Nether Heyford. The property accommodation comprises; entrance hall, sitting room with feature fireplace. Kitchen/dining with built-in oven and hob, inner hallway and utility room on the ground floor. On the first floor are three bedrooms and a re-fitted family bathroom. Outside is an enclosed rear garden and block paved driveway to the front of the property for four cars. The property benefits from gas to radiator heating and double glazing. It is also offered with no chain.

You may download, store and use the material for your own personal use and research. You may not republish, retransmit, redistribute or otherwise make the material available to any party or make the same available on any website, online service or bulletin board of your own or of any other party or make the same available in hard copy or in any other media without the website owner's express prior written consent. The website owner's copyright must remain on all reproductions of material taken from this website.



50 Furnace Lane, Nether Heyford, Northampton, NN7 3JT

ACCOMMODATION

ENTRANCE HALL

Enter via double glazed front door to entrance hall. Radiator. Staircase ascending to first floor. Doorway to sitting room.

SITTING ROOM

14'10 x 12'4
Double glazed window to front aspect. Feature fireplace. Wood laminate floor. Doorway to kitchen.



KITCHEN/DINING ROOM

14'4 x 9'5
Base and eye level units comprising; stainless steel one and a half bowl sink unit with mixer tap and cupboard under. Plumbing for dishwasher. Radiator. Built-in gas hob with electric oven under and extractor fan over. Double glazed window to rear aspect. Wall mounted gas boiler. Door to under stairs cupboard with a frosted double glazed window to side aspect. Door to inner hall.



INNER HALL

Double glazed door to rear garden. Door to built-in cupboard and door to utility room.

UTILITY ROOM

6'0 x 5'6
Roll edge work surfaces. Plumbing for washing machine and space for tumble dryer. Double glazed window to side aspect.

LANDING

Access to loft space. Door to stairwell cupboard. Doors to;

BEDROOM ONE

12'4 x 8'5
Double glazed window to front aspect. Radiator.



BEDROOM TWO

10'3 x 9'5
Double glazed window to rear aspect. Radiator. Door to built-in cupboard.



BEDROOM THREE

9'3 x 8'5
Double glazed window to front aspect. Radiator.



BATHROOM

8'3 x 6'0
A re-fitted three piece white suite comprising; panelled bath with fitted shower over. Wash hand basin set in vanity unit and low flush wc. Tiled splash back areas. Frosted double glazed window to rear aspect. Heated towel rail.



OUTSIDE

REAR GARDEN

Block and paved patio area leading to lawn. Enclosed by fencing with gated right of way side access.

OUTHOUSE

Outside wc currently used for storage.

OFF ROAD PARKING

Blocked paved driveway to the front of the property for up to four cars.

SERVICES

Mains drainage, gas, water and electricity are connected.

HOW TO GET THERE

From Northampton proceed in a westerly direction along the A45 Weedon Road and at the roundabout junction with Upton Way carry straight on signposted along the dual carriageway towards Daventry. Continue past the village of Kislingbury and Harpole and straight over the M1 junction 16 and proceed into the village of Upper Heyford and then turn left signposted to Nether Heyford. Upon entering the village continue along Middle Street to the green and turn right at the green and just after the local shop turn left into Furnace Lane and the property can be found further up on the right hand side.

For further information on viewing call 01604 230222