

Bridge Lodge

Nether Heyford, Northamptonshire

RICHARD  GREENER



Bridge Lodge

Middle Street, Nether Heyford,
Northamptonshire.

A modern touch nestled away in the
Northamptonshire Countryside

Accommodation

Ground Floor: Entrance hall | Living room | Kitchen/Diner/Lounge
| Pantry | Utility | 2 WC's | Steam/shower room | Hallway | 3
Double bedrooms | Dressing Room | Two Ensuites | Study | Gym |
Shower room

First Floor: Master bedroom with ensuite and 2 dressing rooms |
Spare bedroom with ensuite and dressing room | Landing |
Balcony

Outside: Rear Garden | Paddock | Double Garage | Swimming
pool | Golf Swing Studio | Parking for 15 cars.

In all 3.3 Acres

RICHARD  GREENER

9 Westleigh Office Park, Moulton Park,
Northampton, NN3 6BW
www.richardgreener.co.uk



Description

Presenting an exquisite five-bedroom detached family residence nestled on the outskirts of Nether Heyford, Northamptonshire. This distinguished contemporary abode showcases an array of opulent amenities, epitomizing luxurious living, and affords an enviable open-plan layout conducive to familial harmony. Set against the backdrop of 3.3 acres of meticulously landscaped gardens, the property spans approximately 5,000 square feet.

The ground floor impresses with its grandeur, featuring a welcoming entrance hall, a commodious living room, and a sprawling 1,500 square feet kitchen/dining room seamlessly integrated with a family area. Additional highlights include a pantry, utility room, steam/shower room, study, gymnasium, and three generously sized double bedrooms, two of which boast ensuite facilities, complemented by a family shower room.

Ascending to the first floor, a tastefully appointed landing grants access to a rear balcony, leading to the master bedroom replete with his and her dressing rooms and an ensuite bath, alongside an additional bedroom with ensuite facilities.

Beyond the interiors lies an outdoor oasis, complete with a heated swimming pool, a golf swing studio, and a double garage accompanied by ample off-road parking space catering to multiple vehicles, including provision for electric car charging. The property is further enhanced by a secure in-and-out driveway bounded by electric gates, ensuring privacy and exclusivity.











Gardens and Outbuildings

Bridge Lodge has extensive gardens surrounded by countryside views. The grounds extend to 3.3 acres which includes a paddock divided by a post and rail fence. There is vehicular access from Main Street which also presents a pedestrian right of way. The main garden is well-stocked with shrubs and mature borders.

To the rear, there is an extensive patio with a carp pond and outside chess board as well as a purpose-built BBQ kitchen with electricity connected. To the side, there is a raised deck with a heated swimming pool and access to the plant room.

Outbuildings include a Golf Swing Studio and a Double garage with off-road parking for multiple vehicles. The front garden is well presented, and access is through in-and-out secure electric gates with intercom.



Bridge Lodge

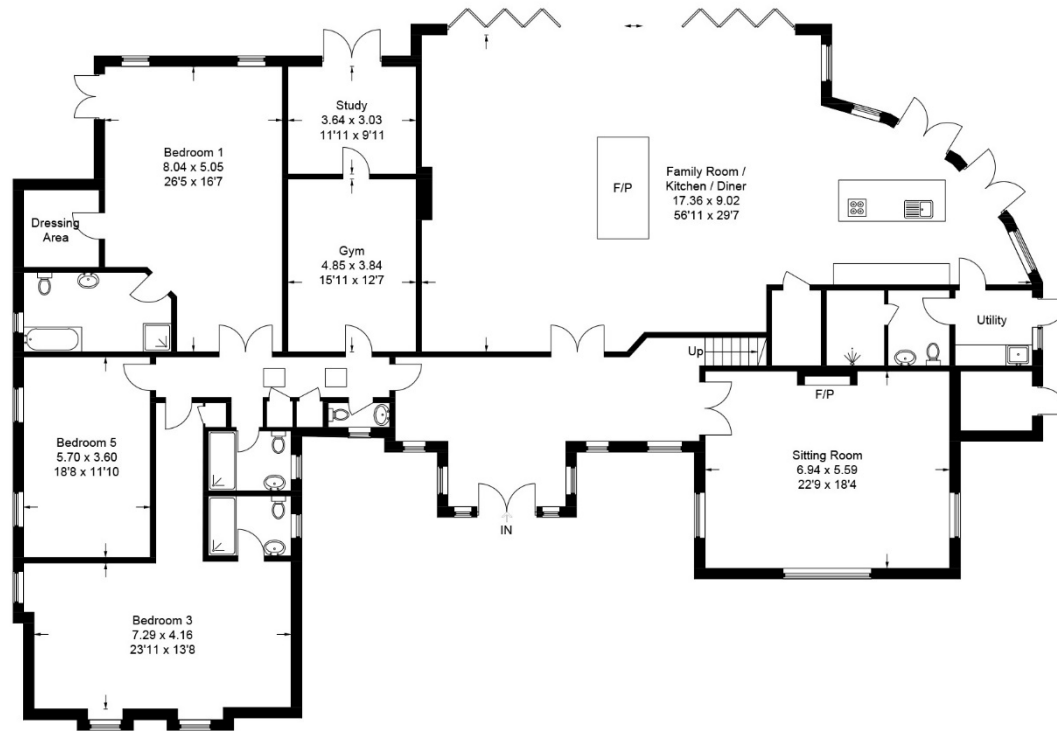
Approximate Gross Internal Area

Ground Floor = 380.8 sq m / 4,099 sq ft

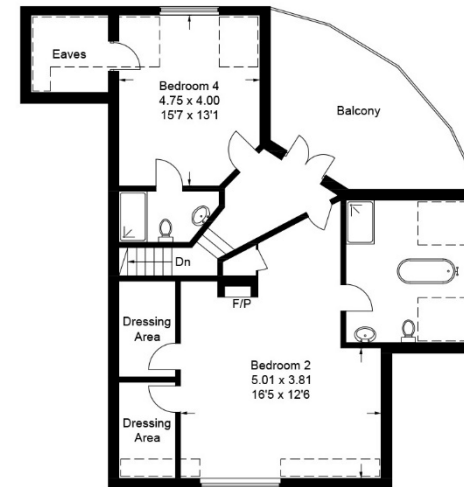
First Floor = 97.7 sq m / 1,052 sq ft

Garage & Outbuilding = 105.1 sq m / 1,131 sq ft

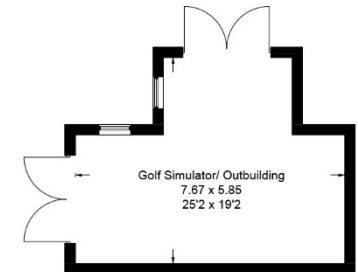
Total = 583.6 sq m / 6,282 sq ft



Ground Floor

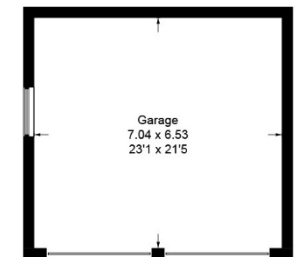


First Floor



(Not Shown In Actual Location / Orientation)

= Reduced headroom below 1.5m / 5'0



(Not Shown In Actual Location / Orientation)

This plan is for layout guidance only. Not drawn to scale unless stated. Windows and door openings are approximate. Whilst every care is taken in the preparation of this plan, please check all dimensions, shapes and compass bearings before making any decisions reliant upon them.



Location

Bridge Lodge is located in Nether Heyford, 7 miles outside of Northampton Town Centre. The closest train station, Long Buckby is accessible within 13 minutes and is on the same line as Northampton, travelling regularly to London Euston and Birmingham.

Within the village, there is a One Stop store incorporating Post Office, Baptist Church, well used Village Hall, the Monday Club, Hairdressers, two Public Houses and Butchers. There is a Village Hall, and facilities including cricket, tennis, football, and bowling club based at the Sports Ground. There is a Recreation Ground and the village green is reputed to be the largest in the country. Access is available to the M1 motorway at junction 16. Educational facilities include the Nether Heyford Primary School and Secondary Education at nearby Bugbrooke at the Champion School with private schools such a Stowe School within 25 minutes.





RICHARD  GREENER