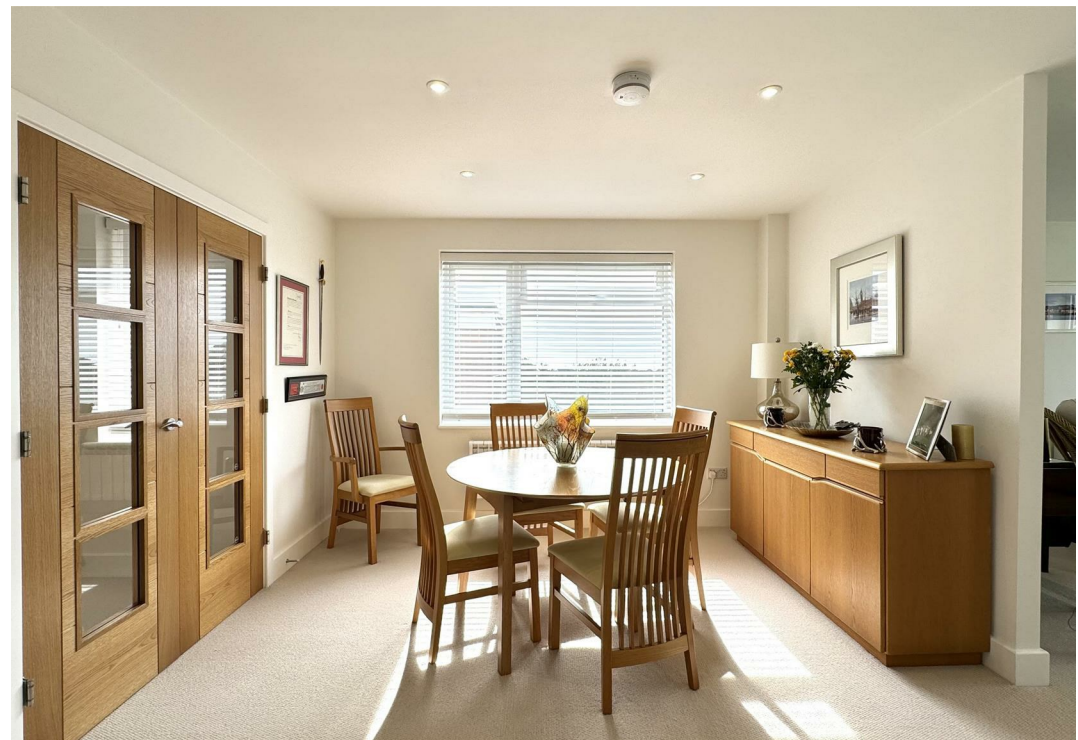




23 Rozel Manor Western Road, Poole BH13 6EX
Offers Over £1,000,000 Share of Freehold





Branksome Park

The property is located in Branksome Park, which covers some 600 acres of tree-lined avenues and roads, regarded as one of the area's premier residential districts and conveniently situated close to award winning blue flag, sandy beaches at Branksome Chine and the world famous Sandbanks Peninsula. The villages of Westbourne and Canford Cliffs are located nearby with their array of eclectic shops, bars, bistros and restaurants. Set approximately midway between the town centres of Poole and Bournemouth, both offering superb shopping, recreational and entertainment facilities. Transport communications are excellent as the main line railway station at Bournemouth provides services to Southampton and London Waterloo. The start of the Wessex way (A338), is located approximately 2 miles away and offers access to the M27 motorway with London being 1 hour 30 minutes commute. Bournemouth and Southampton International Airports are also nearby and there is a ferry terminus at Poole Harbour with services to the Channel Islands and Mainland Europe

Property Comprises

Located in a prestigious gated development with generous communal grounds and situated on the seventh floor with lift access.

This palatial penthouse is perfectly positioned close to Westbourne Village and offers gorgeous far reaching views towards Poole Harbour and Purbecks beyond. Spanning the majority of top floor and including a fabulous terrace it represents a fantastic lifestyle opportunity.

The penthouse at Rozel Manor has undergone a complete refurbishment by the current owners and now offers a palatial and luxurious feel.

The property is spacious and stylish throughout with beautiful interior design creating elegant and relaxed living spaces to include four reception rooms, kitchen breakfast room, four double bedrooms, three bathrooms and ample storage.

The property is conveyed with a double garage and there is also ample visitors parking.

Service charge: £1,590 paid half yearly.

Council Tax: Band F



Total floor area 198.9 sq.m. (2,141 sq.ft.) approx

This floorplan is for illustrative purposes only and is not drawn to scale. Measurements, floor-areas, openings and orientations are approximate. They should not be relied upon for any purpose and do not form any part of an agreement. No liability is taken for any error or mis-statement. All parties must rely on their own inspections.

Key Drummond

Tel: 01202 700771

canfordcliffs@keydrummond.com

www.keydrummond.com

All room dimensions given above are approximate measurements

These particulars are intended only to give a brief description of the property as a guide to prospective buyers. Accordingly:

- Their accuracy is not guaranteed and neither Key Drummond Estate Agents, nor the vendors accept any liability in respect of their contents.
- They do not constitute an offer of contract for sale.
- Any prospective purchasers should satisfy themselves by inspection or otherwise as to the correctness of any statements or information in these particulars. Please refer to the Agents if you require further clarification or information.

The Agent has not tested any apparatus, equipment, fixtures and fittings or services and so cannot verify that they are in working order or fit for the purpose. A buyer is advised to obtain verification from their Solicitor or Surveyor.

References to the Tenure of a Property are based on information supplied by the Seller. The Agent has not had sight of the title documents. A Buyer is advised to obtain verification from their Solicitor.

