



5 Dorset Lake Avenue, Lilliput, Poole BH14 8HX
Prices From £1,875,000 Freehold





A BRAND NEW DEVELOPMENT OF THREE DETACHED LUXURY DETACHED HOUSES WITH VIEWS OVER POOLE HARBOUR.

Positioned in a sought after location only minutes from SANDBANKS BEACH, offering flexible and luxurious accommodation arranged over three floors.

- Stunning location close to Poole Harbour & the famous Sandbanks Beach
- Harbour views
- Contemporary & stylish with high end finishes
- Designer kitchen with marble quartz countertops
- Siemens Kitchen appliances
- Beautiful appointed bathrooms by Porcelanoso
- Underfloor heating & Intergrated Sky Q access
- Flexible layout set over 3 floors 1824 sq ft & 2164 sq ft
- Internal garage & driveway parking
- Private courtyard garden

Lilliput

The property is located in the heart of Lilliput and within a short level walk to local shops. Lilliput offers an array of shops including well known convenience stores, hairdressers, bike & surf shops, restaurants & cafes including an award winning patisserie. Salterns Marina is close by, as is the renowned Parkstone Bay Marina offering superb boating facilities as well as the highly regarded South Deep Café set on a beautiful waterfront location with indoor and outdoor seating. The prestigious Parkstone Golf Club and the Blue Flag beaches of Sandbanks are just a stone's throw away. At the end of Sandbanks Peninsula is the chain link ferry giving vehicular and pedestrian access to the many miles of National Heritage coastline of the Isle of Purbeck. Lilliput is ideally located for those needing travel connections to London, the rest of Europe and beyond. London Waterloo can be reached in under two hours via train and road while Bournemouth International Airport offers both internal and international flights to a variety of destinations.

Property Comprises

Three luxurious new 4 bedroom detached homes in an enviable location close to Sandbanks beach, with Poole Harbour Views.

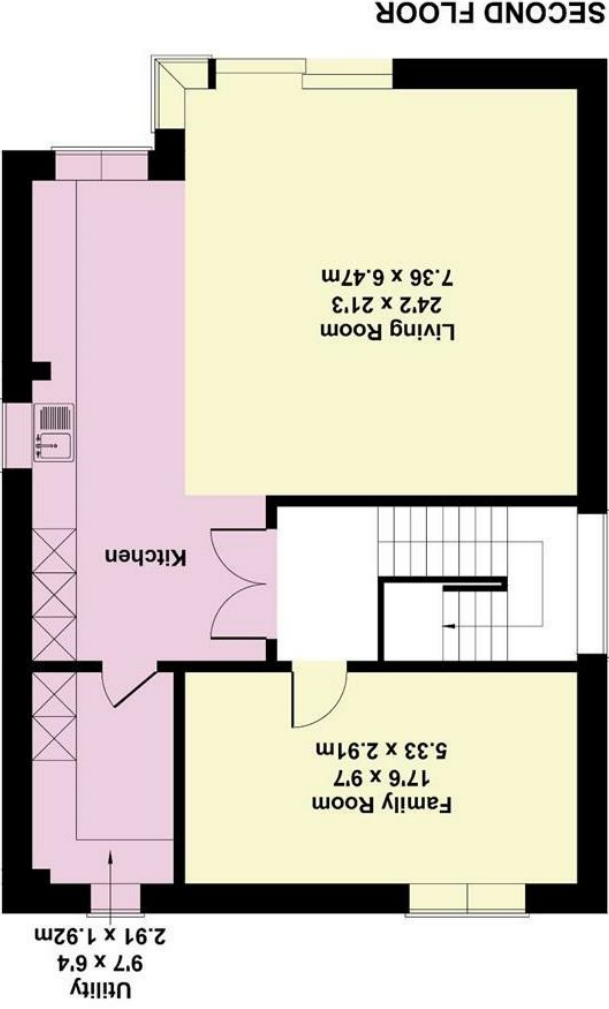
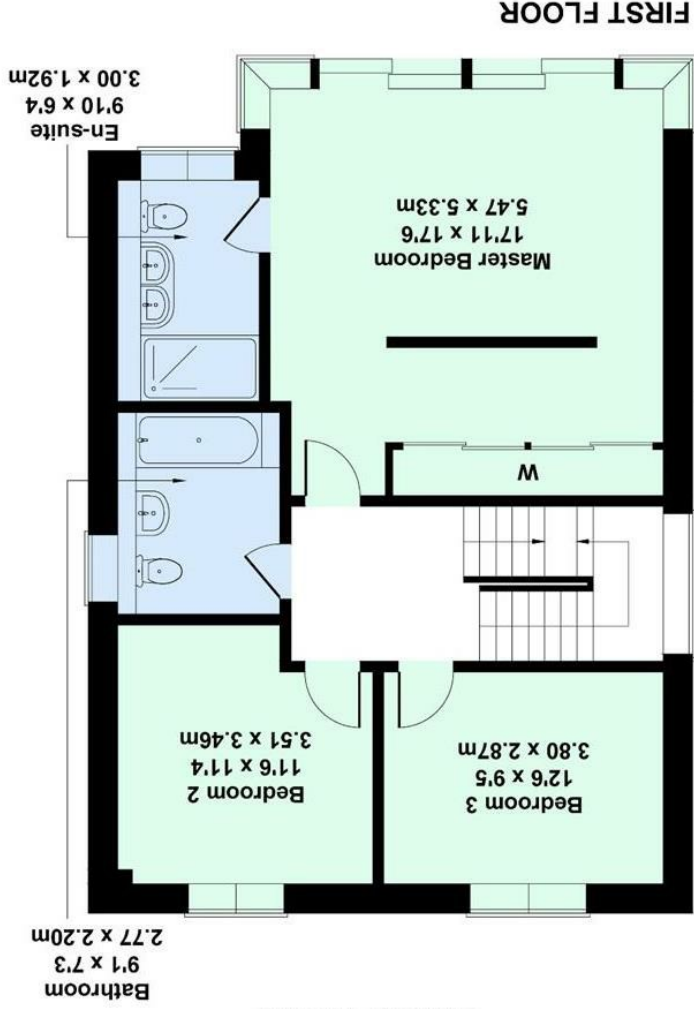
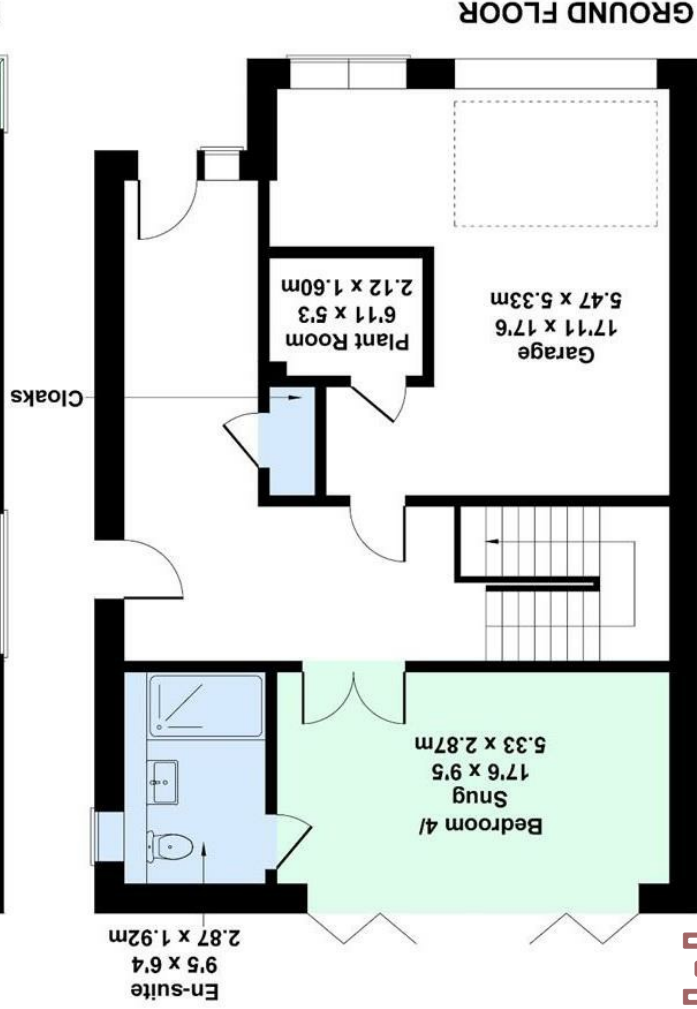
A development of three brand new luxury homes on a very sought after road in Lilliput, each is detached and includes three floors of stylish and flexible accommodation, integral garage and private garden. Gorgeous homes in a fabulous location providing an enviable coastal lifestyle.

We are delighted to offer to the market these exclusive new homes currently approaching completion on Dorset Lake Avenue in Lilliput. This exclusive development is perfectly situated close to the amenities of Lilliput village, Poole Harbour and the Blue Flag beaches of Sandbanks. The location is close to the water with lovely harbour vista views available from the upper floors setting a perfect scene for a fun and relaxing coastal lifestyle.

Calypso, Skylark and Skyliner

Due for completion December 2023. Site visits available by appointment only.





Calypso, 5a Dorset Lake Avenue
 Approximate Gross Internal Area
 2691 sq ft - 250sq m

Not to Scale. Produced by The Plan Portal 2022
 For Illustrative Purposes Only.

All room dimensions given above are approximate measurements
 These particulars are intended only to give a brief description of the property as a guide to prospective buyers. Accordingly:
 • Their accuracy is not guaranteed and neither Key Drummond Estate Agents, nor the vendors accept any liability in respect of their contents.
 • They do not constitute an offer of contract for sale.
 • Any prospective purchaser should satisfy themselves by inspection or otherwise as to the correctness of any statements or information in these particulars. Please refer to the Agents if you require further clarification or information.

The Agent has not tested any apparatus, equipment, fixtures and fittings or services and so cannot verify that they are in working order or fit for the purpose. A buyer is advised to obtain verification from their Solicitor or Surveyor.

References to the Tenure of a Property are based on information supplied by the Seller. The Agent has not had sight of the title documents. A Buyer is advised to obtain verification from their Solicitor.

Energy Efficiency Rating	
Energy efficiency - meter reading table	Class
	A B C D E F G

Environmental Impact (CO ₂) Rating	
Environmental Impact - meter CO ₂ emissions	Class
	A B C D E F G