



90 Lower Green Road, Esher
£1,800 pcm

90 Lower Green Road

Esher, Esher

A modern, two bedroom semi-detached house perfectly placed for easy access on foot to Esher train station.

Council Tax band: D

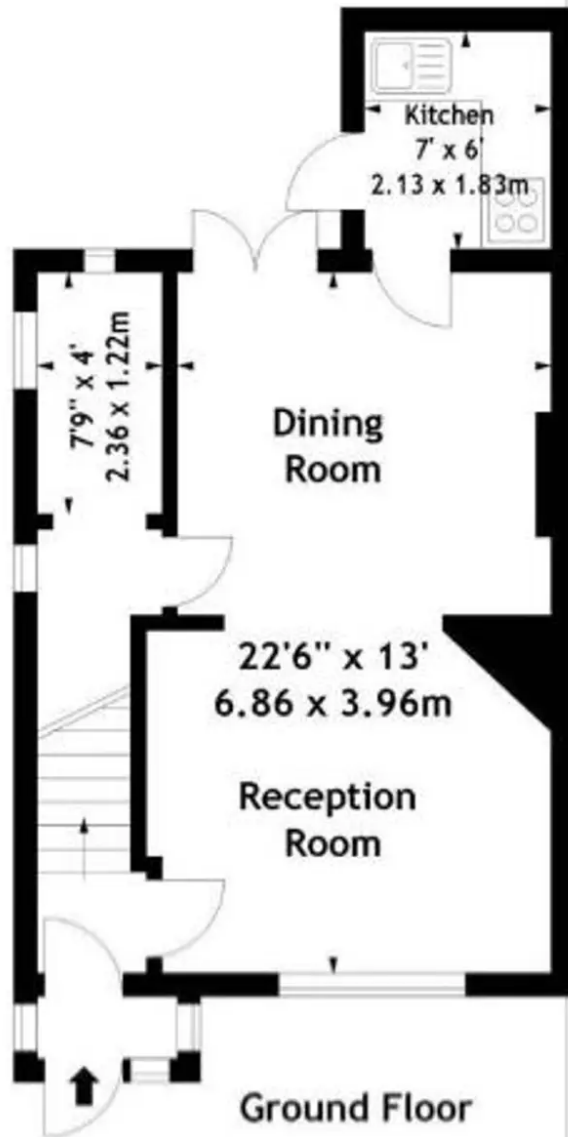
Tenure: Freehold

- Two double bedrooms
- Modern kitchen and bathroom
- Off street parking
- Separate utility room
- Private garden
- Close proximity to Esher station
- Unfurnished
- Available now





Garden
20'9" x 17'
6.32 x 5.18m
(approximate)



Lower Green Road, KT10
Approx. Gross Internal Area
801 Sq Ft - 74.41Sq M

