



21 Chesterfield Drive, Esher
£3,000 pcm

21 Chesterfield Drive

Esher

A well presented four bedroom 1930's detached family home ideally located for Hinchley Wood's much sought after schools.

Council Tax band: F

Tenure: Freehold

- Detached house
- Four bedrooms
- Ample storage
- Off street parking
- Large kitchen/dinning area
- Unfurnished
- Available from 1st April





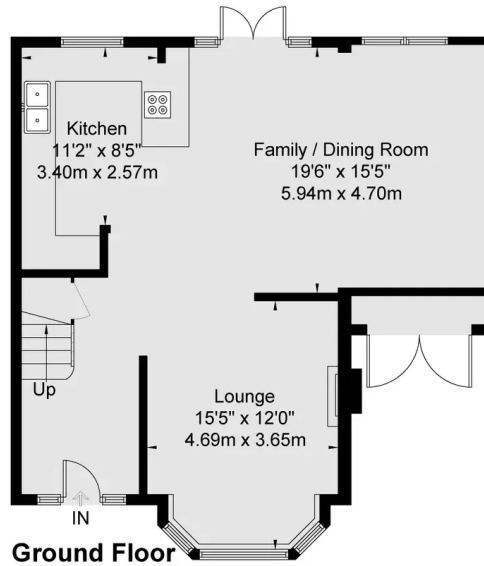
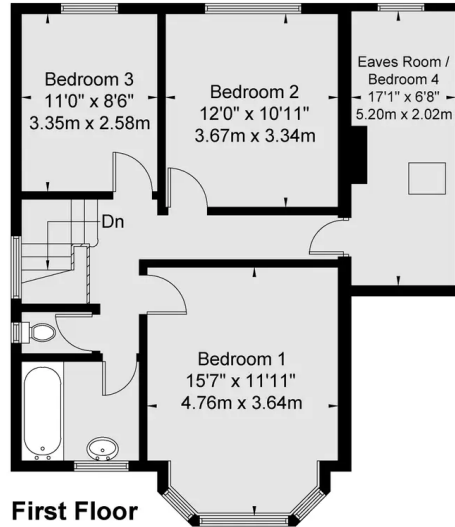
Chesterfield Drive

Approx Gross Internal Area

Ground Floor = 67.7 Sq m 729 Sq Ft

First Floor = 66.3 Sq m 713 Sq Ft

Total = 134.0 Sq m / 1442 Sq Ft



Copyright @ 2023
Copyright.co.uk

Whilst every attempt has been made to ensure the accuracy of this floor plan, measurements of doors, windows and rooms are approximate and no responsibility is taken for any error or omission. This illustration is for identification purpose only. Measured and drawn accordance with RICS guidelines. Not drawn to scale, unless stated. Dimensions shown are to the nearest 3" and are to the points indicated by the arrow heads.