



**Snow
Gate™**

**Estate
agency
done
properly**



211 Kitson Hill Road , Mirfield, WF14 9DS

A two bedroom end terrace house which has been fully refurbished in recent years and internally resembles that of a new home. Conveniently located a short distance to the centre of town and within walking distance to local schools. The railway station connects neighbouring towns and cities such as; Huddersfield, Leeds and Manchester, as well as having a direct line to London. Enjoying generous South-facing gardens and fabulous far-reaching views to the front aspect - it presents an impressive setting for outdoor entertaining! Motorway networks are also nearby. The driveway provides off road parking.

£215,000

211 Kitson Hill Road

, Mirfield, WF14 9DS



- TWO BEDROOM END TERRACE HOUSE
- CLOSE TO THE CENTRE OF TOWN & AMENITIES
- FULLY REFURBISHED
- MOTOWAY NETWORKS & PUBLIC TRANSPORT LINKS NEARBY
- FABULOUS, FAR-REACHING VIEWS
- LARGE PLOT WITH GARDENS TO TWO SIDES & OFF ROAD PARKING

Dining Kitchen

Shower Room

Cellar

Lounge

First Floor Landing

WC

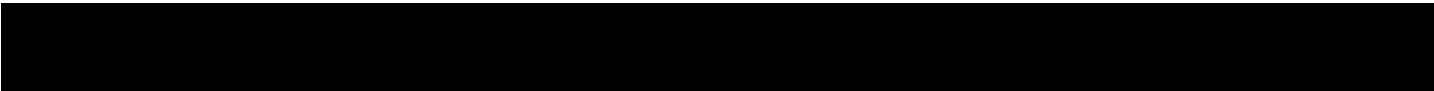
Bedroom One

Bedroom Two

Garden & Parking

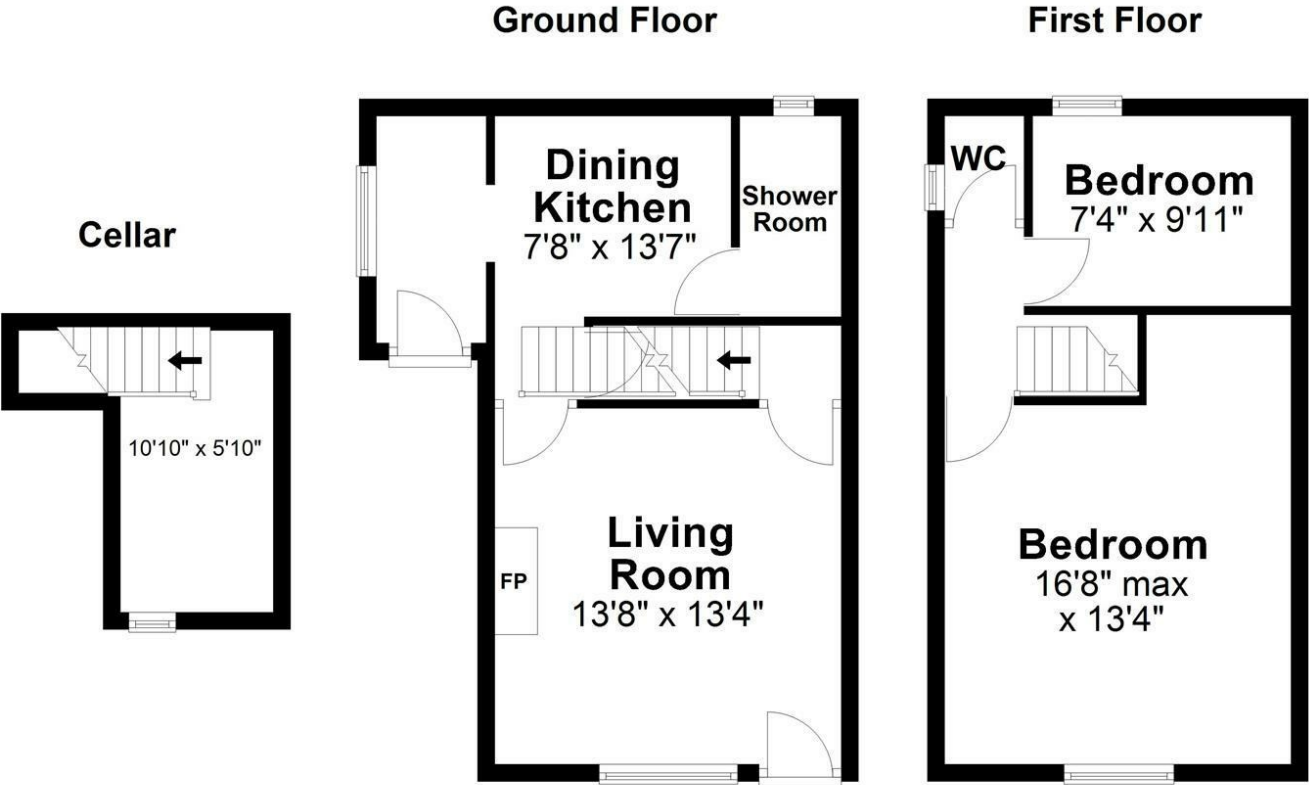


Directions



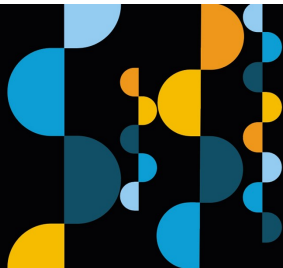
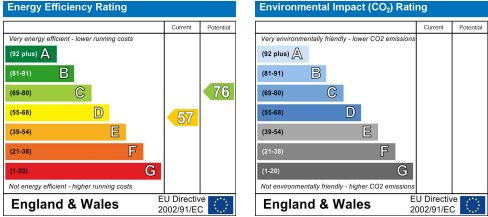


Floor Plan



Total area: approx. 769.7 sq. feet
Kitson Hill Road, Mirfield

These particulars, whilst believed to be accurate are set out as a general outline only for guidance and do not constitute any part of an offer or contract. Intending purchasers should not rely on them as statements of representation of fact, but must satisfy themselves by inspection or otherwise as to their accuracy. No person in this firms employment has the authority to make or give any representation or warranty in respect of the property.



**Estate
agency
done
properly**

**Snow
Gate™**

Holmfirth 26 Victoria Street, West Yorkshire HD9 7DE
All Enquiries: 01484 680800
Mirfield 108 Huddersfield Road, West Yorkshire WF14 8AF
All Enquiries: 01924 497801
snowgate.co.uk