



22 Ebor Gardens , Mirfield, WF14 9BU

A lovely and bright two/three bedroom semi detached dormer bungalow with modern fixtures and fittings throughout and a stunning open plan living/dining kitchen with bi-fold doors to the enclosed rear garden. The property is nicely tucked away and provides flexible accommodation of entrance area, open plan living/dining kitchen with huge island unit and integral appliances. Utility, bathroom and ground floor bedroom or separate lounge. To the first floor are two further king-size bedrooms off the landing. Gardens and off road parking.

£255,000

22 Ebor Gardens

, Mirfield, WF14 9BU



- 2/3 BEDROOM SEMI DETACHED FAMILY HOME
- BEAUTIFUL FULLY FITTED OPEN PLAN LIVING/DINING KITCHEN
- BI-FOLD DOORS TO THE DECKED, PAVED AND LAWNED GARDEN
- FLEXIBLE ACCOMMODATION OVER TWO FLOORS
- PAVED OFF ROAD PARKING
- STUNNING FAR REACHING VIEWS

Entrance

Open plan living/dining kitchen

Utility

Bathroom

Lounge/Ground Floor Bedroom

First Floor Landing

Master Bedroom

Front Bedroom

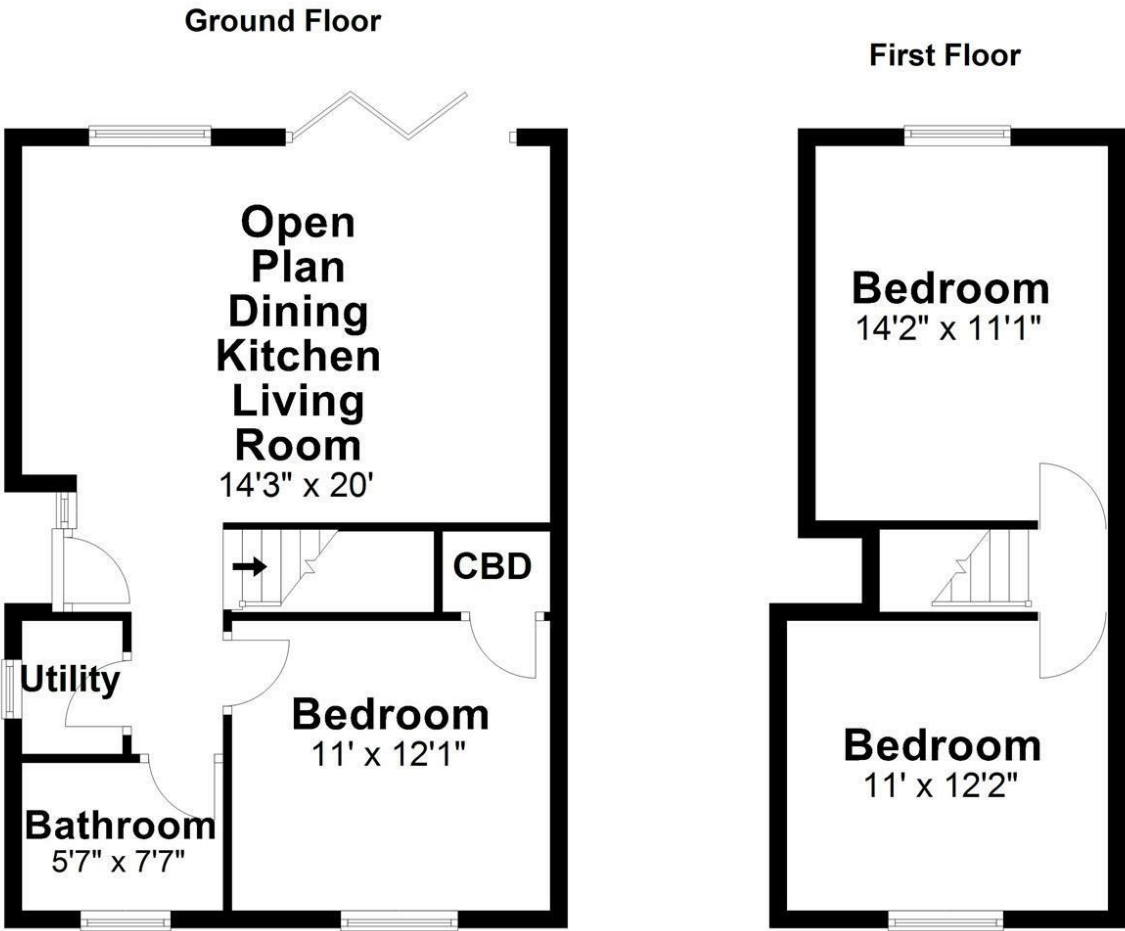
Garden and off road parking



Directions



Floor Plan



Total area: approx. 892.1 sq. feet
Ebor Gardens, Mirfield

These particulars, whilst believed to be accurate are set out as a general outline only for guidance and do not constitute any part of an offer or contract. Intending purchasers should not rely on them as statements of representation of fact, but must satisfy themselves by inspection or otherwise as to their accuracy. No person in this firms employment has the authority to make or give any representation or warranty in respect of the property.

