



53 Water Royd Avenue

Mirfield, WF14 9LU

A three bedroom semi detached family home located in this well regarded residential part of Mirfield, conveniently positioned within walking distance to the centre of town and local amenities including popular schools. Motorway networks and public transport links are also within close proximity. The railway station in the centre of Mirfield connects neighbouring towns and cities including; Huddersfield, Leeds and Manchester, as well as having a direct line to London. This well presented home offers an excellent opportunity for first time buyers and young families. Having an enclosed garden to the rear perfect for sitting out and relaxing, and set to the front is a driveway and single garage.

£260,000

53 Water Royd Avenue

Mirfield, WF14 9LU



- THREE BEDROOM SEMI DETACHED HOUSE
- WITHIN WALKING DISTANCE TO LOCAL AMENITIES INCLUDING POPULAR SCHOOLS
- FAMILY HOME
- GOOD SIZED SOUTH-FACING GARDEN
- WELL REGARDED LOCATION
- DRIVEWAY & GARAGE

Entrance

Living Room

Kitchen

First Floor Landing

Bathroom

Bedroom One

Bedroom Two

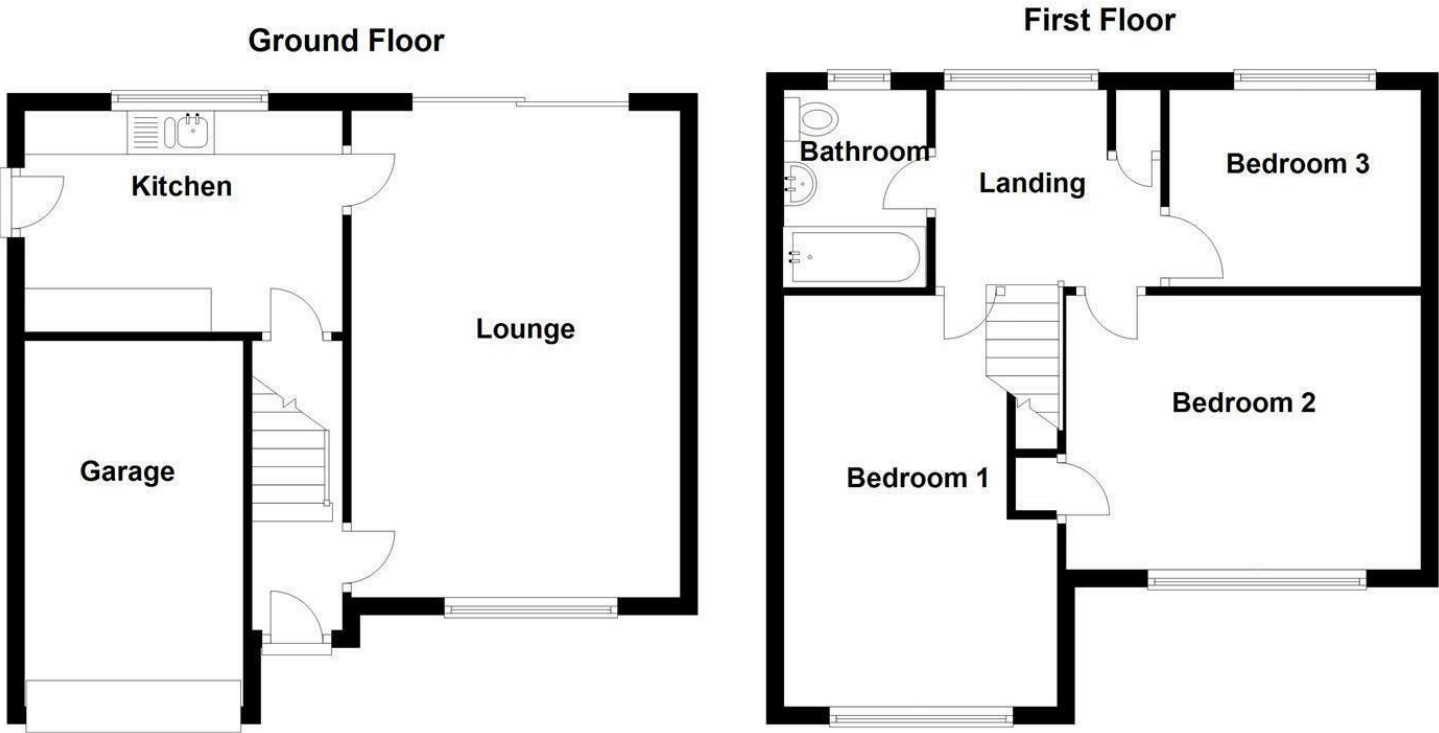
Bedroom Three

Garden, Garage & Driveway





Floor Plan



These particulars, whilst believed to be accurate are set out as a general outline only for guidance and do not constitute any part of an offer or contract. Intending purchasers should not rely on them as statements of representation of fact, but must satisfy themselves by inspection or otherwise as to their accuracy. No person in this firms employment has the authority to make or give any representation or warranty in respect of the property.

