



8 Hopton Hall Lane

Upper Hopton, Mirfield, WF14 8EN

A two double bedroom semi-detached character cottage situated in the heart of Upper Hopton. This highly regarded rural village setting enjoys beautiful surrounds and is perfect for those who love the outdoors with many walks directly from the doorstep, yet only a short distance to the centre of Mirfield and local amenities making this an ideal located for a balance of comfort and convenience. The railway station in the centre of town connects neighbouring towns and cities including; Huddersfield, Leeds and Manchester, as well as having a direct line to London. Motorway networks are also close-by. This stunning home is immaculately presented in a modern and contemporary style, showcasing an abundance of original charm and character. The driveway to the side provides off road parking and set to the rear is a beautiful cottage garden perfect for relaxing with guests.

Offers Over £300,000

8 Hopton Hall Lane

Upper Hopton, Mirfield, WF14 8EN



- TWO DOUBLE BEDROOM SEMI-DETACHED COTTAGE
- IN THE HEART OF THIS POPULAR RURAL VILLAGE
- BEAUTIFULLY PRESENTED SHOWCASING CHARACTER FEATURES
- A SHORT DISTANCE TO THE CENTRE OF MIRFIELD & AMENITIES
- CONVENIENT FOR ACCESS TO THE MOTORWAY
- COTTAGE GARDEN & DRIVEWAY

Entrance

Lounge

Dining Kitchen

First Floor Landing

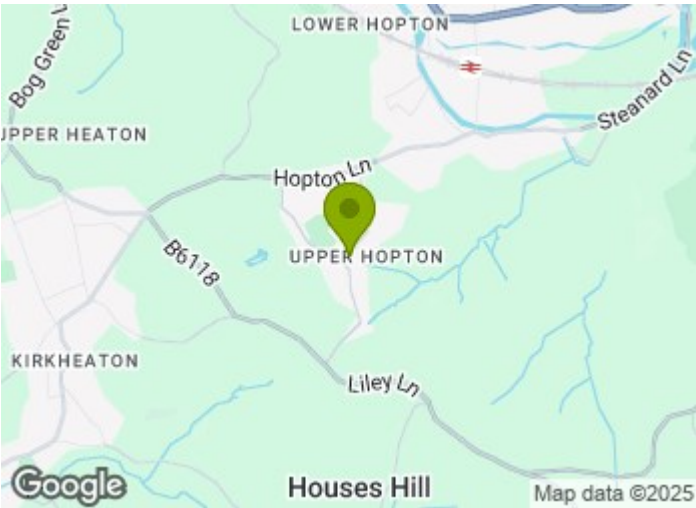
House Bathroom

Master Bedroom

Ensuite

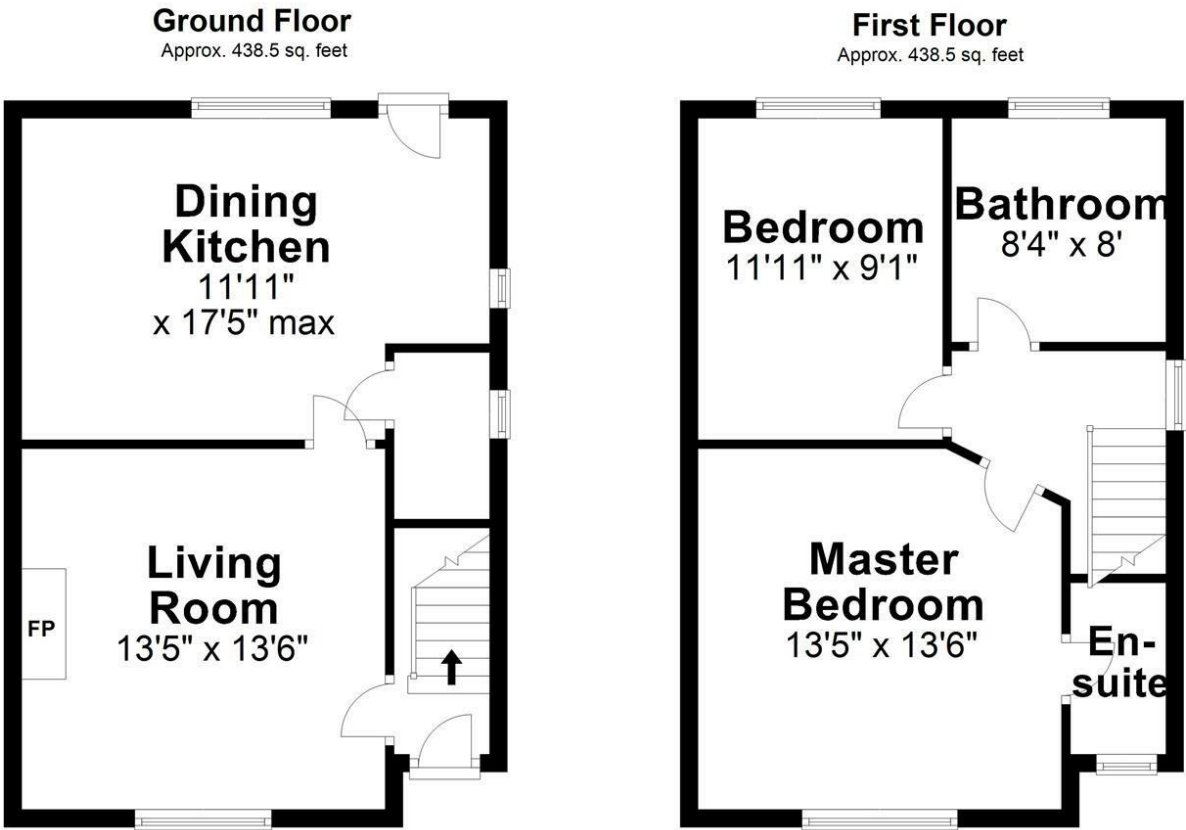
Bedroom Two

Garden & Driveway





Floor Plan



Total area: approx. 877.0 sq. feet

Sketch Plan For Illustrative Purposes Only. All measurements of walls, doors, windows, fittings, and appliances including their sizes and location are shown conventionally and are approximate only. This cannot be regarded as being a representation either by the Seller, his Agent or DY Energy Assessors
Plan produced using PlanUp.

These particulars, whilst believed to be accurate are set out as a general outline only for guidance and do not constitute any part of an offer or contract. Intending purchasers should not rely on them as statements of representation of fact, but must satisfy themselves by inspection or otherwise as to their accuracy. No person in this firms employment has the authority to make or give any representation or warranty in respect of the property.

