



8 Bishops Way

, Mirfield, WF14 0BJ

A four-bedroom link detached property briefly comprising of dining kitchen, lounge, conservatory, three double bedrooms and one single bedroom, together with bathroom and separate shower room. Externally having a rear enclosed garden with decked patio and parking to the front with Garage. Conveniently located for motorway links.

Offers Over £275,000

8 Bishops Way

, Mirfield, WF14 0BJ



- A FOUR-BEDROOM LINKED DETACHED PROPERTY
- CONSERVATORY
- CONVENIENTLY LOCATED FOR COMMUTER LINKS
- REAR GARDEN
- GENEROUS SIZED LOUNGE
- DRIVEWAY AND GARAGE

Dining Kitchen

Lounge

Conservatory

First Floor Landing

Bedroom One

Bedroom Two

Bedroom Three

Bedroom Four

Bathroom

Shower Room

Externally



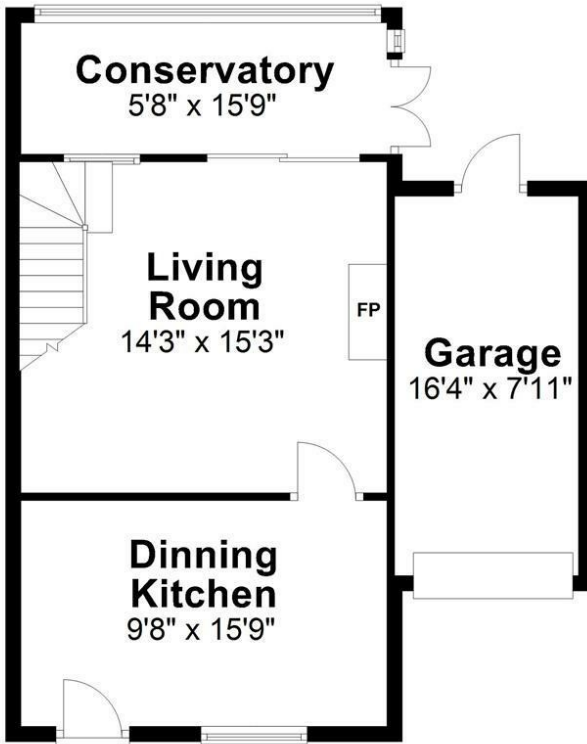
Directions



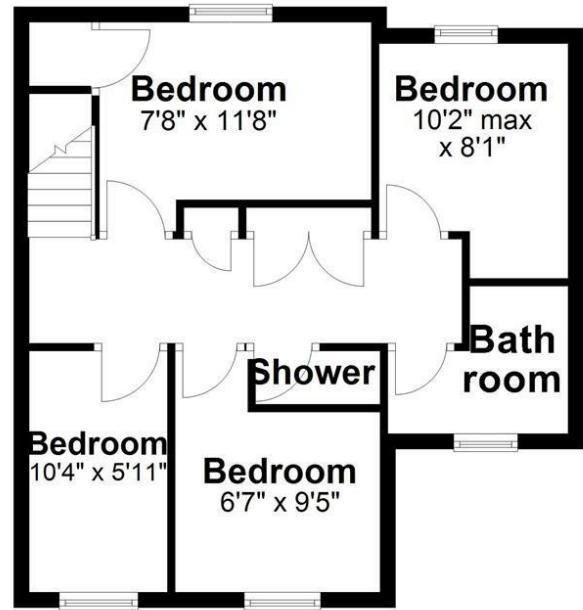


Floor Plan

Ground Floor
Approx. 609.0 sq. feet



First Floor
Approx. 512.5 sq. feet



Total area: approx. 1121.5 sq. feet

Sketch Plan For Illustrative Purposes Only. All measurements of walls, doors, windows, fittings, and appliances including their sizes and location are shown conventionally and are approximate only. This cannot be regarded as being a representation either by the Seller, his Agent or DY Energy Assessors
Plan produced using PlanUp.

Bishops Way, Mirfield

These particulars, whilst believed to be accurate are set out as a general outline only for guidance and do not constitute any part of an offer or contract. Intending purchasers should not rely on them as statements of representation of fact, but must satisfy themselves by inspection or otherwise as to their accuracy. No person in this firm's employment has the authority to make or give any representation or warranty in respect of the property.

