

## Apartment 12 Ellis Court

Textile Street, Dewsbury, WF13 2EX

Welcome to Ellis Court, a charming two-bedroom first-floor apartment located on Textile Street in Dewsbury. This property boasts an open-plan living kitchen, perfect for entertaining guests. Situated within walking distance to the town centre amenities, this apartment offers convenience at your doorstep. Also being within close proximity to public transport links and motorway networks providing handy for those who commute. One of the highlights of this property is the private patio seating area, ideal for enjoying a morning coffee or unwinding in the evening. Also benefits having allocated parking with additional visitor permit spaces available. Whether you're a first-time buyer looking for a cozy home or an investor seeking a rental opportunity, this apartment ticks all the boxes. **NO CHAIN!**

£95,000

# Apartment 12 Ellis Court

Textile Street, Dewsbury, WF13 2EX



- TWO BEDROOM GROUND FLOOR APARTMENT
- WELL PRESENTED THROUGHOUT INCLUDING OPEN PLAN LIVING KITCHEN
- CONVENIENTLY LOCATED CLOSE TO LOCAL TOWN CENTRE AMENITIES, PUBLIC TRANSPORT LINKS & MOTORWAY NETWORKS
- OUTDOOR ENCLOSED PATIO AREA & ALLOCATED PARKING
- COUNCIL TAX BAND A
- NO CHAIN

## Entrance

## Open Plan Living Kitchen

## Bathroom

## Master Bedroom

## Ensuite

## Bedroom Two

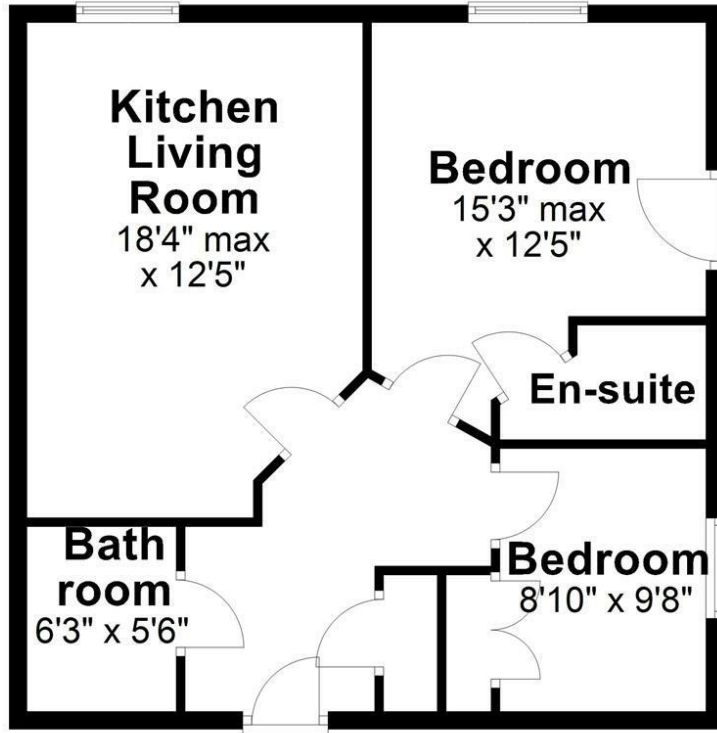
## Parking





# Floor Plan

## Ground Floor

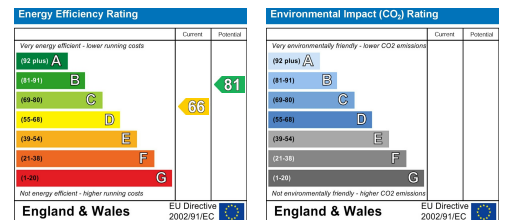


Total area: approx. 633.9 sq. feet

Sketch Plan For Illustrative Purposes Only. All measurements of walls, doors, windows, fittings, and appliances including their sizes and location are shown conventionally and are approximate only. This cannot be regarded as being a representation either by the Seller, his Agent or DY Energy Assessors  
Plan produced using PlanUp.

**Apt 12, Ellis Court, Textile Street, Dewsbury**

These particulars, whilst believed to be accurate are set out as a general outline only for guidance and do not constitute any part of an offer or contract. Intending purchasers should not rely on them as statements of representation of fact, but must satisfy themselves by inspection or otherwise as to their accuracy. No person in this firm's employment has the authority to make or give any representation or warranty in respect of the property.



**Estate  
agency  
done  
properly**

**Snow  
Gate™**

**Holmfirth** 26 Victoria Street, West Yorkshire HD9 7DE  
All Enquiries: 01484 680800

**Mirfield** 108 Huddersfield Road, West Yorkshire WF14 8AF  
All Enquiries: 01924 497801

[snowgate.co.uk](http://snowgate.co.uk)