



## 67 Spring Place Court

Mirfield, WF14 0QZ

A four bedroom townhouse set over three floor offering spacious and flexible accommodation ideal for a growing family. Conveniently positioned within close proximity to local amenities and a short drive to the centre of Mirfield. The railway station in the town centre connects neighbouring towns and cities including; Huddersfield, Manchester and Leeds, as well as having a direct line to London. Motorway networks are also within close proximity. The driveway to the front provides off road parking for a couple of vehicles and leads up to the single garage store which has partially been converted to create a study/treatment room which is accessed off the dining kitchen. The enclosed garden to the rear provides an excellent space to sit out and relax!

£230,000

# 67 Spring Place Court

Mirfield, WF14 0QZ



- FOUR BEDROOM TOWNHOUSE
- SET OVER THREE FLOORS OFFERING FLEXIBLE & SPACIOUS ACCOMMODATION
- GOOD SIZED FAMILY HOME
- CONVENIENTLY LOCATED CLOSE TO LOCAL AMENITIES & MOTORWAY NETWORKS
- ENCLOSED REAR GARDEN
- DRIVEWAY PROVIDES OFF ROAD PARKING

**Entrance**

**WC**

**Study**

**Dining Kitchen**

**First Floor Landing**

**Lounge**

**Bedroom Two**

**Ensuite**

**Second Floor Landing**

**House Bathroom**

**Master Bedroom**

**Ensuite**

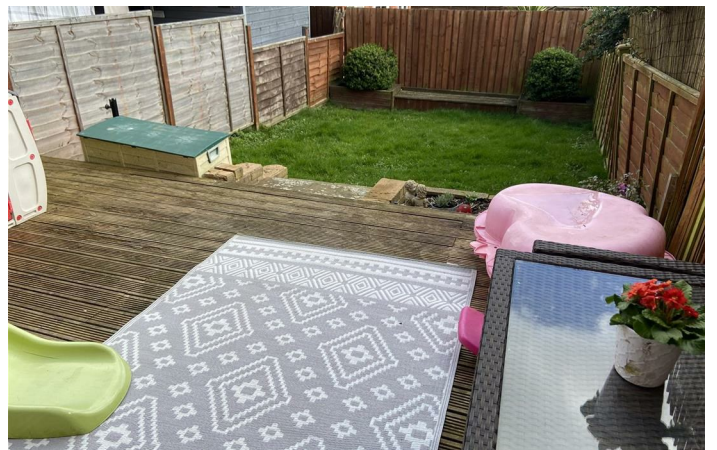
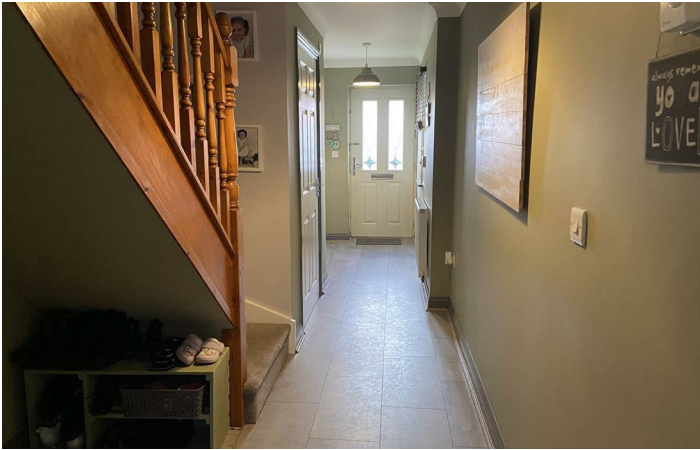
**Bedroom Three**

**Bedroom Four**

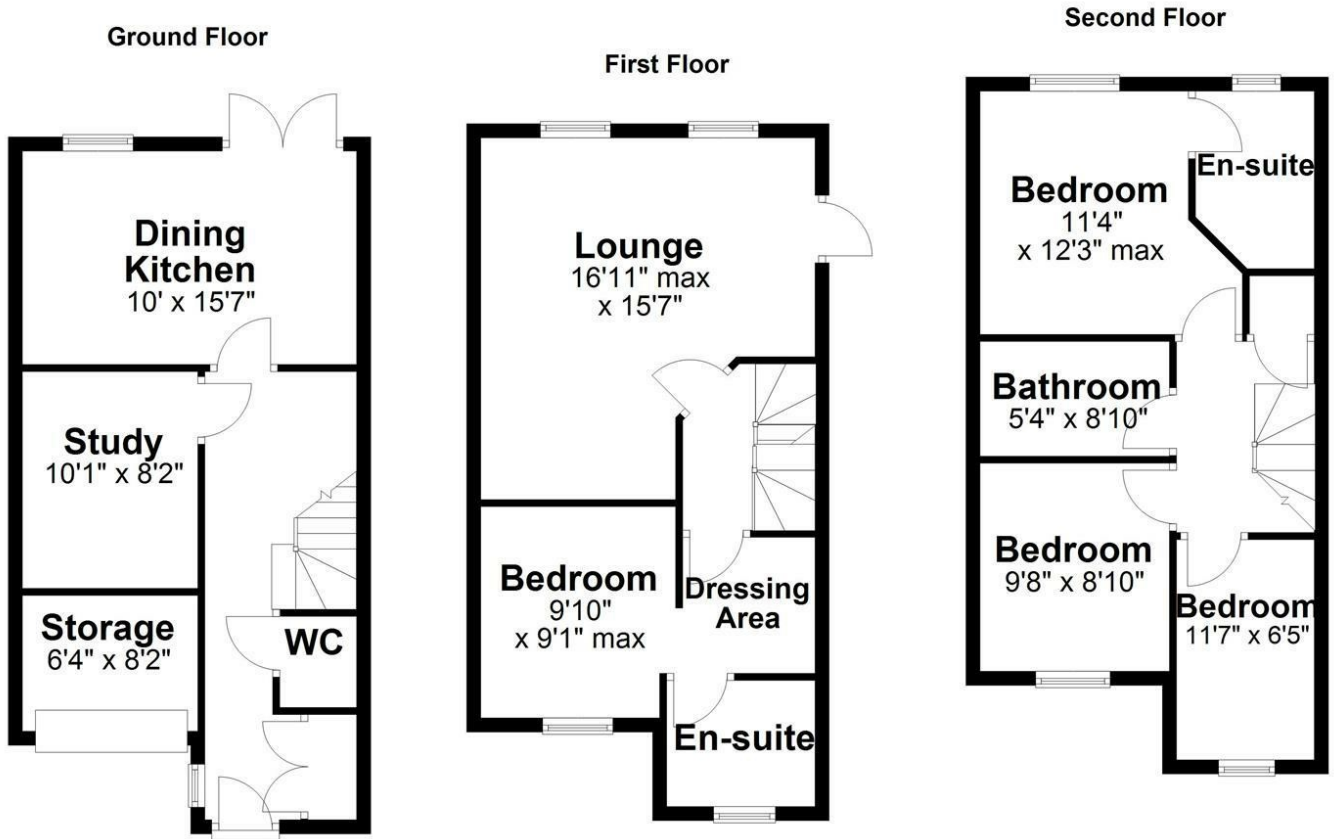
**Garden, Drive & Garage/Store**







# Floor Plan

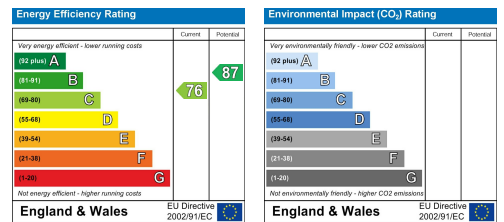


Total area: approx. 1351.9 sq. feet

Sketch Plan For Illustrative Purposes Only. All measurements of walls, doors, windows, fittings, and appliances including their sizes and location are shown conventionally and are approximate only. This cannot be regarded as being a representation either by the Seller, his Agent or DY Energy Assessors Plan produced using PlanUp.

## Spring Place Court, Mirfield

These particulars, whilst believed to be accurate are set out as a general outline only for guidance and do not constitute any part of an offer or contract. Intending purchasers should not rely on them as statements of representation of fact, but must satisfy themselves by inspection or otherwise as to their accuracy. No person in this firm's employment has the authority to make or give any representation or warranty in respect of the property.



**Estate agency done properly**

**Snow Gate**<sup>TM</sup>

**Holmfirth** 26 Victoria Street, West Yorkshire HD9 7DE  
All Enquiries: 01484 680800

**Mirfield** 108 Huddersfield Road, West Yorkshire WF14 8AF  
All Enquiries: 01924 497801

snowgate.co.uk