



27 Kiln Avenue

, Mirfield, WF14 0HU

A one double bedroom ground floor apartment conveniently located close to local amenities and a short distance from the centre of Mirfield. Close to motorway networks and the railway station in the centre of town connects neighbouring towns and cities including; Huddersfield, Leeds and Manchester as well as having a direct line to London. Having the benefit of an allocated parking space and communal gardens to be enjoyed by residents.

£525 Per Month

27 Kiln Avenue

, Mirfield, WF14 0HU



- GROUND FLOOR APARTMENT
- ONE DOUBLE BEDROOM
- LARGE LIVING ROOM WITH PATIO DOORS TO REAR
- CLOSE TO LOCAL AMENITIES
- ALLOCATED PARKING SPACE & COMMUNAL GARDENS
- AVAILABLE NOW

Entrance

Lounge/Dining Room

20'5 x 10'10 (max) (6.22m x 3.30m (max))

Kitchen

8'4 x 7'7 (max) (2.54m x 2.31m (max))

Bedroom

11'4 x 10'11 (3.45m x 3.33m)

Bathroom

7'7 x 5'10 (2.31m x 1.78m)

Relevant Letting Fees



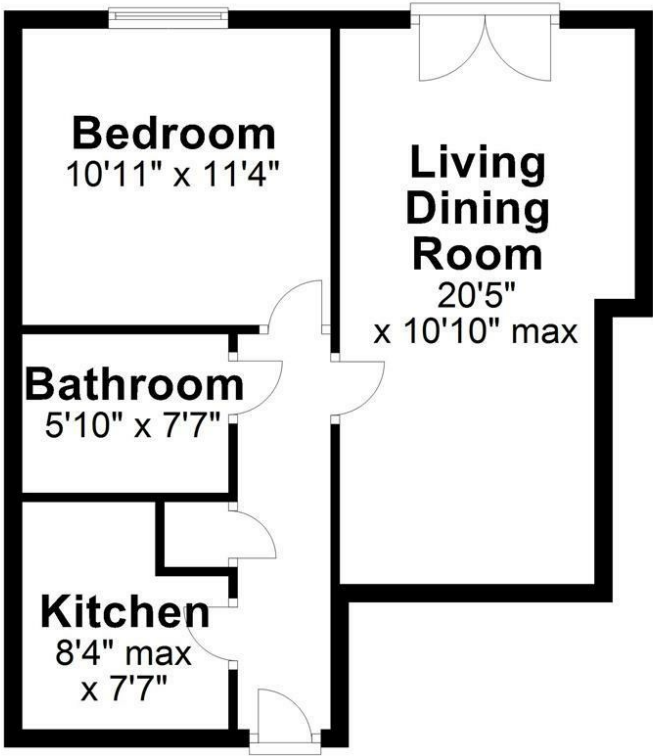
Directions

From Mirfield centre, proceed up Knowl Road, through Water Royd Lane onto Old Bank Road, turn left onto Taylor Hall Lane, proceed up to the mini roundabout and the development is on the right hand side.



Floor Plan

Ground Floor
Approx. 503.3 sq. feet



Total area: approx. 503.3 sq. feet

Sketch Plan For Illustrative Purposes Only. All measurements of walls, doors, windows, fittings, and appliances including their sizes and location are shown conventionally and are approximate only. This cannot be regarded as being a representation either by the Seller, his Agent or DY Energy Assessors
Plan produced using PlanUp.

Kiln Avenue, Mirfield

These particulars, whilst believed to be accurate are set out as a general outline only for guidance and do not constitute any part of an offer or contract. Intending purchasers should not rely on them as statements of representation of fact, but must satisfy themselves by inspection or otherwise as to their accuracy. No person in this firms employment has the authority to make or give any representation or warranty in respect of the property.

