



Knaphill

£399,950 Leasehold

A luxury two double bedroom apartment situated in the superb Victorian character building Florence Court. Renown as one of Woking's most sought after developments.

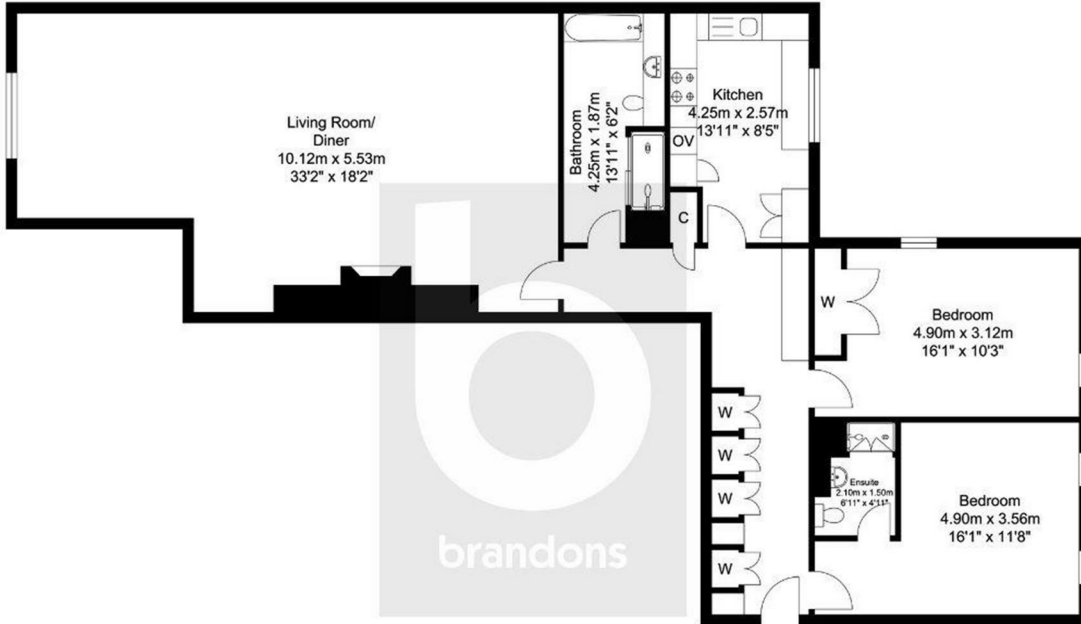
A secure entry phone system allows access to the building into well-kept communal hallways with lift access to all floors.

This lovely two double bedroom first floor apartment has been well maintained and offers substantial living space, its large windows create a light and airy feel throughout the accommodation. There is a spacious living room and dining room with a gas fireplace and stone surround, a traditional style fitted kitchen with integrated appliances., the principle bedroom has en-suite and the entrance hall has bespoke fitted cupboards that provide the ever needed storage space.

Florence Court has a private gated entrance, beautifully maintained gardens and this apartment has two allocated parking spaces.

Moments from local village amenities, transport connections to Woking town centre and close proximity to Brookwood station, we highly recommend a viewing.

Council Tax Band F



Total Approximate Area
1284.35 sq. ft.
(119.32 sq. m)

brandons residential estate agents have not tested any apparatus, equipment, fixtures or services so cannot verify they are in working order or fit-for-purpose. The buyer is advised to obtain verification from their solicitor or surveyor.

To arrange a viewing please contact brandons residential estate agents on 01483 798840 or email sales@brandonsmove.co.uk

