

SPENCE WILLARD



Little Pax, 30 Castle Close, Ventnor, Isle of Wight

A period cottage set in wooded grounds of around 9 acres with southerly sea views and a range of outbuildings

VIEWING:

COWES@SPENCEWILLARD.CO.UK

01983 200880

WWW.SPENCEWILLARD.CO.UK



A rare opportunity to acquire a historic cottage within an elevated south facing setting with distant sea views, bordered by nearly 8 acres of mature woodland. The house was erected by The Hon Hans Stanley when he was Governor of the Isle of Wight in the 1700's as his "summer house". The cottage was designed to make the most of the southerly sea views and retains a wide range of period features and has been well maintained and modernised in recent years. Within the woodland are a range of useful outbuildings and stores whilst the woodland provides a wonderful secluded setting.

Situated within the western fringe of the coastal town of Ventnor, Steephill Cove is nearby as are the Ventnor Botanical Gardens whilst the town itself has beachside eateries, a good range of shops and restaurants.

ACCOMMODATION

ENTRANCE HALL A spacious dual aspect room featuring an arched doorway and a pair of arched leaded light windows providing sea views. Tiled flooring and staircase to first floor. Store cupboard and cupboard housing gas-fired boiler.

SITTING ROOM An impressive room with a high curved ceiling with a pair of arched doors leading to the front elevation and providing sea views with a leaded light window above. In addition, there is a bay window with window seat to the western elevation. Woodburning stove set on a stone hearth with exposed stonework above.

KITCHEN/BREAKFAST ROOM Fitted with a good range of base and wall cupboards with worksurfaces. Stainless steel sink unit, integral Neff double oven and 4 ring hob. Space for fridge, slimline dishwasher and washing machine. Tiled flooring extends into the dining area with an outlook of the garden and view over the English Channel.

REAR LOBBY with door to garden.

CLOAKROOM WC and wash basin.





FIRST FLOOR LANDING

BEDROOM 1 A dual aspect double bedroom with spectacular panoramic views over the English Channel. Built-in cupboards.

BEDROOM 2 A double bedroom with superb sea views and built-in cupboards.

BEDROOM 3 A dual aspect double bedroom with built-in cupboards and an outlook to the rear as well as sea glimpses to the east.

SHOWER ROOM Modernised in recent years and tiled throughout with a large shower, wash basin with a range of built-in cupboards beneath, WC and bidet. Heated towel rail.

OUTSIDE

A gated access to a track that leads through woodland to the cottage where there is parking. The driveway continues towards the outbuildings. A large **TERRACE** adjoins the western elevation of the cottage and the garden extends to the east. Steps to either side of the cottage lead up to a level lawned garden bordered by mature trees from which there are also panoramic sea views. Situated within approximately 9 acres much of the property comprises mature woodland on the sloping partly terraced land to the north of Castle Close as shown on the plan. Situated around 60 m to the west of the cottage are the range of outbuildings comprising:

SHED

TIMBER GARAGE (5.5 x 5.7m) Water tap.

DOUBLE GARAGE (5.5 x 5.4m) With up and over door and concrete floor, power.

OPEN FRONTED BARN (6.5 x 5.55m)

TIMBER FRAMED BARN (14.2 x 6.6m)

The woodland comprises a wide array of principally mature broadleaf trees making for a delightful natural setting and a haven for wildlife. There are various interesting rock formations and cliffs within these enchanting grounds. The woodland is subject to a Tree Preservation Order.

SERVICES Mains water, drainage, electricity and gas. Gas fired boiler serving central heating.

POSTCODE PO38 1UD

COUNCIL TAX Band F

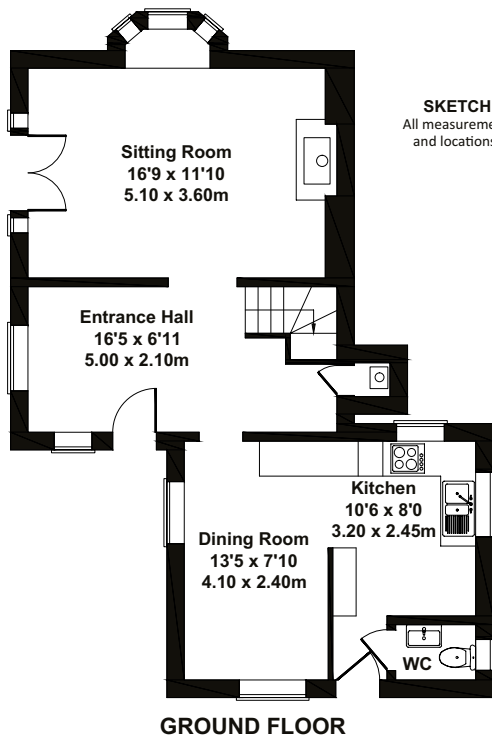
EPC Rating E

TENURE Freehold

VIEWING All viewings will be strictly by prior arrangement with the sole selling agents, Spence Willard.



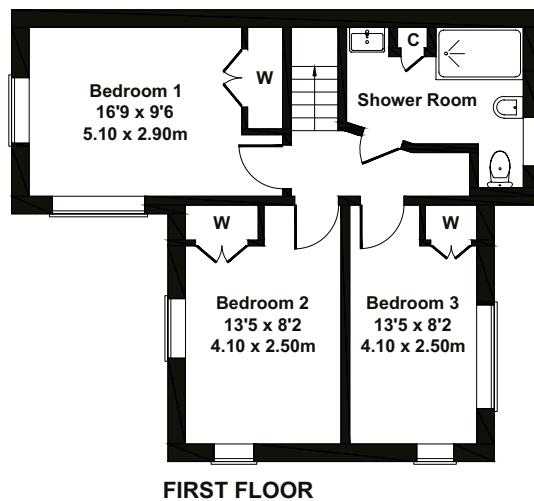




Little Pax

Approximate Gross Internal Area
1087 sq ft - 101 sq m

SKETCH PLAN FOR ILLUSTRATIVE PURPOSES ONLY
All measurements walls, doors, windows, fittings and appliances, their sizes and locations, are approximate only. They cannot be regarded as being a representation by the seller, nor their agent.
Produced by Potterplans Ltd. 2023



SPENCEWILLARD.CO.UK

IMPORTANT NOTICE: 1. Particulars: These particulars are not an offer or contract, nor part of one. You should not rely on statements by Spence Willard in the particulars or by word of mouth or in writing ('information') as being factually accurate about the property, its condition or its value. Neither Spence Willard nor any joint agent has any authority to make any representations about the property, and accordingly any information given is entirely without responsibility on the part of the agents, seller(s) or lessor(s). 2. Photos etc: The photographs show only certain parts of the property as they appeared at the time they were taken. Areas, measurements and distances given are approximate only. 3. Regulations etc: Any reference to alterations to, or use of, any part of the property does not mean that any necessary planning, building regulations or other consent has been obtained. A buyer or lessee must find out by inspection or in other ways that these matters have been properly dealt with and that all information is correct. 4. VAT: The VAT position relating to the property may change without notice.