



Peter  
Buswell  
Independent Family Estate Agents



# No Onward Chain in Sissinghurst

£795,000

🛏️ 4 🚿 2 🛋️ 2





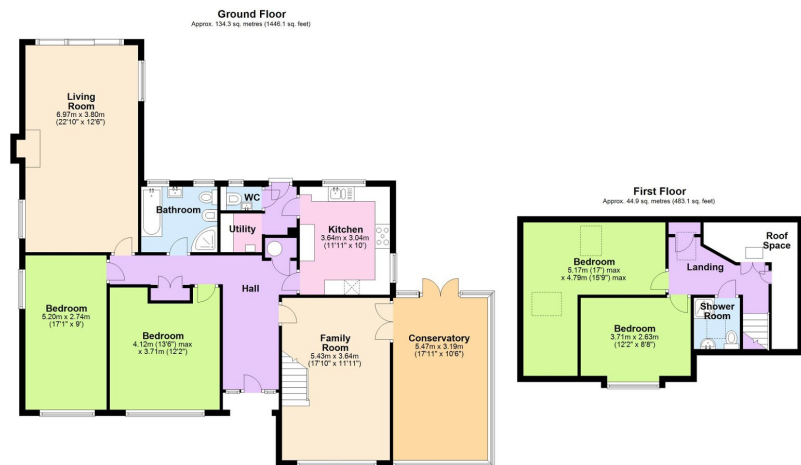
## Description

A detached four bedroom family home sitting on approximately 1/3 of an acre with beautiful secluded gardens to the rear. The generous ground floor accommodation is beautifully presented with two bedrooms and two further bedrooms on the first floor. A driveway to the front provided ample parking. CSCA

## Location

Sissinghurst is a small village in the county of Kent, situated with Cranbrook to the south, Goudhurst to the west, Tenterden to the east and Staplehurst to the north. Originally called Mylkehouse, Sissinghurst changed its name in the 1850s. The village shares its history with that of the nearby Wealden town of Cranbrook, having strong evidence of cloth and iron ore manufacturing activities. Sissinghurst is most famous for its Castle and the magnificent gardens created in the 1930s by Vita Sackville-West, poet and gardening writer, and her husband Harold Nicolson, author and diplomat. The Street runs through the centre of the village and is where the village pub, The Milkhouse, can be found as well as the acclaimed Rankins restaurant, a tandoori restaurant, a general store and the village hall. Sissinghurst's parish church is the Anglican Trinity Church, built in 1838. The Sissinghurst Church of England Primary School is dedicated to providing an education of the highest quality.





Total area: approx. 179.2 sq. metres (1929.2 sq. feet)

- DETACHED FOUR BEDROOM CHALET BUNGALOW
- APPROXIMATELY 1/3 ACRE PLOT
- BEAUTIFUL SECLUDED GARDEN TO THE REAR
- A STYLISH FULLY FITTED KITCHEN WITH A SEPARATE UTILITY ROOM
- TWO VERY GENEROUS SIZED RECEPTION ROOMS
- TWO BEDROOMS AND BATHROOM ON THE GROUND FLOOR
- FRONT GARDEN & DRIVEWAY PROVIDING PARKING FOR SEVERAL VEHICLES
- CRANBROOK SCHOOL CATCHMENT AREA
- COUNCIL TAX BAND E



Score	Energy rating	Current	Potential
92+	A		
81-91	B		
69-80	C		79 C
55-68	D	63 D	
39-54	E		
21-38	F		
1-20	G		