



Peter  
Buswell  
Independent Family Estate Agents

# A Luxury Apartment In Burwash

Guide Price £225,000

🛏️ 2 🪑 2 🚗 0



Set in the peaceful countryside of Burwash, this first-floor two bedroom apartment offers a tranquil escape with modern day comforts, beautiful scenic views and well maintained communal gardens.

The open-plan living space benefits from natural light, with windows framing a south-facing view. The contemporary kitchen adds a stylish touch, while access to the communal areas provides a sense of community within the development. The kitchen is well-equipped for cooking, with modern appliances and sleek countertops. The spacious living area is perfect for relaxing or entertaining.

Both bedrooms provide a comfortable retreat for rest and relaxation. The master bedroom overlooks the gardens, while the second bedroom is equally inviting. Both rooms offer ample storage space and are tastefully decorated. With both a shower room and a bathroom, convenience is ensured.

The communal area is just steps away, offering opportunities for al fresco dining or enjoying a morning coffee in the gardens.

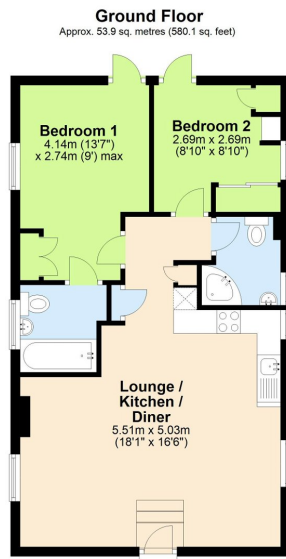
### **If You Were to Live Here:**

Imagine waking up to the sounds of birds chirping and leaves rustling outside your window. Start your day with a leisurely walk through the communal gardens, taking in the beauty of the surrounding countryside. The communal amenities provide opportunities for relaxation and exercise. Take a dip in the swimming pool, work out in the gym, or enjoy a game of tennis on the court.

Parking is straightforward with spaces available, making life easier for residents and visitors. Despite its rural location, the mainline train station in the neighbouring village offers easy access to nearby towns and cities, making commuting a breeze. With no onward chain, moving in is hassle-free, allowing you to settle in and enjoy the relaxed lifestyle this apartment offers.

Whether you're seeking solitude or a sense of community, this apartment offers the best of both worlds. Make this apartment your home in the heart of the countryside.





Total area: approx. 53.9 sq. metres (580.1 sq. feet)

- GUIDE PRICE £225,000  
£250,000
- RURAL LOCATION
- AVAILABLE WITH NO  
ONWARD CHAIN
- HEATED INDOOR SWIMMING  
POOL
- EPC RATING F
- TWO DOUBLE BEDROOM  
FIRST FLOOR APARTMENT
- BEAUTIFUL COMMUNAL  
GARDENS
- TENNIS COURTS
- GYM AND SNOOKER ROOM
- COUNCIL TAX BAND C



Score	Energy rating	Current	Potential
92+	A		
81-91	B		
69-80	C		76 C
55-68	D		
39-54	E		
21-38	F	24 F	
1-20	G		