



Peter
Buswell
Independent Family Estate Agents

Ideally Located to Hawkhurst Village

Guide Price £290,000

🛏️ 2 🚿 1 🚻 1



Guide Price £290,000 to £300,000-Nestled within a vibrant community, this charming Victorian end-of-terrace property offers a harmonious blend of classic charm and modern comforts spread across three inviting floors. Situated in the heart of the sought-after village of Hawkhurst, residents enjoy convenient access to local shops and amenities, while families will appreciate its proximity to the prestigious Cranbrook School catchment area.

As you step inside, you're greeted by a warm and welcoming atmosphere that permeates throughout the home. The ground floor boasts a thoughtfully designed kitchen equipped with underfloor heating, providing a cosy environment. The kitchen's stable door seamlessly connects the indoor living space to the expansive 70 ft west-facing rear garden. This outdoor haven bathes in sunlight throughout the day, making it an ideal spot for alfresco dining, gardening, or simply unwinding.

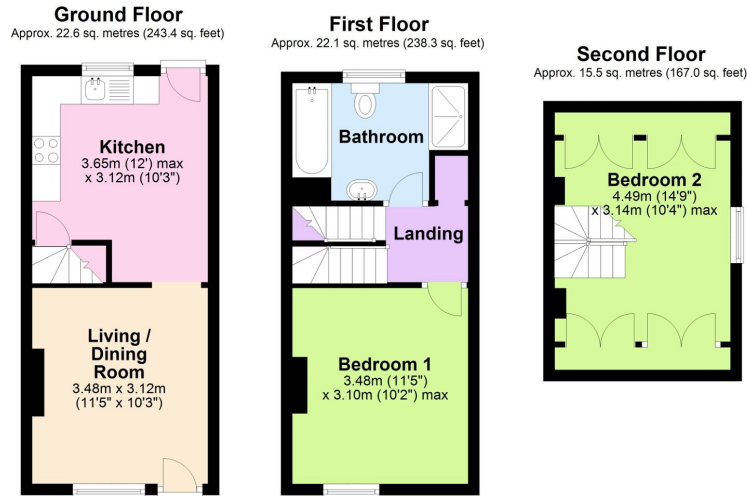
The adjacent living room serves as a comfortable retreat, enhanced by the ambiance of a fireplace housing a wood-burning stove. It's the perfect setting for cosy evenings spent relaxing with loved ones or indulging in a good book.

Ascending to the upper floors, you'll find a stylish four-piece bathroom suite that exudes luxury and functionality. Complete with a sumptuous bath and a sleek walk-in shower cubicle, this space offers a spa-like sanctuary where you can unwind and rejuvenate after a long day.

Throughout the home, period features blend seamlessly with modern conveniences, creating an inviting ambiance that is both timeless and elegant, its architectural charm and character are evident in every corner.

In summary, this Victorian gem presents a rare opportunity to experience village living at its finest. Whether you're drawn to its convenient location, spacious garden, or stylish interiors, this property offers a special place to call home. With its unbeatable combination of comfort, convenience, and character, it's sure to capture the hearts of those seeking a quintessential village lifestyle.





Total area: approx. 60.3 sq. metres (648.7 sq. feet)

- GUIDE PRICE £290,000 TO £300,000
- POPULAR RESIDENTIAL LOCATION WITHIN REACH OF LOCAL SHOPS
- KITCHEN WITH UNDER FLOOR HEATING AND STABLE DOOR OUT TO THE REAR GARDEN
- EPC RATING D
- A TWO DOUBLE BEDROOM END OF TERRACE CHARACTER COTTAGE
- LIVING ROOM WITH FIREPLACE HOUSING A WOOD BURNING STOVE
- A STYLISH FOUR PIECE BATHROOM SUITE WITH BATH AND WALK IN SHOWER AND GLAZED DOUBLE GLAZED WINDOWS
- COUNCIL TAX BAND C



Score	Energy rating	Current	Potential
92+	A		
81-91	B		88 B
69-80	C		
55-68	D	55 D	
39-54	E		
21-38	F		
1-20	G		