



Peter
Buswell
Independent Family Estate Agents

No Onward Chain in Burwash

Guide Price £300,000

3 1 1



Guide Price £300,000 to £325,000 - Escape to the serene countryside setting of Burwash village with this charming 3-bedroom semi-detached chalet bungalow. This property offers beautiful countryside views to enjoy from the comfort of home.

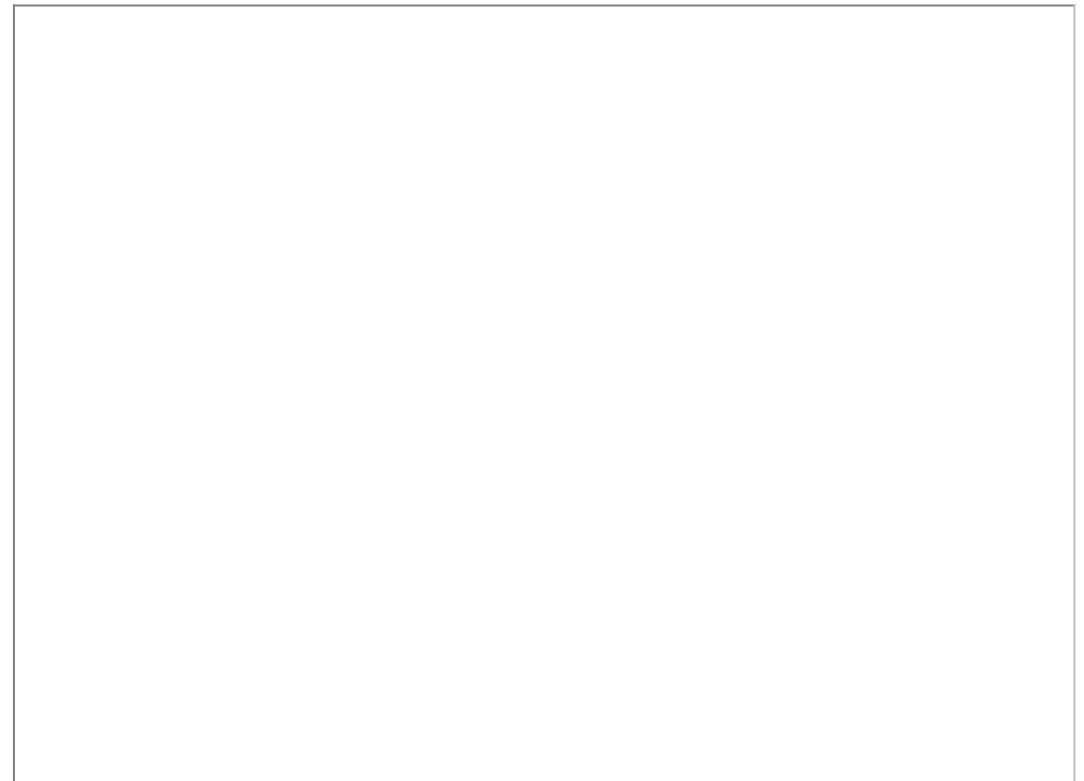
Step inside this delightful property to discover a versatile layout that welcomes your personal touch. With 1188 square feet of living space, there's plenty of room to adapt and customize according to your preferences. Whether you're dreaming of an open-concept design or prefer defined living areas, this home provides the canvas for your vision.

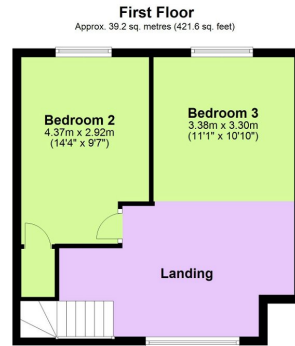
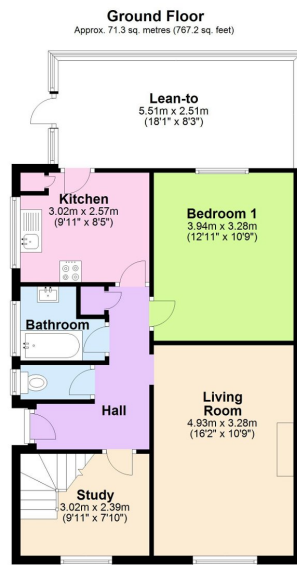
Outside, a sunny garden awaits, offering a tranquil space to relax and unwind. Spend sunny afternoons soaking up the peaceful ambiance or tending to your own little slice of nature. A convenient garage provides secure parking or additional storage, adding practicality to this countryside escape.

With a bit of TLC, you can transform this home into a cosy retreat tailored to your taste. Embrace the charm of village living while adding your own contemporary touches to create a space that feels uniquely yours.

Enjoy leisurely walks through the village or explore nearby nature trails, immersing yourself in the beauty of your surroundings. With a population of just over 2,500, the Parish of Burwash lies 42 miles southeast of central London, and 15 miles north of Hastings and Bexhill. Despite its proximity to these bustling areas, Burwash maintains its quaint charm and tranquil atmosphere, making it an ideal escape from the hustle and bustle of city life. Burwash itself is perhaps best known for its association with Rudyard Kipling, the esteemed author of "The Jungle Book" and other literary classics, who resided at Bateman's, a handsome ironmasters house less than half a mile from the village, now one of the National Trust's most popular visitor attractions in southern England. Living in Burwash offers a unique opportunity to immerse yourself in the rich history and cultural heritage of this renowned literary figure.

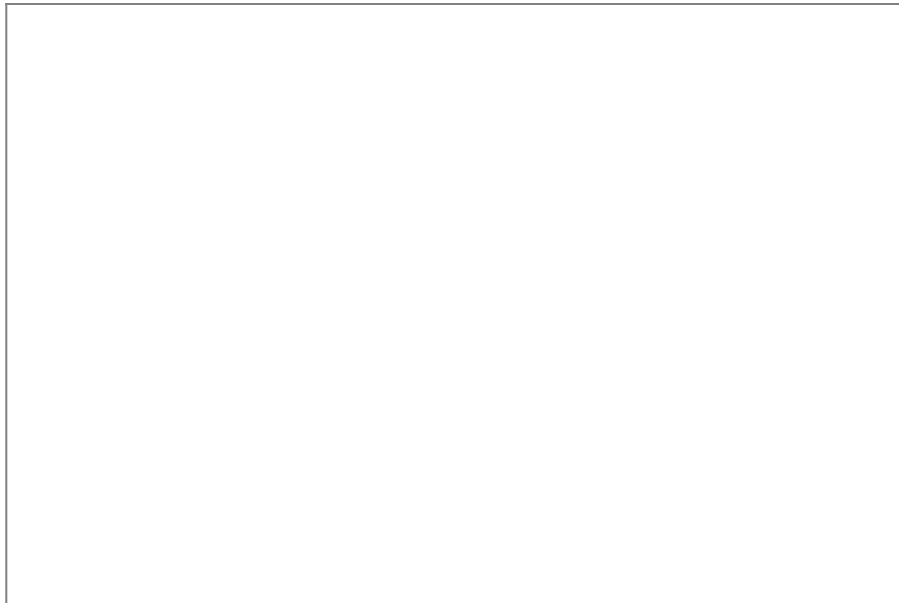
Schedule a viewing today and discover the potential of this charming property.





Total area: approx. 110.5 sq. metres (1188.9 sq. feet)

- GUIDE PRICE £300,000 TO £325,000
- COUNTRYSIDE VIEWS
- 1188 SQUARE FEET
- SUNNY REAR GARDEN
- EPC RATING D
- THREE BEDROOM SEMI-DETACHED HOME
- VERSATILE ACCOMMODATION
- POTENTIAL TO REFURBISH
- QUIET LOCATION
- COUNCIL TAX BAND C



Score	Energy rating	Current	Potential
92+	A		100 A
81-91	B		
69-80	C		
55-68	D	64 D	
39-54	E		
21-38	F		
1-20	G		