

DIRECT



MOVES



Castlemaine Road

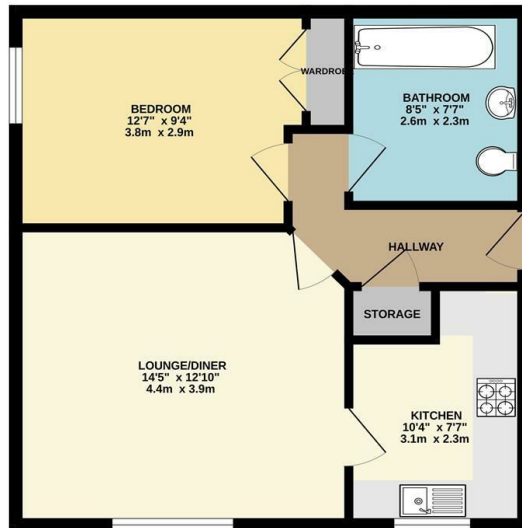
, Weymouth DT3 6RQ

- Ground floor
- One double bedroom
- Kitchen
- Spacious lounge/diner
- Bathroom
- Private residents parking
- Easy access to both Weymouth and Dorchester
- Presented to a high standard throughout

Offers Over £130,000 Leasehold

Local Authority
Council Tax Band A
EPC Rating

GROUND FLOOR



Whilst every attempt has been made to ensure the accuracy of the description contained herein, measurements of doors, windows, rooms and any other items are approximate and no responsibility is taken for any error, omission or misstatement. This plan is for illustrative purposes only and should be used as such by any prospective purchaser. The contents, systems and appliances shown have not been tested and no guarantee is given as to their operability or efficiency can be given.
Made with floorplan ©2010

Direct Moves Estate Agents Office

9 Westham Road
Dorset
Weymouth
DT4 8NP

Contact

01305 778500
sales@directmoves.com
<https://directmoves.com/>

Agents Note: Whilst every care has been taken to prepare these particulars, they are for guidance purposes only. All measurements are approximate and for general guidance purposes only and whilst every care has been taken to ensure accuracy, they should not be relied upon and potential buyers/tenants are advised to recheck the measurements.

