



Broadway Close

, Weymouth DT3 5PH

- Generously proportioned double bedroom
 - Regular public transport links
 - Close to coast & countryside walks
 - Well-maintained communal grounds
 - New 125 year lease
- First floor apartment
 - Requires modernisation throughout
 - Popular residential neighbourhood
 - Large internal storage room
 - Service charge £830 per annum

£90,000 Leasehold





Exterior

A communal parking area is situated to the front of the property. Concrete steps lead through the frontage, laid to lawn, to an obscured double-glazed communal entrance door.

Communal Hallway

The communal hallway features a double-glazed rear aspect window and a double-glazed door opening onto the rear communal gardens. Stairs rise to the first floor, where the flat entrance is accessed via an obscured UPVC door.

Entrance Hall

The entrance hall includes two storage cupboards and access to a large storage room housing the meters and combination boiler. There is also a radiator and doors leading to the main rooms.

Living Room

(14'9" x 10'5")

A bright living room with large double-glazed windows overlooking the communal gardens, a wall-mounted radiator, and a connecting door to the kitchen.

Kitchen

(10'5" x 8'10")

A partially tiled, front-aspect kitchen fitted with a range of eye and base-level units, a double-glazed window, stainless steel sink, and mixer taps.

Bedroom

(12'9" x 11'1")

A generously proportioned, rear-aspect double bedroom featuring a large double-glazed window overlooking the communal gardens and a wall-mounted radiator.

Bathroom

(6'10" x 5'6")

A front-aspect bathroom fitted with an obscured double-glazed window, low-level WC, hand wash basin with stainless steel mixer taps, and a wall-to-wall bathtub.

Communal Gardens

To the rear, residents benefit from a spacious communal garden, mainly laid to lawn with mature trees and shrubbery providing a pleasant, private outdoor area.

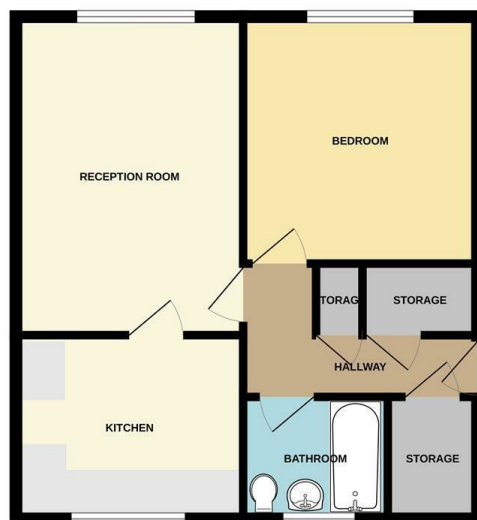
Disclaimer

Direct Moves Estate Agents make no representations or warranties regarding the accuracy, completeness, or reliability of the property details provided. These details are for informational purposes only and should not be relied upon in any way. The information is not intended to form part of any contract and does not constitute an offer or guarantee by Direct Moves.



Local Authority
Council Tax Band **A**
EPC Rating **C**

GROUND FLOOR



Whilst every attempt has been made to ensure the accuracy of the floorplan contained here, measurements of rooms, outdoor areas and any other items are approximate and no responsibility is taken for any error, omission or misstatement. This plan is for illustrative purposes only and should be used as such for any prospective purchase. The services, systems and appliances shown have not been tested and no guarantee is given to their operation or efficiency under any circumstances.
Made with Mettaphor 02/2025

Direct Moves Estate Agents Office

9 Westham Road
Dorset
Weymouth
DT4 8NP

Contact

01305 778500
sales@directmoves.com
<https://directmoves.com/>

Agents Note: Whilst every care has been taken to prepare these particulars, they are for guidance purposes only. All measurements are approximate and for general guidance purposes only and whilst every care has been taken to ensure accuracy, they should not be relied upon and potential buyers/tenants are advised to recheck the measurements.

