



Gloucester Mews , Weymouth DT4 7DA

- Two Bedroom first floor apartment
 - Short stroll to the beach
- Nearby to Weymouth Town centre
- Excellent investment opportunity
- No Forward Chain
- Ideal first time buy
- Newly fitted carpets throughout

Offers Over £150,000 Leasehold





Entrance

Entrance via ground floor solid wood main door, with intercom system leading into carpeted stairway with banisters each side.

Entrance of flat:

First floor access via a solid wood door leading into carpeted hallway that facilitates an intercom system and meter boards.

Bathroom

7'6" x 5'9"

Low level wall mounted radiator, laminate wood style flooring. Low level WC and sink basin with a stainless steel tap, bath unit with above head handheld shower and extractor fan

Kitchen

8'7" x 8'2"

Base and eye level storage with 1.5 sink and stainless steel tap, wall mounted Vaillant boiler, electric hob and oven

Lounge

Newly carpeted with side aspect, secondary glaze windows, low level wall mounted radiator, thermostat and range of plug sockets



Bed One

Newly carpeted, dual aspect secondary glaze windows.

Bed Two

10'6" x 10'9"

Side aspect secondary glazed window, newly carpeted, low level wall mounted radiator

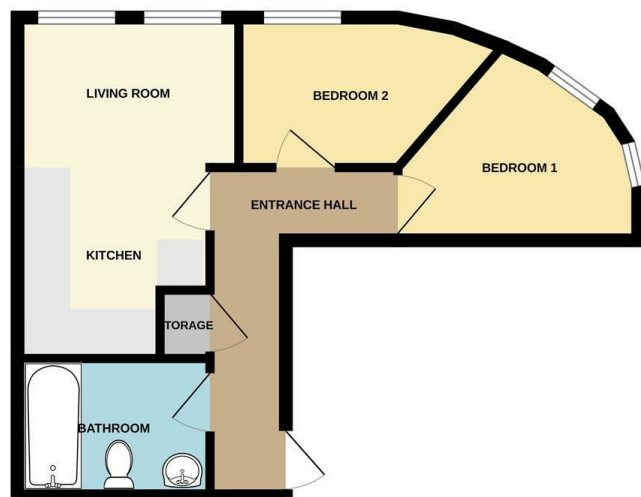
Disclaimer

Direct Moves Estate Agents make no representations or warranties regarding the accuracy, completeness, or reliability of the property details provided. These details are for informational purposes only and should not be relied upon in any way. The information is not intended to form part of any contract and does not constitute an offer or guarantee by Direct Moves.



Local Authority
Council Tax Band **C**
EPC Rating **B**

GROUND FLOOR



Whilst every attempt has been made to ensure the accuracy of the floorplan contained herein, measurements of plots, windows, rooms and any other items are approximate and no responsibility is taken for any error, omission or mis-statement. This plan is for illustrative purposes only and should be used as such by any prospective purchaser. The services, systems and appliances shown have not been tested and no guarantee is given for their operation or efficiency (not for green).
Made with Maptopia (2020)

Direct Moves Estate Agents Office

9 Westham Road
Dorset
Weymouth
DT4 8NP

Contact

01305 778500
sales@directmoves.com
<https://directmoves.com/>

Agents Note: Whilst every care has been taken to prepare these particulars, they are for guidance purposes only. All measurements are approximate and for general guidance purposes only and whilst every care has been taken to ensure accuracy, they should not be relied upon and potential buyers/tenants are advised to recheck the measurements.

