



Stavordale Road

, Weymouth DT4 0AF

- Over 55s
- Generous communal grounds
- Guest suites for visiting friends and family
- Communal facilities
- Short stroll to Weymouth harbour
- First floor with lift access
- Service Charge £3,460 & Ground Rent £360.00

Offers Over £75,000 Leasehold





Entrance

Accessed via a communal door with a secure entry fob and entry phone system, leading into a shared hallway. Stairs rise to the first floor, where the private apartment door opens into the hallway.

Hallway

Ceiling lights, doors to all rooms, and a large storage cupboard housing shelving and a water tank. Entry phone system and an additional cupboard with shelving and electric meter.

Lounge

15'1" x 10'2"

Rear aspect room with a double glazed window overlooking the communal gardens. Features include a storage heater, wall-mounted lights, TV and BT points, and multiple power outlets.

Kitchen

6'6" x 6'6"

Fitted with a range of eye-level and base units with work surfaces. Includes a stainless steel sink with drainer, space for an oven, extractor fan, and partly tiled walls. Vinyl flooring throughout.



Bedroom

11'5" x 8'10"

A bright rear aspect room with a double glazed window overlooking the communal gardens. Includes a storage heater, TV point, power sockets, and wall-mounted lighting.

Shower room

6'2" x 5'2"

Comprises a low level WC, large shower enclosure with low level entry door, and a pedestal wash hand basin. Partly tiled walls and a wall-mounted light fixture.

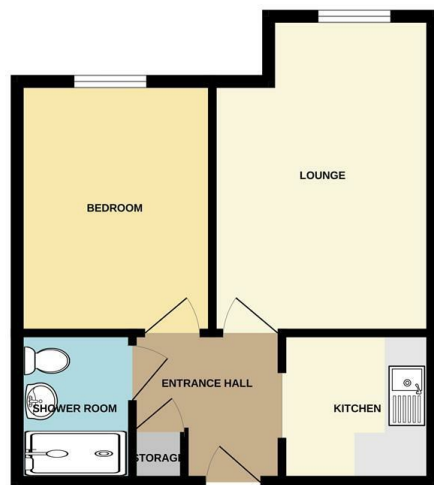
Disclaimer

Direct Moves Estate Agents make no representations or warranties regarding the accuracy, completeness, or reliability of the property details provided. These details are for informational purposes only and should not be relied upon in any way. The information is not intended to form part of any contract and does not constitute an offer or guarantee by Direct Moves.



Local Authority
Council Tax Band **A**
EPC Rating **B**

GROUND FLOOR



JENNER CT.

Whilst every effort has been made to ensure the accuracy of the information contained herein, measurements of plots, volumes, rooms and any other items are approximate and no responsibility is taken for any error, omission or misstatement. This plan is for guidance purposes only and should be used as such by any prospective purchaser. The services, systems and appliances shown have not been tested and no guarantee is given in respect of their operation or efficiency.

Made with Hoxiplex 12/2025

Direct Moves Estate Agents Office

9 Westham Road
Dorset
Weymouth
DT4 8NP

Contact

01305 778500
sales@directmoves.com
<https://directmoves.com/>

Agents Note: Whilst every care has been taken to prepare these particulars, they are for guidance purposes only. All measurements are approximate and for general guidance purposes only and whilst every care has been taken to ensure accuracy, they should not be relied upon and potential buyers/tenants are advised to recheck the measurements.