



Boleyn Crescent

, Weymouth DT4 9JX

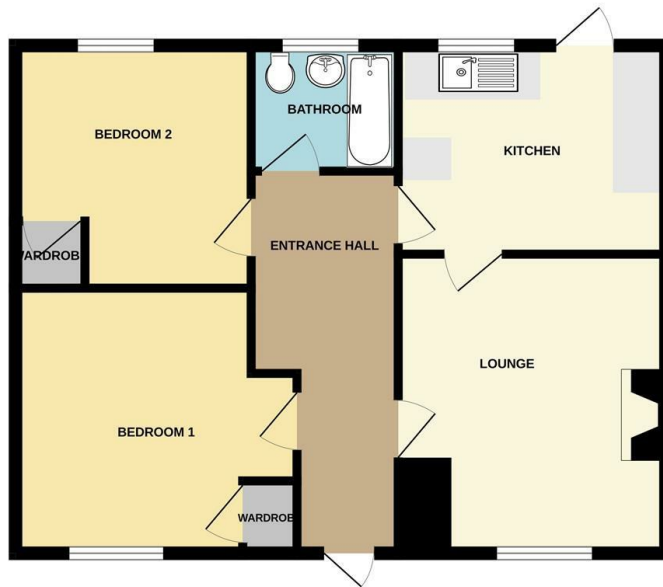
- Non-standard construction
 - Two bedrooms
- Generous rear garden
 - No forward chain
- Cash buyers only
 - Ground floor
- Adjacent to the popular Rodwell Trail

£140,000 Leasehold



Local Authority
Council Tax Band **A**
EPC Rating **C**

GROUND FLOOR



Whilst every attempt has been made to ensure the accuracy of the floorplan contained here, measurements of doors, windows, rooms and any other items are approximate and no responsibility is taken for any error, omission or misstatement. This plan is for illustrative purposes only and should be used as such by any prospective purchaser. The services, systems and appliances shown have not been tested and no guarantee as to their operability or efficiency can be given.
Made with Netplan 1.0.0.25

Direct Moves Estate Agents Office

9 Westham Road
Dorset
Weymouth
DT4 8NP

Contact

01305 778500
sales@directmoves.com
<https://directmoves.com/>

Agents Note: Whilst every care has been taken to prepare these particulars, they are for guidance purposes only. All measurements are approximate and for general guidance purposes only and whilst every care has been taken to ensure accuracy, they should not be relied upon and potential buyers/tenants are advised to recheck the measurements.

