

DIRECT



MOVES



Coade Street

Poundbury, Dorchester DT1 3FP

- Modern & relaxed living
 - Kitchen/diner
 - Cloakroom
- Sought-after Poundbury
- Two double bedrooms
 - Lounge
 - Allocated parking
 - Plethora of amenities

Offers Over £335,000 Freehold





Entrance

Entrance via front aspect door leading to hallway

Hallway

Wall mounted radiator, ceiling light, stairs leading to first floor, power points, door leading to lounge.

Lounge

Front aspect room with double glazed window, under stair storage, tv point, wall mounted radiator, opening leading to kitchen/diner.

Kitchen/diner

Rear aspect double glazed window, range of eye and base level units with work surfaces, stainless steel sink with drainer board, space for white goods, space for dining table, wall mounted radiator, cloak room with WC and wash hand basin and rear aspect door leading to rear garden.

First floor landing

Loft hatch, ceiling light, large airing cupboard with shelving doors leading to bedrooms, door leading to bathroom.



Bedroom one

Front aspect room with large double glazed window, TV point, ceiling light, large built-in wardrobe over stairs with hanging rails, Drayton thermostat.

Bedroom two

Rear aspect room with large double glaze window overlooking rear garden, hanging ceiling light, power points

Bathroom

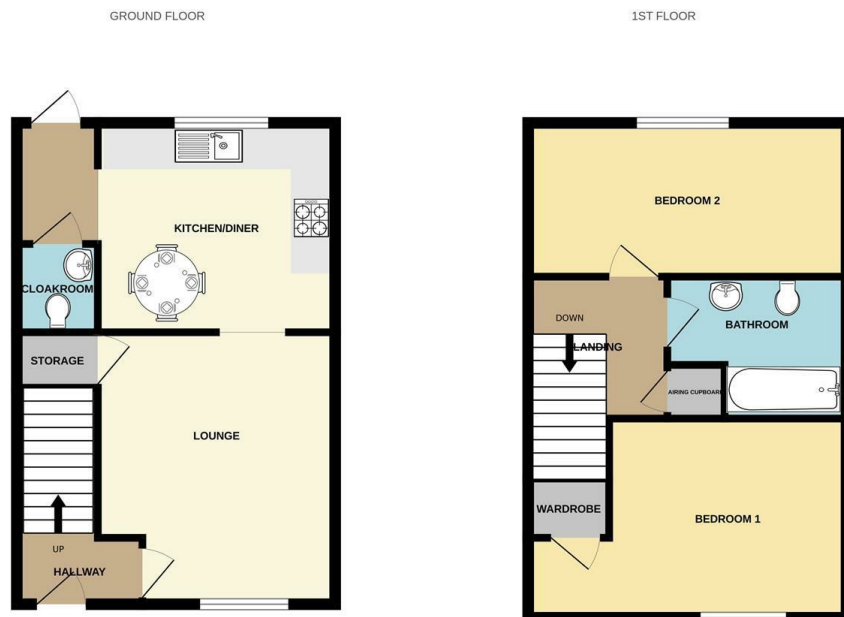
Panel enclosed bath with shower over, wall mounted radiator, low-level WC, pedestal wash hand basin with splash back tiling.

Rear garden

Mostly laid to lawn with patio area & fully fence enclosed, rear access leading to allocated parking



Local Authority
Council Tax Band C
EPC Rating B



Direct Moves Estate Agents Office

9 Westham Road
Dorset
Weymouth
DT4 8NP

Contact

01305 778500
sales@directmoves.com
<https://directmoves.com/>

Agents Note: Whilst every care has been taken to prepare these particulars, they are for guidance purposes only. All measurements are approximate and for general guidance purposes only and whilst every care has been taken to ensure accuracy, they should not be relied upon and potential buyers/tenants are advised to recheck the measurements.