

**DIRECT**



**MOVES**



## **Weymouth Bay Avenue**

, Weymouth DT3 5AE

- Three bedrooms
  - Utility
  - Lodmoor
- Weymouth Bay Avenue
- Lodmoor Country Park
- Dining room
- Generous rear garden
- Family home
- Walking distance to Weymouth beach

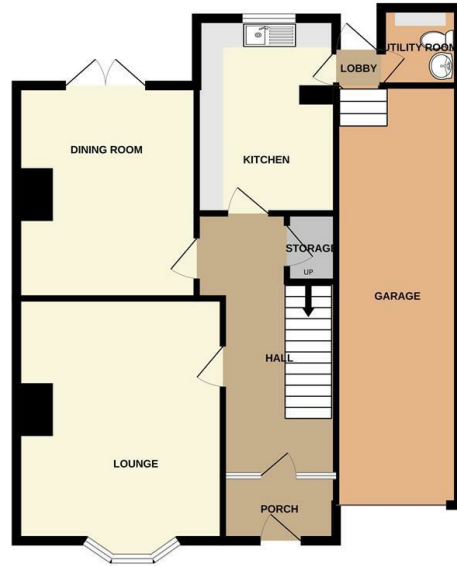
**Offers Over £420,000 Freehold**



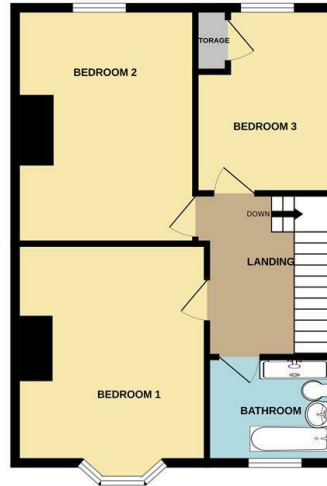


Local Authority  
Council Tax Band **D**  
EPC Rating **D**

GROUND FLOOR  
815 sq.ft. (75.7 sq.m.) approx.



1ST FLOOR  
548 sq.ft. (50.9 sq.m.) approx.



TOTAL FLOOR AREA : 1363 sq.ft. (126.6 sq.m.) approx.

Whilst every attempt has been made to ensure the accuracy of the floorplan contained here, measurements of doors, windows, rooms and any other items are approximate and no responsibility is taken for any error, omission or mis-statement. This plan is for illustrative purposes only and should be used as such by any prospective purchaser. The services, systems and appliances shown have not been tested and no guarantee as to their operability or efficiency can be given.  
Made with Metropix ©2024

### Direct Moves Estate Agents Office

9 Westham Road  
Dorset  
Weymouth  
DT4 8NP

### Contact

01305 778500  
[sales@directmoves.com](mailto:sales@directmoves.com)  
<https://directmoves.com/>

Agents Note: Whilst every care has been taken to prepare these particulars, they are for guidance purposes only. All measurements are approximate and for general guidance purposes only and whilst every care has been taken to ensure accuracy, they should not be relied upon and potential buyers/tenants are advised to recheck the measurements.

