

DIRECT



MOVES



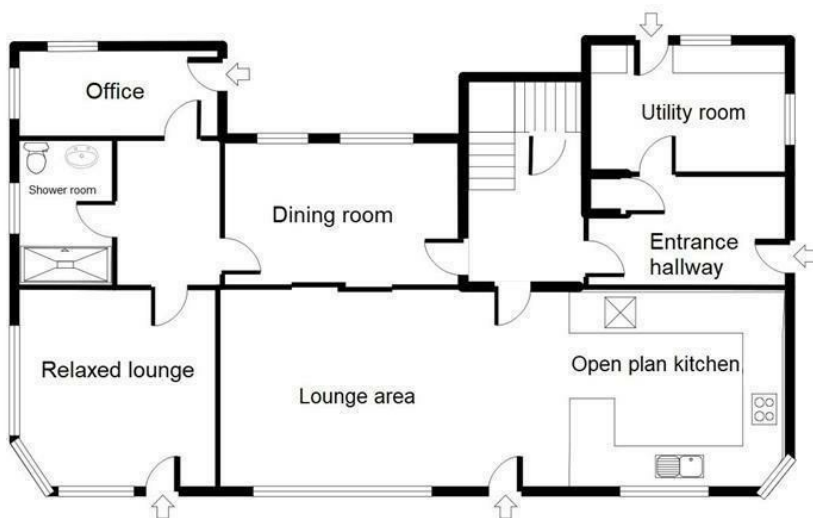
Jordan Hill

, Weymouth, DT3 6QF

- Breathtaking sea views from every living space and bedroom
 - Internally designed and recently renovated
 - Stunning internal finish throughout
 - Lawned gardens to front and rear
 - Two driveways providing generous parking
- Spacious 1930s family residence
 - Contemporary light and airy living spaces
 - Situated in extensive grounds
 - Stroll to Bowlease beach and coastal walks
 - No upper chain



Local Authority **Weymouth & Portland**
Council Tax Band **G**
EPC Rating



Direct Moves Estate Agents Office

9 Westham Road
Dorset
Weymouth
DT4 8NP

Contact

01305 778500
sales@directmoves.com
<https://directmoves.com/>

Agents Note: Whilst every care has been taken to prepare these particulars, they are for guidance purposes only. All measurements are approximate and for general guidance purposes only and whilst every care has been taken to ensure accuracy, they should not be relied upon and potential buyers/tenants are advised to recheck the measurements.