

**DIRECT**



**MOVES**

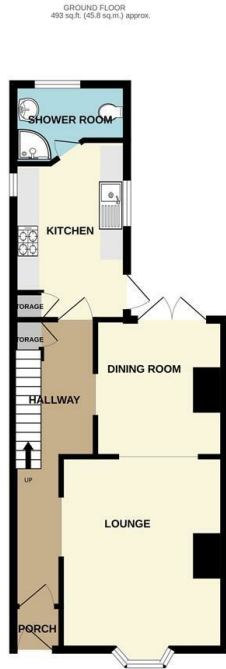


## **William Street** Weymouth DT4 7HG

- Outstanding seaside family home
- Open plan family / sociable living space
  - Stroll to beach and esplanade
  - Courtyard patio area
  - Flexible living
- Used as Holiday Home / Let
- Large parking area to rear for two cars
- Downstairs shower room, and further bathroom
- Exceptional condition throughout
- No chain

**Offers In The Region Of £320,000 Freehold**

Local Authority  
Council Tax Band B  
EPC Rating



TOTAL FLOOR AREA: 1121 sq.ft. (104.1 sq.m.) approx.  
Whilst every attempt has been made to ensure the accuracy of the floorplan contained here, measurements of doors, windows, rooms and any other items are approximate and no responsibility is taken for any error, omission or mis-statement. This plan is for illustrative purposes only and should be used as such by any prospective purchaser. The services, systems and appliances shown have not been tested and no guarantee as to their operability or efficiency can be given.  
Made with Metropix ©2024

**Direct Moves Estate Agents Office**

9 Westham Road  
Dorset  
Weymouth  
DT4 8NP

**Contact**

01305 778500  
sales@directmoves.com  
<https://directmoves.com/>

Agents Note: Whilst every care has been taken to prepare these particulars, they are for guidance purposes only. All measurements are approximate and for general guidance purposes only and whilst every care has been taken to ensure accuracy, they should not be relied upon and potential buyers/tenants are advised to recheck the measurements.

