

DIRECT



MOVES



Melcombe Place

, Weymouth DT4 7HL

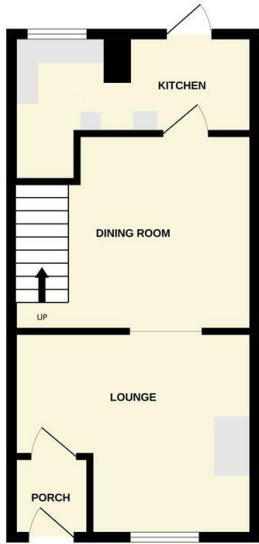
- Two bedroom with loft room
 - Fitted Kitchen
- Low maintenance walled garden
 - Front garden
 - Spacious throughtout
- Large Living area
- Minutes walk to beach
- Beach and esplanade location
 - No chain
- Town location, quiet road

Best Offers Over £225,000 Freehold

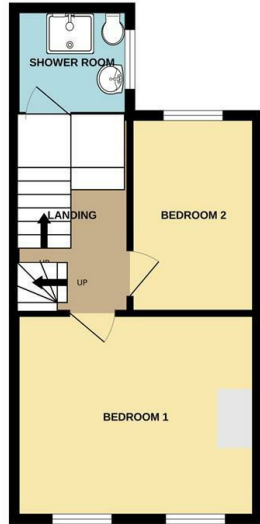


Local Authority **Weymouth & Portland Borough Council**
Council Tax Band **B**
EPC Rating **E**

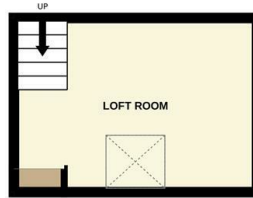
GROUND FLOOR



1ST FLOOR



2ND FLOOR



Whilst every attempt has been made to ensure the accuracy of the floorplan contained here, measurements of doors, windows, rooms and any other items are approximate and no responsibility is taken for any error, omission or mis-statement. This plan is for illustrative purposes only and should be used as such by any prospective purchaser. The services, systems and appliances shown have not been tested and no guarantee as to their operability or efficiency can be given.
Made with Metropix ©2024

Direct Moves Estate Agents Office

9 Westham Road
Dorset
Weymouth
DT4 8NP

Contact

01305 778500
sales@directmoves.com
<https://directmoves.com/>

Agents Note: Whilst every care has been taken to prepare these particulars, they are for guidance purposes only. All measurements are approximate and for general guidance purposes only and whilst every care has been taken to ensure accuracy, they should not be relied upon and potential buyers/tenants are advised to recheck the measurements.