

DIRECT



MOVES



East Farm

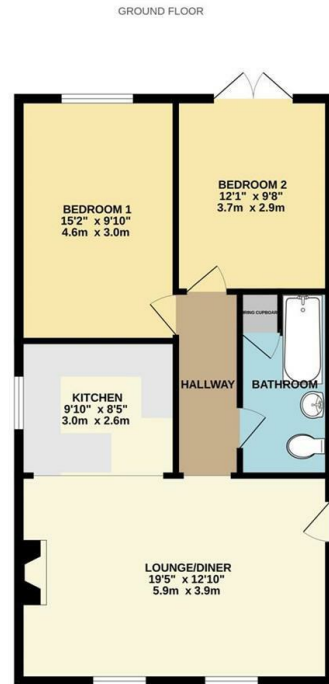
Osmington, Osmington DT3 6EX

- Delightful two bedroom bungalow
- Countryside walks and coastal paths
 - Modern and relaxed living
 - Osmington village
 - Parking for two cars
- Charming rear garden.
- Located in most desirable village
 - No Onward Chain
- Picture perfect location near coastal walks

Offers Over £300,000 Freehold



Local Authority
Council Tax Band **B**
EPC Rating



Whilst every effort has been made to ensure the accuracy of the description contained herein, measurements of doors, windows, rooms and any other items are approximate and no responsibility is taken for any error, omission or mis-statement. This plan is for illustrative purposes only and should be used as such by any prospective purchaser. The services, systems and appliances shown have not been tested and no guarantee is given as to their operability or efficiency can be given.
Made with floorplan 12/2024

Direct Moves Estate Agents Office

9 Westham Road
Dorset
Weymouth
DT4 8NP

Contact

01305 778500
sales@directmoves.com
<https://directmoves.com/>

Agents Note: Whilst every care has been taken to prepare these particulars, they are for guidance purposes only. All measurements are approximate and for general guidance purposes only and whilst every care has been taken to ensure accuracy, they should not be relied upon and potential buyers/tenants are advised to recheck the measurements.

