

DIRECT



MOVES



Oldridge Road

Chickerell, Weymouth DT3 4FN

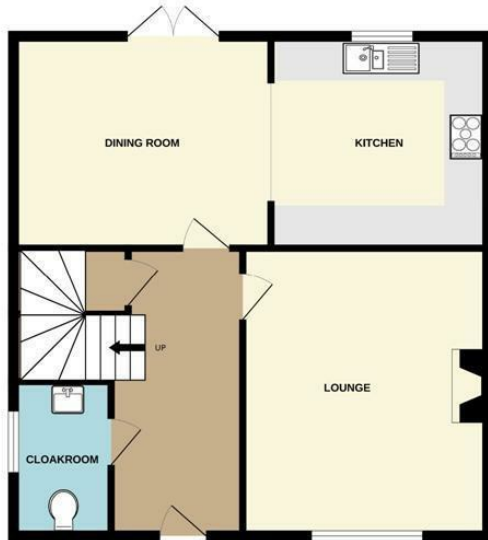
- Recently built detached family home
 - Master en-suite shower room
 - Own driveway to side
 - NHBC guarantee
 - No upper chain
- Three double bedrooms
 - Family bathroom
- South facing rear garden
- Direct access to garden
 - Chickerell location

Asking Price £435,000 Freehold



Local Authority **Weymouth & Portland Borough Council**
Council Tax Band **D**
EPC Rating

GROUND FLOOR



1ST FLOOR



Whilst every attempt has been made to ensure the accuracy of the floorplan contained here, measurements of doors, windows, rooms and any other items are approximate and no responsibility is taken for any error, omission or mis-statement. This plan is for illustrative purposes only and should be used as such by any prospective purchaser. The services, systems and appliances shown have not been tested and no guarantee as to their operability or efficiency can be given.
Made with Metropix ©2024

Direct Moves Estate Agents Office

9 Westham Road
Dorset
Weymouth
DT4 8NP

Contact

01305 778500
sales@directmoves.com
<https://directmoves.com/>

Agents Note: Whilst every care has been taken to prepare these particulars, they are for guidance purposes only. All measurements are approximate and for general guidance purposes only and whilst every care has been taken to ensure accuracy, they should not be relied upon and potential buyers/tenants are advised to recheck the measurements.

