



19 Trevelyan Close

Shiremoor, Newcastle Upon Tyne, NE27 0FJ

Offers Over £130,000



Trading Places



19 Trevelyan Close

Shiremoor, Newcastle Upon Tyne, NE27 0FJ

Trading Places welcome to the market this charming top floor apartment located in the popular development of Trevelyan Close. Situated in a peaceful cul-de-sac, the stylish apartment boasts a secure entry system, two double bedrooms and a fabulous sized lounge with two Juliette balconies; the living area flows into the contemporary breakfasting kitchen with integrated appliances.

Nestled to the rear of the residential development, the property's position is unmatched. With direct access to a variety of local scenic walks, as well as local amenities such as shops and schooling for all ages and excellent transport links such as A19, the location is ideal.

The secure communal entrance leads up to the apartment positioned on the top floor. Upon entering, there is an inviting reception hall which provides access to all principal rooms, whilst also housing integral storage. The open plan lounge kitchen is flooded with natural cheerful light from the two Juliette balconies. There is a contemporary kitchen fitted with all necessary appliances such as an integral fridge freezer, hob, oven, extractor hood, washing machine and dishwasher. The two double bedrooms offer plenty of space and comfort; the master bedroom further benefits from an en-suite shower room. Finishing off the apartment is the sizable main bathroom. One of the highlights of this apartment is the private car park with allocated parking, ensuring convenience for residents. Additionally, there is visitor parking available.

Whether you're looking for a cozy home or a smart investment opportunity, this property has the potential to meet your needs. Don't miss out on the chance to own or rent this lovely apartment in a desirable location. Book a viewing today with Trading Places on 0191-2511189. EPC Rating B.

Communal Entrance

Secured communal entrance to the front of property giving access to all levels.

Hallway

Entrance through front door into private hallway with single radiator. Doors leading to lounge/kitchen, bedroom one with en-suite, bedroom two and bathroom. Large cupboard providing additional storage. Loft hatch benefitting from ladder, light and boarded floors.

Lounge

13'11 x 12'2 (4.24m x 3.71m)

The rear facing living area is bright and airy incorporating two Juliette balconies with French doors allowing an abundance of natural light. Two double radiators and open plan to the kitchen.

Kitchen

10'10 x 10'3 (3.30m x 3.12m)

Modern kitchen benefitting from wall, base and drawer units with quartz worktops to up stands incorporating one and a half bowl sink with mixer taps and grooves into granite. Integrated appliances include single oven, ceramic hob, chimney hood, fridge freezer, dishwasher and washing machine. There are ceiling spotlights, UPVC double glazed window and cupboard housing wall mounted combi boiler.





Bedroom One

13'0 x 11 (3.96m x 3.35m)

A good sized double bedroom which is bright and side facing with UPVC double glazed window, single radiator, TV point and door to the en-suite.

En-Suite

Complete with a walk in shower, pedestal wash basin and low level WC. There is an extractor fan, ceiling spotlights, partially tiled walls and towel warmer.

Bedroom Two

13'0 x 9'4 (3.96m x 2.84m)

Another well appointed double bedroom which is side facing with UPVC double glazed window and single radiator.

Bathroom

Bathroom complete with paneled bath, pedestal wash basin and low level WC. There is an extractor fan, ceiling spotlights, partially tiled walls, fully around bath to suit shower installation and a towel warmer.

External

Externally there are well kept communal gardens with allocated parking bays for residents and visitor.

Lease Details

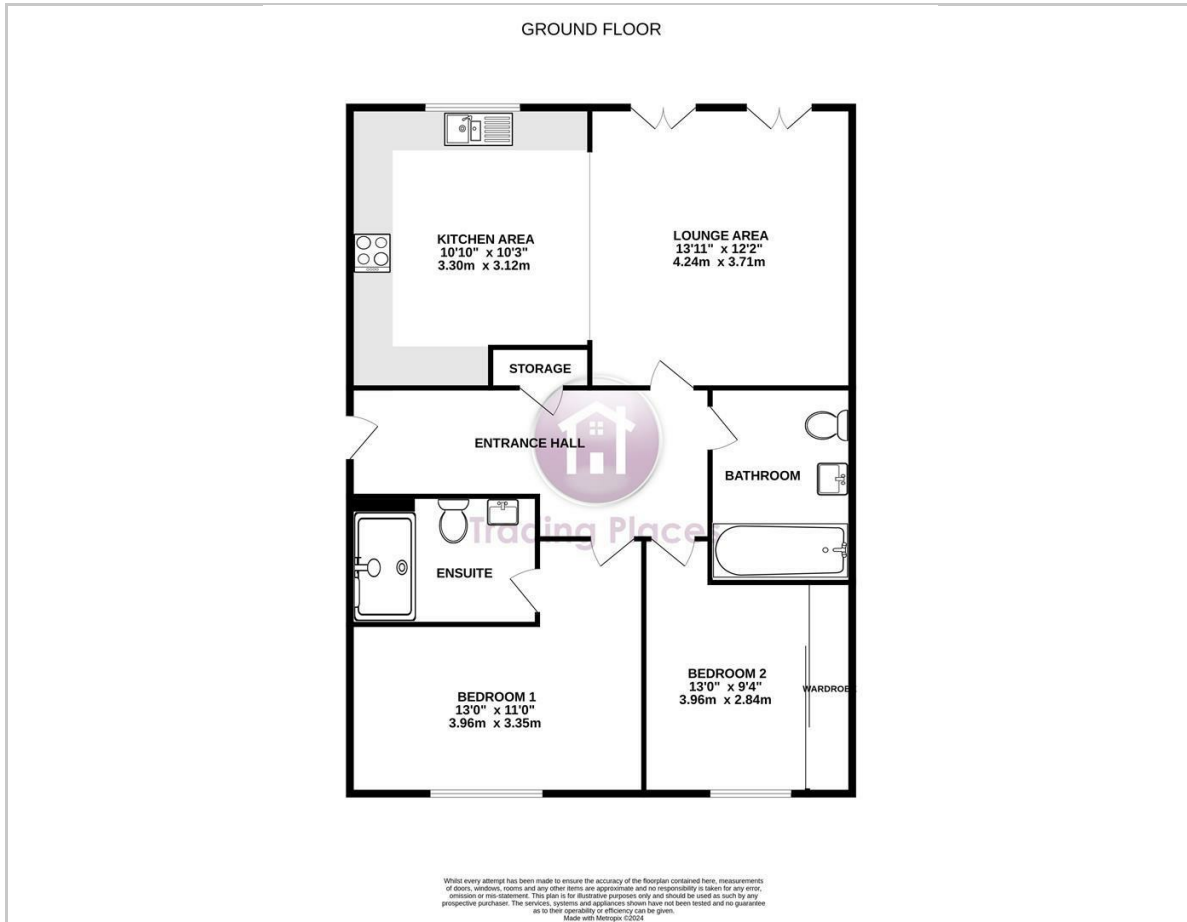
Lease Term: 125 years from 1 January 2016

Annual Ground Rent: £110.00

Quarterly Service Charge: £241.61



Floor Plan

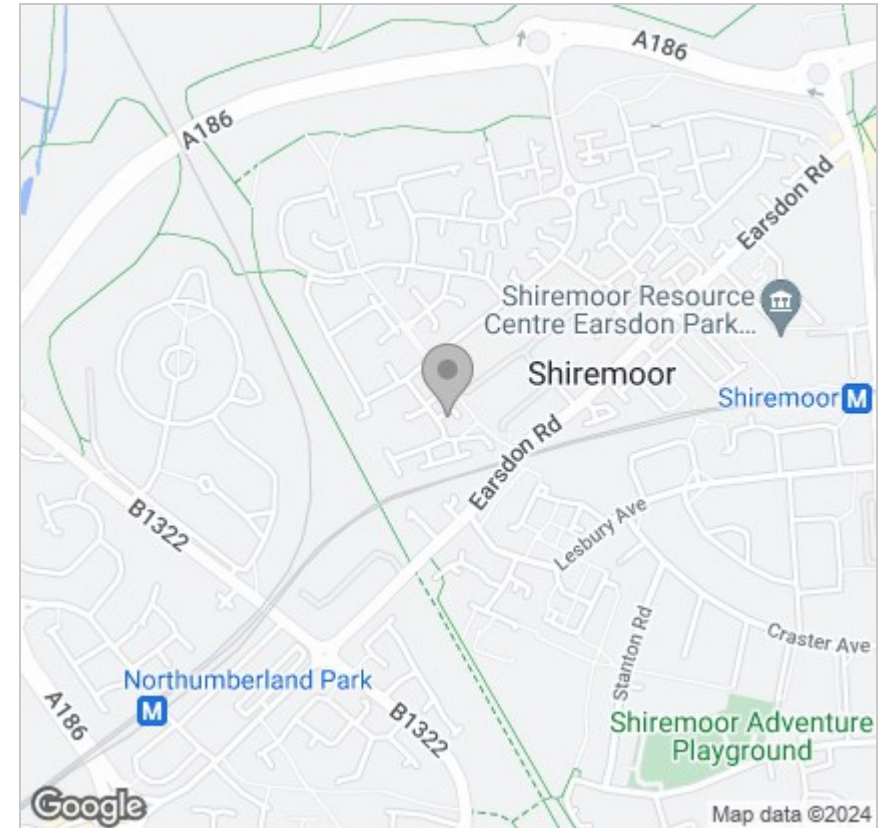


Viewing

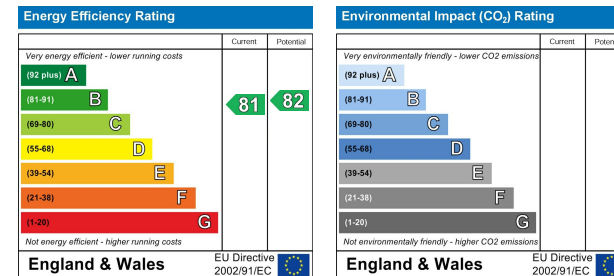
Please contact our Trading Places Office on 0191 251 1189 if you wish to arrange a viewing appointment for this property or require further information.

These particulars, whilst believed to be accurate are set out as a general outline only for guidance and do not constitute any part of an offer or contract. Intending purchasers should not rely on them as statements of representation of fact, but must satisfy themselves by inspection or otherwise as to their accuracy. No person in this firm's employment has the authority to make or give any representation or warranty in respect of the property.

Area Map



Energy Efficiency Graph



82 Park View, Whitley Bay, Tyne and Wear, NE26 2TH
 Tel: 0191 251 1189
 Email: info@tp-property.co.uk
 www.tp-property.co.uk



Trading Places