



**Venables Court, Lincoln**

**£750 PCM**



Venables Court, Lincoln

Apartment

2 Bedrooms, 2 Bathroom

£750 PCM

Date Available: 24th October 2025

Deposit: £865

Unfurnished

- Two Bedroom Second Floor Apartment
- Off Road Parking Available
- Four Piece Bathroom Suite
- Over 55's Development
- Disabled Access Plus Lift
- Kitchen with Integrated Appliances
- Secure Entry System
- EPC Rating - C / Council Tax Band - B

A 2 Bedroom Apartment with access via stairs or lift, situated in an Over 55's complex, Internally there are 2 double bedrooms, spacious Lounge and Fitted kitchen with all appliances, bathroom with bath and separate shower cubicle. The apartment comes with allocated parking and is available for long term



Two bedroom second floor apartment located within a popular Over 55's development in an excellent location having a number of amenities close by. Benefiting from a secured entrance, communal areas, disabled access plus a lift. Electric heating and off road parking.

Within walking distance to the Carlton Centre shopping precinct, this property is ideally situated for both amenities and public transport in and out of the city.

Unfortunately the lease restrictions dictate that we cannot accept smokers or pets on this property.

Length of tenancy - 6 months initial tenancy

Council tax band - B - Lincoln  
EPC Rating - C

Mobile (based on calls indoors)  
O2 EE Three Vodafone

Broadband (estimated speeds)  
Standard 4 mbps  
Superfast 80 mbps  
Ultrafast 1000 mbps

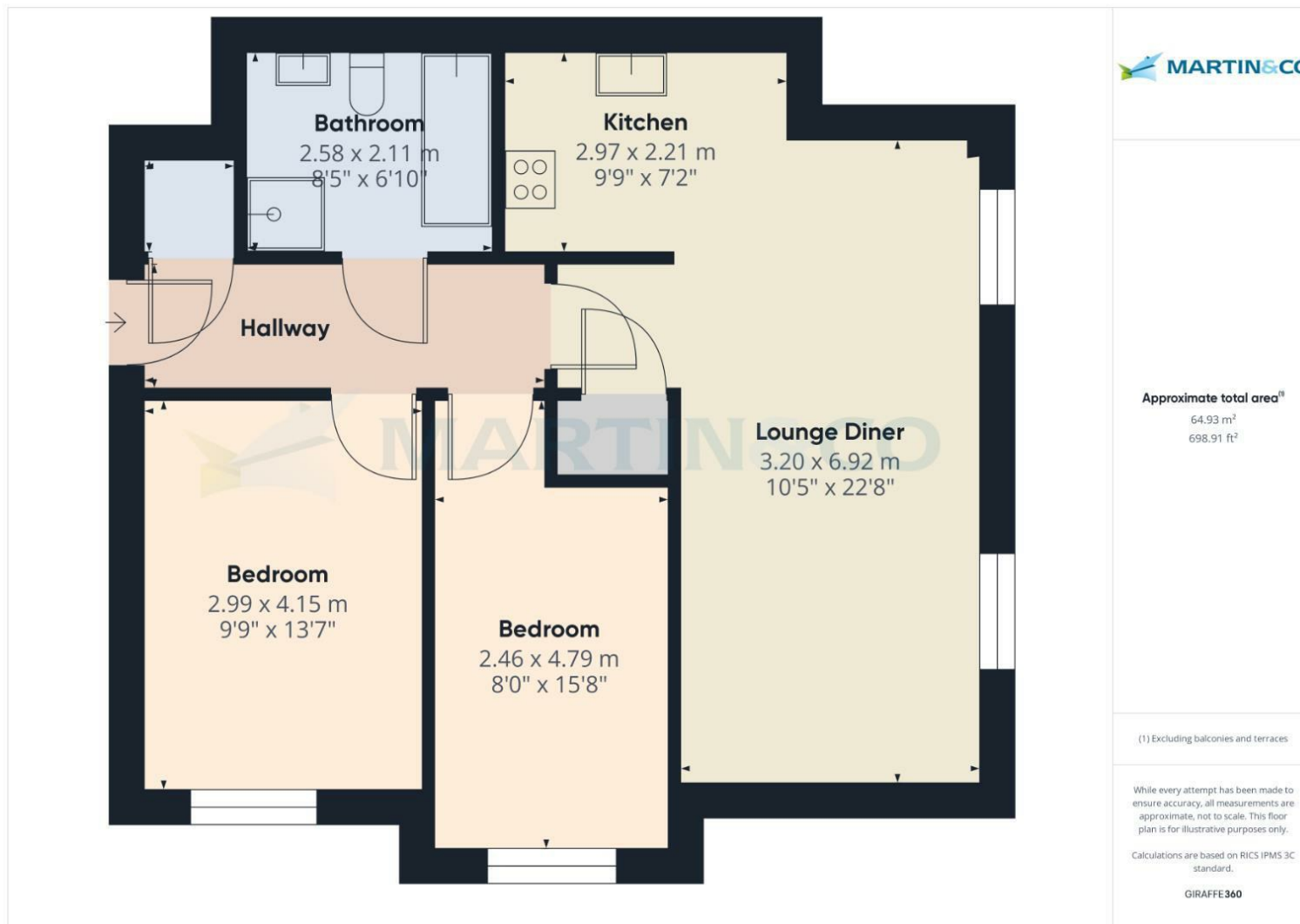
Satellite & Cable TV Availability  
BT Sky



Energy Efficiency Rating		
	Current	Potential
Very energy efficient - lower running costs		
(92 plus) <b>A</b>		
(81-91) <b>B</b>		
(69-80) <b>C</b>		
(55-68) <b>D</b>		
(39-54) <b>E</b>		
(21-38) <b>F</b>		
(1-20) <b>G</b>		
Not energy efficient - higher running costs		
England & Wales	EU Directive 2002/91/EC	EU Directive 2002/91/EC

Environmental Impact (CO <sub>2</sub> ) Rating		
	Current	Potential
Very environmentally friendly - lower CO <sub>2</sub> emissions		
(92 plus) <b>A</b>		
(81-91) <b>B</b>		
(69-80) <b>C</b>		
(55-68) <b>D</b>		
(39-54) <b>E</b>		
(21-38) <b>F</b>		
(1-20) <b>G</b>		
Not environmentally friendly - higher CO <sub>2</sub> emissions		
England & Wales	EU Directive 2002/91/EC	EU Directive 2002/91/EC





**Martin & Co Lincoln Lettings**  
33 The Forum, North Hykeham, Lincoln, Lincolnshire, LN6  
8HW  
01522 503727 . [lincoln@martinco.com](mailto:lincoln@martinco.com)

**01522 503727**  
**<http://www.martinco.com>**

**MARTIN&CO**

**Accuracy:** References to the Tenure of a Property are based on information supplied by the Seller. The Agent has not had sight of the title documents. A Buyer is advised to obtain verification from their Solicitor. Items shown in photographs including but not limited to carpets, fixtures and fittings are not included unless specifically mentioned within the sales particulars. They may however be available by separate negotiation. Buyers must check the availability of any property and make an appointment to view before embarking on any journey to see a property. No person in the employment of the agent has any authority to make any representation about the property, and accordingly any information given is entirely without responsibility on the part of the agents, sellers(s) or lessors(s). Any property particulars are not an offer or contract, nor form part of one. **Sonic / Laser Tape:** Measurements taken using a sonic / laser tape measure may be subject to a small margin of error. **All Measurements:** All Measurements are Approximate. **Services Not tested:** The Agent has not tested any apparatus, equipment, Fixtures and Fittings or services and so cannot verify that they are in working order or fit for the purpose. A Buyer is advised to obtain verification from their Solicitor or Surveyor.