



**Caesar Road, North Hykeham,
Lincoln**

0750 500


MARTIN&CO

Caesar Road, North Hykeham,
Lincoln

Apartment

2 Bedrooms, 2 Bathroom

£750 PCM

Date Available: 16th August 2024

Deposit: £865

Unfurnished

- First Floor Apartment
- Freshly Decorated and New Flooring
- Fitted Kitchen
- Electric Heating
- Communal Garden
- Allocated Parking
- EPC Rating - C
- Council Tax Band - A

Modern first floor two bedroom apartment located within the popular Manor Farm estate in North Hykeham benefiting from access to a wide range of local amenities. Comprising internally of a hall, fitted kitchen, lounge diner, two bedrooms and a bathroom. Allocated parking externally for one vehicle.



Modern first floor two bedroom apartment located within the popular Manor Farm estate in North Hykeham benefiting from access to a wide range of local amenities. Comprising internally of a hall, fitted kitchen, lounge diner, two bedrooms and a bathroom. Allocated parking externally for one vehicle. Property has been freshly decorated and new carpet flooring fitted.

North Hykeham is situated to the south of Lincoln, benefitting from local schooling and amenities plus easy access to the A46 bypass.

Unfortunately we cannot accept smokers or pets on this property.

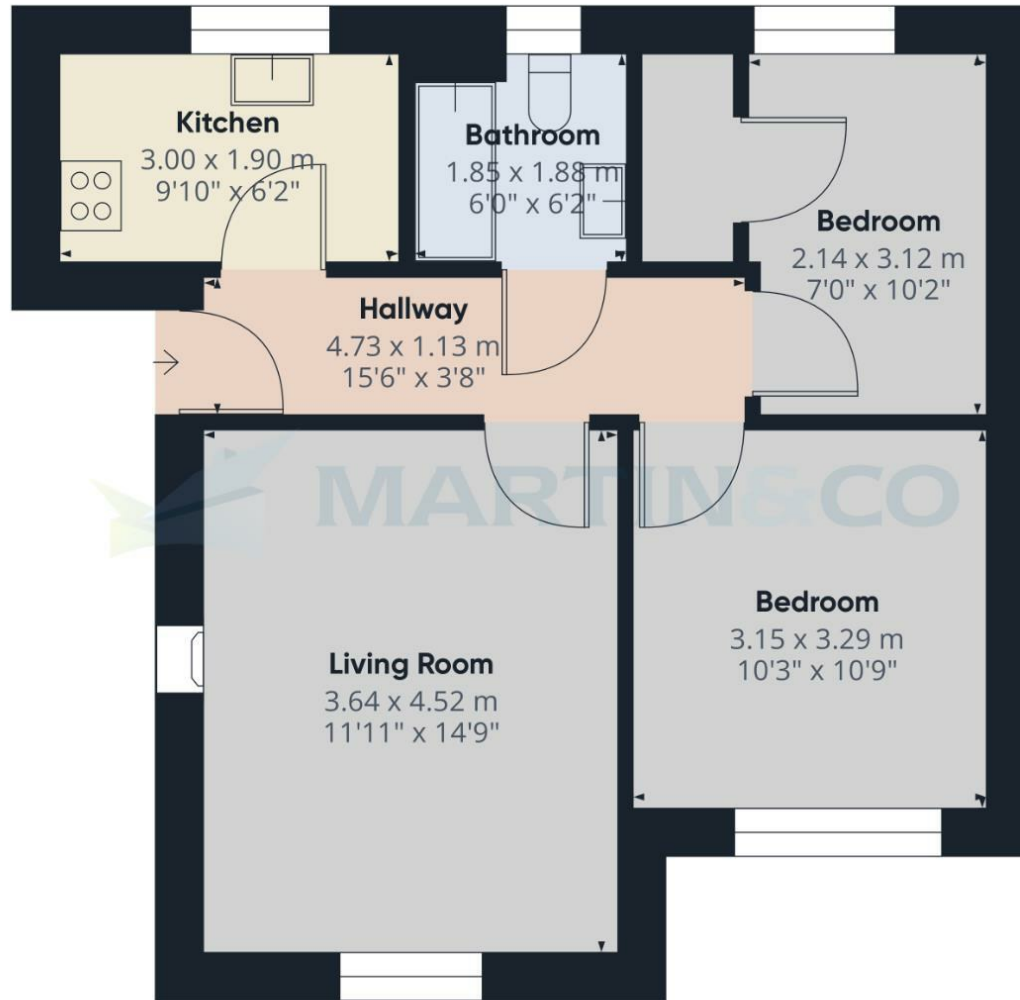
Length of tenancy - 12 months initial tenancy.

- EPC Rating - C
- Council tax band - A - North Kesteven
- Mobile (based on calls indoors) - EE, O2, Vodafone, Three
- Broadband (estimated speeds) - 5mbps (Standard), 80mbps (Superfast), 10000mbps (Ultrafast)
- Satellite & Cable TV Availability - BT, Sky



Energy Efficiency Rating		
	Current	Potential
Very energy efficient - lower running costs		
(92 plus) A		
(81-91) B		
(69-80) C		
(55-68) D		
(39-54) E		
(21-38) F		
(1-20) G		
Not energy efficient - higher running costs		
	78	85
England & Wales	EU Directive 2002/91/EC	

Environmental Impact (CO ₂) Rating		
	Current	Potential
Very environmentally friendly - lower CO ₂ emissions		
(92 plus) A		
(81-91) B		
(69-80) C		
(55-68) D		
(39-54) E		
(21-38) F		
(1-20) G		
Not environmentally friendly - higher CO ₂ emissions		
England & Wales	EU Directive 2002/91/EC	



Approximate total area⁽¹⁾
49.81 m²
536.15 ft²

(1) Excluding balconies and terraces

While every attempt has been made to ensure accuracy, all measurements are approximate, not to scale. This floor plan is for illustrative purposes only.

Calculations are based on RICS IPMS 3C standard.

GIRAFFE360

Martin & Co Lincoln Lettings
33 The Forum, North Hykeham, Lincoln, Lincolnshire, LN6
8HW
01522 503727 . lincoln@martinco.com

01522 503727
<http://www.martinco.com>



Accuracy: References to the Tenure of a Property are based on information supplied by the Seller. The Agent has not had sight of the title documents. A Buyer is advised to obtain verification from their Solicitor. Items shown in photographs including but not limited to carpets, fixtures and fittings are not included unless specifically mentioned within the sales particulars. They may however be available by separate negotiation. Buyers must check the availability of any property and make an appointment to view before embarking on any journey to see a property. No person in the employment of the agent has any authority to make any representation about the property, and accordingly any information given is entirely without responsibility on the part of the agents, sellers(s) or lessors(s). Any property particulars are not an offer or contract, nor form part of one. **Sonic / laser Tape:** Measurements taken using a sonic / laser tape measure may be subject to a small margin of error. **All**

Measurements: All Measurements are Approximate. **Services Not tested:** The Agent has not tested any apparatus, equipment, Fixtures and Fittings or services and so cannot verify that they are in working order or fit for the purpose. A Buyer is advised to obtain verification from their Solicitor or Surveyor.

