

TO LET



King Street, Goldthorpe
£650 pcm


MARTIN&CO

King Street, Goldthorpe

Mid Terraced House,
2 bedroom, 1 bathroom

£650 pcm

Date available: Available Now

Deposit: £750

Unfurnished

Council Tax band: A

- Close To Local Shops
- Close To Local School
- Built in Oven & Hob
- Neutral Modern Decor Throughout
- Enclosed Rear Yard
-
-

We are pleased to offer for rent, this two bedroom house situated on KING STREET, Goldthorpe.

This property consists of a cozy lounge, kitchen with built in oven and hob, one double bedroom and one single bedroom and a family bathroom. There is an enclosed rear garden.

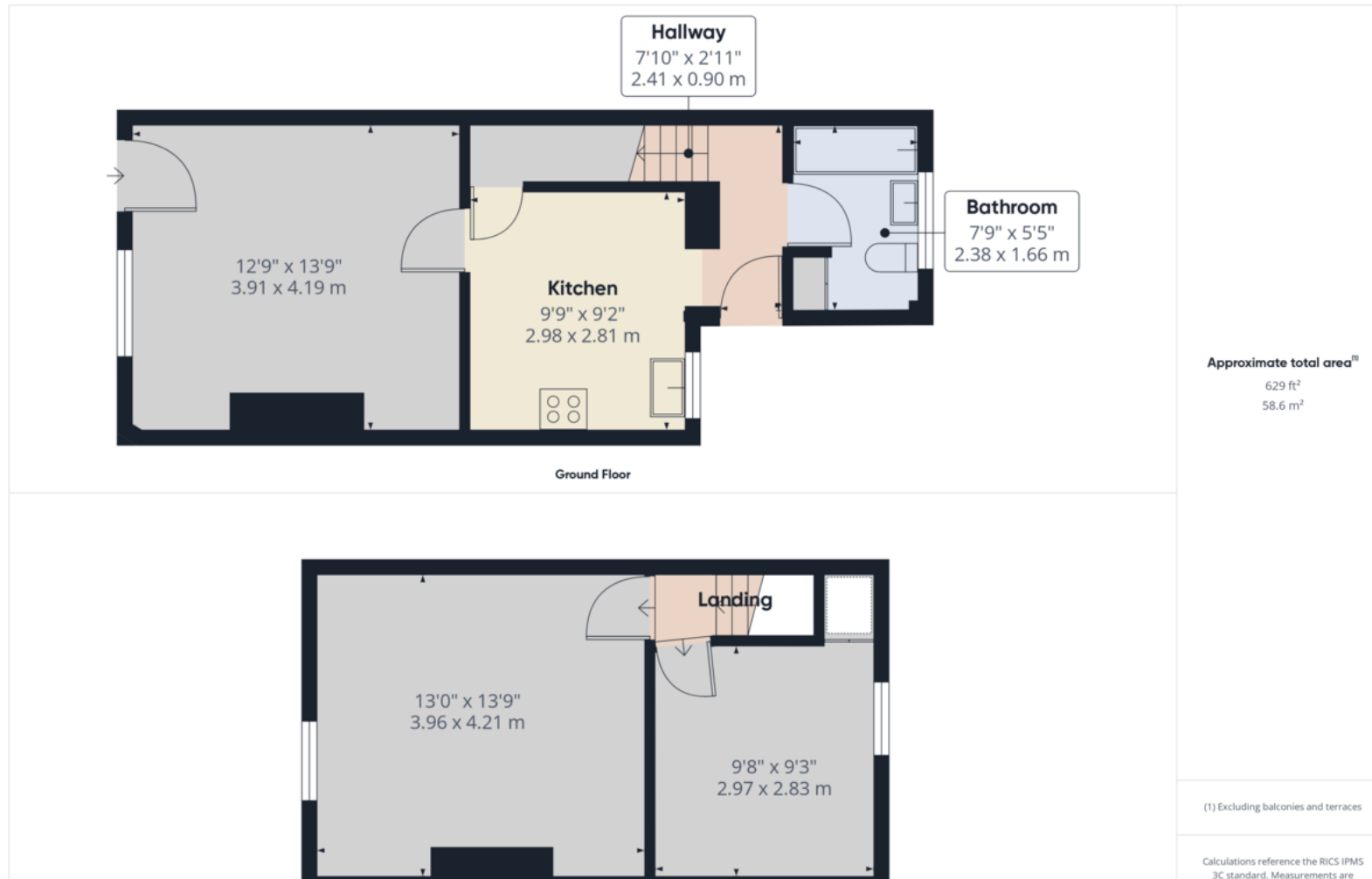
The property is decorated with neutral, modern decor throughout and is in a popular location which boasts excellent transport links and easy access to local amenities. Be sure not to miss out!





Energy Efficiency Rating		
	Current	Potential
Very energy efficient - lower running costs		
(92-100) A		
(81-91) B		88
(69-80) C	69	
(55-68) D		





Martin & Co Rotherham

5 Worry Goose Lane • Whiston • Rotherham • S60 4AA
T: 01709 544982 • E: rotherham@martinco.com

01709 544982
<http://www.martinco.com>



Accuracy: References to the Tenure of a Property are based on information supplied by the Seller. The Agent has not had sight of the title documents. A Buyer is advised to obtain verification from their Solicitor. Items shown in photographs including but not limited to carpets, fixtures and fittings are not included unless specifically mentioned within the sales particulars. They may however be available by separate negotiation. Buyers must check the availability of any property and make an appointment to view before embarking on any journey to see a property. No person in the employment of the agent has any authority to make any representation about the property, and accordingly any information given is entirely without responsibility on the part of the agents, sellers(s) or lessors(s). Any property particulars are not an offer or contract, nor form part of one. **Sonic / Laser Tape:** Measurements taken using a sonic / laser tape measure may be subject to a small margin of error. **All Measurements:** All Measurements are Approximate. **Services Not tested:** The Agent has not tested any apparatus, equipment, fixtures and fittings or services and so cannot verify that they are in working order or fit for the purpose. A Buyer is advised to obtain verification from their Solicitor or Surveyor.