

**TO LET**



**Cross Street, Goldthorpe**  
**£590 pcm**

**MARTIN&CO**



## Cross Street, Goldthorpe

Mid Terraced House,  
2 bedroom, 1 bathroom

£590 pcm

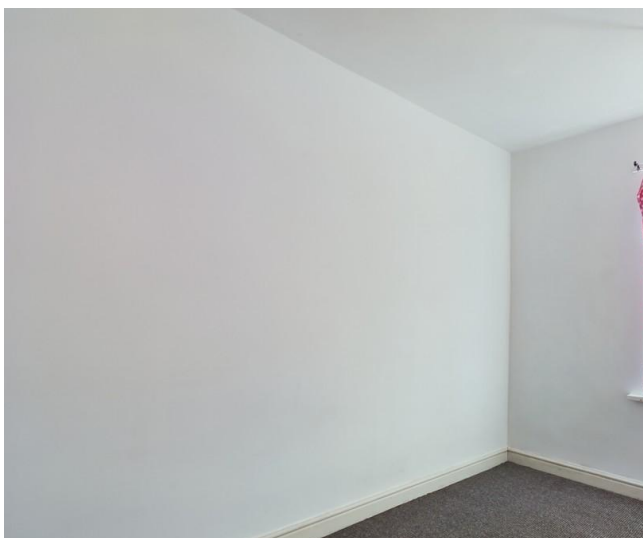
Date available: Available Now

Deposit: £680

Unfurnished

Council Tax band: A

- Terraced
- 2 bedrooms
- Kitchen/Diner
- Close to Amenities
- Central Heating
- 
- 

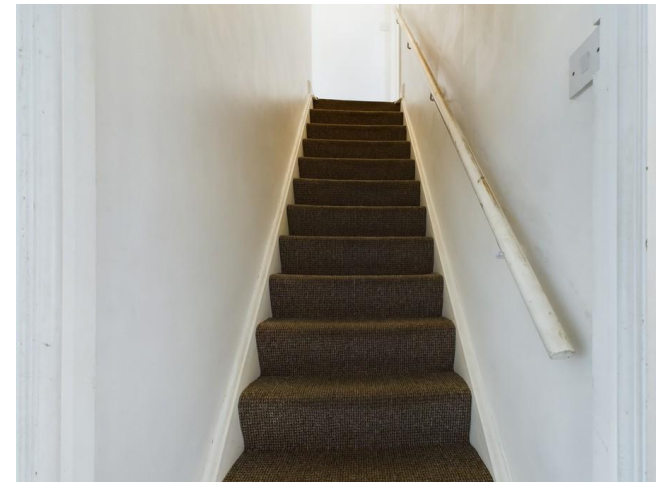


Situated in the heart of Goldthorpe, this two-bedroom mid-terrace home offers a fantastic opportunity for a range of renters. With excellent access to local amenities, schools, shops, and transport links,

The property benefits from central heating, built in oven, hob and extractor fan and has a useful outhouse and good sized garden.

Goldthorpe offers a range of amenities within easy reach, including supermarkets such as Tesco and Aldi, as well as a variety of local shops and services. Schools in the area, including Goldthorpe Primary Academy and Astrea Academy Dearne, are well-regarded and conveniently located for families.

For those who commute, the property benefits from excellent transport links. Goldthorpe train station provides connections to Rotherham, Doncaster, and Barnsley, while nearby road links, including the A635 and A1(M), make travel across the region straightforward.

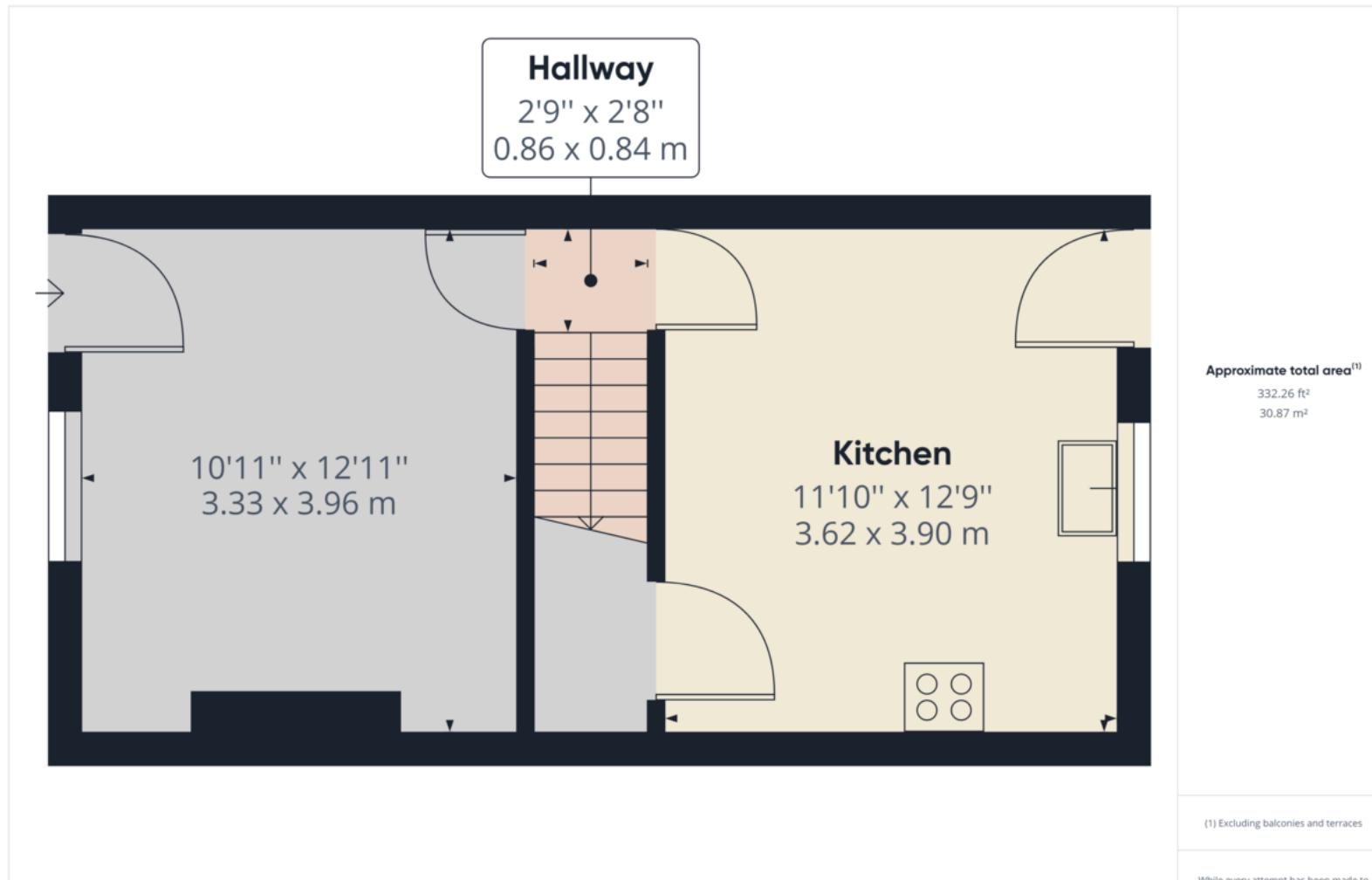






Energy Efficiency Rating		
	Current	Potential
Very energy efficient - lower running costs		
(92-100) <b>A</b>		
(81-91) <b>B</b>		90
(69-80) <b>C</b>	71	
(55-68) <b>D</b>		





## Martin & Co Rotherham

5 Worry Goose Lane • Whiston • Rotherham • S60 4AA  
T: 01709 544982 • E: rotherham@martinco.com

**01709 544982**

<http://www.martinco.com>

**MARTIN&CO**

**Accuracy:** References to the Tenure of a Property are based on information supplied by the Seller. The Agent has not had sight of the title documents. A Buyer is advised to obtain verification from their Solicitor. Items shown in photographs including but not limited to carpets, fixtures and fittings are not included unless specifically mentioned within the sales particulars. They may however be available by separate negotiation. Buyers must check the availability of any property and make an appointment to view before embarking on any journey to see a property. No person in the employment of the agent has any authority to make any representation about the property, and accordingly any information given is entirely without responsibility on the part of the agents, sellers(s) or lessors(s). Any property particulars are not an offer or contract, nor form part of one. **Sonic / Laser Tape:** Measurements taken using a sonic / laser tape measure may be subject to a small margin of error. **All Measurements:** All Measurements are Approximate. **Services Not tested:** The Agent has not tested any apparatus, equipment, fixtures and fittings or services and so cannot verify that they are in working order or fit for the purpose. A Buyer is advised to obtain verification from their Solicitor or Surveyor.