

**TO LET**



**Cotswold Crescent, Whiston**  
**£900 pcm**

  
**MARTIN&CO**

## Cotswold Crescent, Whiston

Detached Bungalow,  
2 bedroom, 1 bathroom

£900 pcm

Date available: Available Now

Deposit: £1,038

Unfurnished

Council Tax band: D

- Fantastic Location
- Driveway
- Two double bedrooms
- Neutral décor throughout
- Conservatory
- Available now
- Enclosed rear garden

Please welcome to the market this stunning detached bungalow, situated on a popular street in Whiston, close to all local amenities and motorway links.

Briefly the property comprises of an entrance hallway to the front, leading off to the spacious lounge with a lovely bay window, there is also a fireplace with a gas fire in place. There is a double bedroom to the front of the property, complete with built in wardrobes.

To the rear there is the second double bedroom, this leads



through to the conservatory, that overlooks the enclosed rear garden. The main bathroom benefits from a walk in shower, toilet, sink and bidet. The kitchen looks over the rear garden as well, complete with integrated oven and hob, there is space for a washing machine, and under counter fridge freezer.

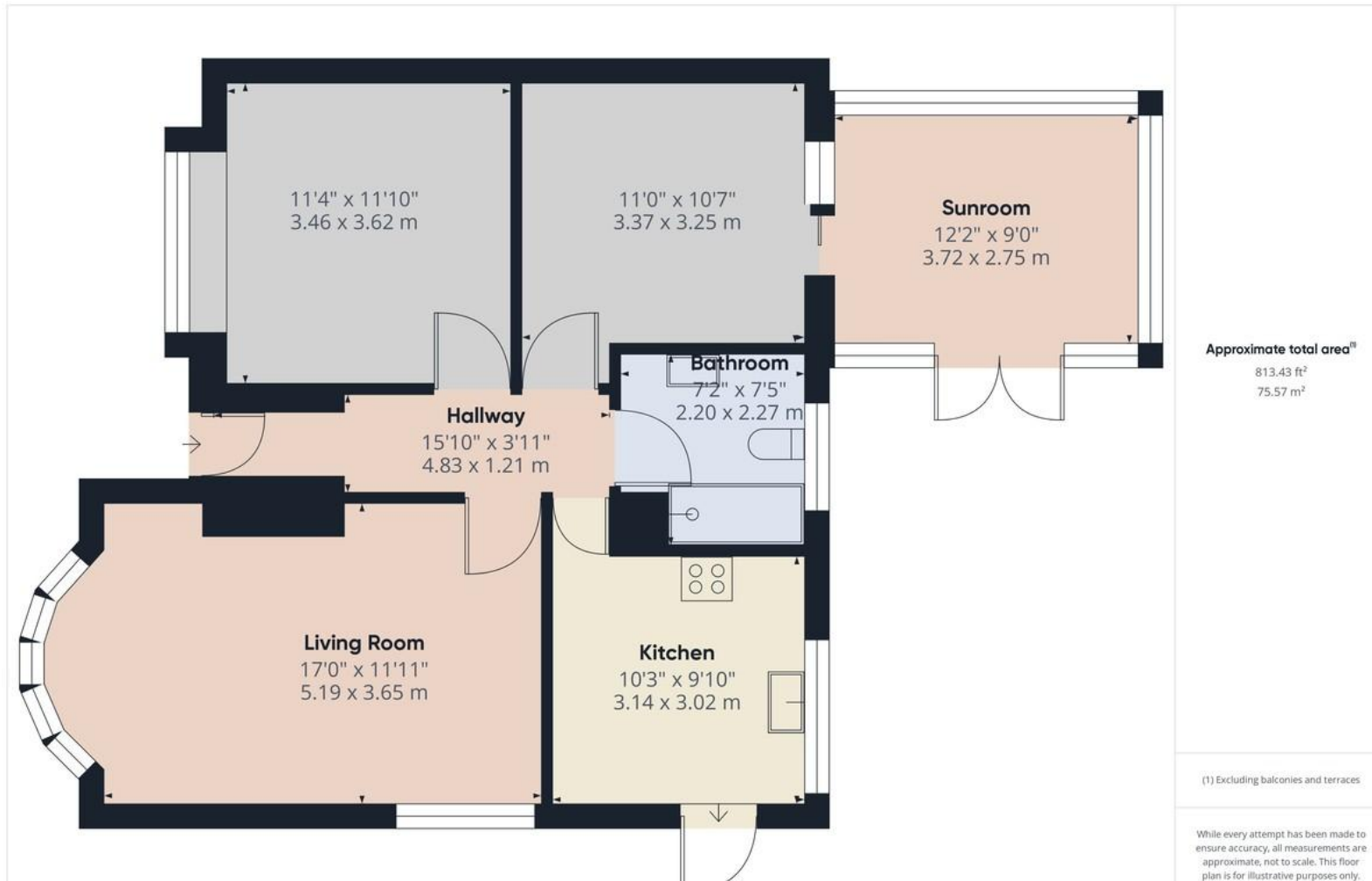
The property benefits from a driveway, a garage that would easily accommodate a car or can be used for storage, an enclosed rear garden, and a shed for even more storage.

The décor is neutral throughout, with quality cream carpets. Viewing is recommended to appreciate the lovely feel of this home, please register your interest today!



Score	Energy rating	Current	Potential
92+	A		
81-91	B		84 B
69-80	C		
55-68	D	63 D	
39-54	E		
21-38	F		





## Martin & Co Rotherham

5 Worry Goose Lane • Whiston • Rotherham • S60 4AA  
T: 01709 544982 • E: rotherham@martinco.com

# 01709 544982

<http://www.martinco.com>



**Accuracy:** References to the Tenure of a Property are based on information supplied by the Seller. The Agent has not had sight of the title documents. A Buyer is advised to obtain verification from their Solicitor. Items shown in photographs including but not limited to carpets, fixtures and fittings are not included unless specifically mentioned within the sales particulars. They may however be available by separate negotiation. Buyers must check the availability of any property and make an appointment to view before embarking on any journey to see a property. No person in the employment of the agent has any authority to make any representation about the property, and accordingly any information given is entirely without responsibility on the part of the agents, sellers(s) or lessors(s). Any property particulars are not an offer or contract, nor form part of one. **Sonic / Laser Tape:** Measurements taken using a sonic / laser tape measure may be subject to a small margin of error. **All Measurements:** All Measurements are Approximate. **Services Not tested:** The Agent has not tested any apparatus, equipment, fixtures and fittings or services and so cannot verify that they are in working order or fit for the purpose. A Buyer is advised to obtain verification from their Solicitor or Surveyor.