



OWL BARN Plot 1
4 bedroom house

OWL BARN

Plot 1

4 bedroom house

Ground Floor

Kitchen/Breakfast	6.06m* x 5.25m	19'11"* x 17'2"
Utility	3.25m x 1.67m	10'8" x 5'6"
Family Room	5.95m x 4.10m	19'6" x 13'5"
Lounge	5.95m x 4.40m*	19'6" x 14'5"*
Dining Hall	4.57m x 3.31m*	15'0" x 10'10"*
Pantry	1.84m x 1.67m	6'0" x 5'6"
Garages	5.72m x 5.37m	18'9" x 18'3"
WC	2.55m x 1.20m	8'4" x 3'11"

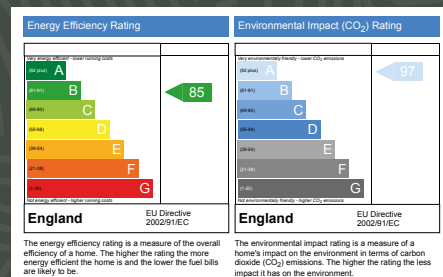
First Floor

Master Bedroom	4.34m* x 3.90m	14'3"* x 12' 9"
Master En Suite	3.02m x 2.67m	9'11" x 8'9"
Master Dressing Room	3.29m x 1.93m	10'9" x 6'4"
Bedroom 2	4.79m** x 3.02m	15'8"* x 9'10"
En-suite 2	3.02m x 1.18m	9'10" x 3'10"
Bedroom 3	5.25m** x 3.88m^	17'2"* x 12'9"*^
En suite 3	3.29m x 1.18m	10'9" x 3'10"
Bedroom 4	3.66m x 2.81m	12'0" x 9'2"
Bathroom	3.29m x 1.61m*	10'9" x 5'3"*

KEY

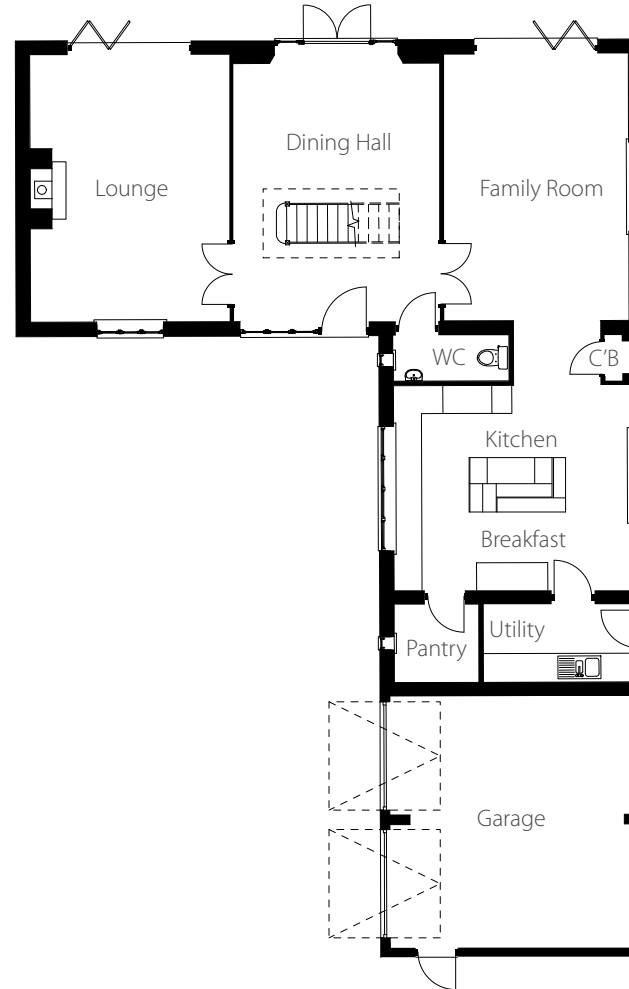
*Max	C'B - Cupboard
**Including wardrobe	AC - Airing Cupboard
^Reduced ceiling height	W'R - Wardrobe

EPC

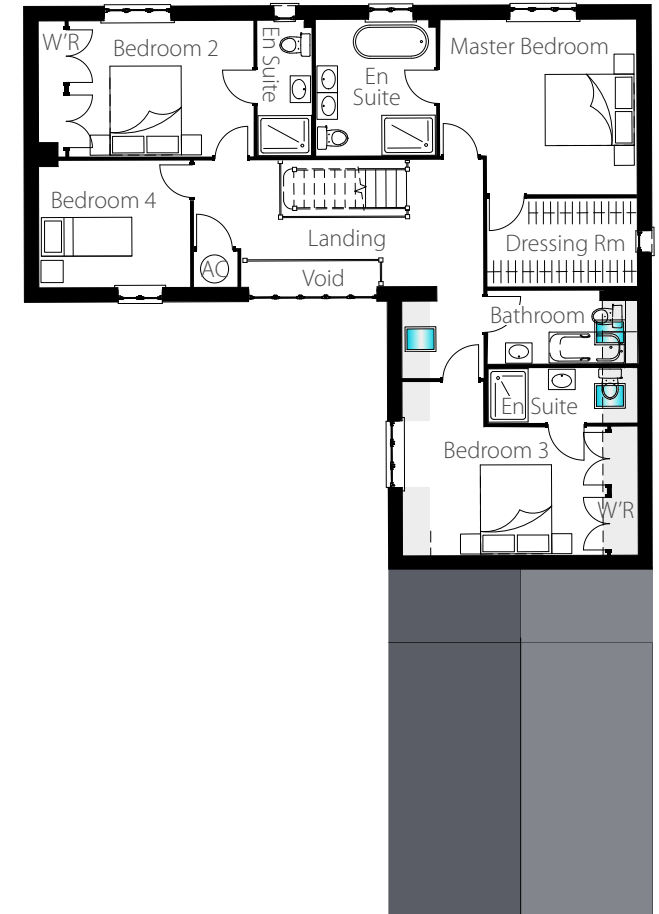


Total floor area: 235sq m - 2,529sq ft (excluding garage)

Ground Floor



First Floor



Please note: Hereward Homes policy is one of continuous development and improvement and we reserve the right to change the specification of properties without notice. The information within this brochure is carefully prepared but its contents do not form part or constitute representation of any warranty or contract. Dimensions are scaled from architect's drawings and although they are as accurate as practicable they may vary depending upon internal finishes. Each house type is shown at a different scale.



HEREWARD HOMES



CHAFFINCH HOUSE Plot 2
4 bedroom house

CHAFFINCH HOUSE

Plot 2

4 bedroom house

Ground Floor

Kitchen	5.35m* x 4.70m*	17'6"* x 15'5"*
Utility	1.95m x 1.95m	6'4" x 6'4"
Family/Dining Room	5.12m x 4.30m*	16'10"* x 14'1"*
Lounge	6.44m x 3.75m*	21'1" x 12'3"*
WC	1.95m x 1.05m	6'4" x 3'5"
Study	3.15m x 2.62m	10'4" x 8'7"

First Floor

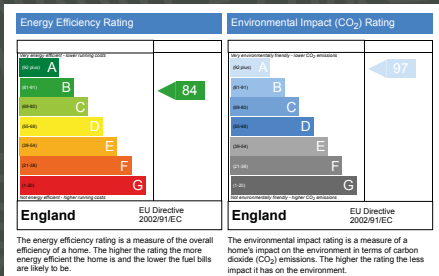
Master Bedroom	6.99m* x 4.30m*	22'11"* x 14'1"*
Master En Suite	2.42m x 1.94m	7'11" x 6'4"
Bedroom 2	3.92m** x 3.81m	12'10"* x 12'6"
En-suite 2	2.48m x 1.23m	8'1" x 4'0"
Bedroom 3	3.75m x 3.38m**	12'3" x 11'1"*
Bedroom 4	3.75m x 3.66m*	12'3" x 11'11"*
Bathroom	3.21m* x 2.01m*	10'6"* x 6'7"*

KEY

*Max
**Including wardrobe

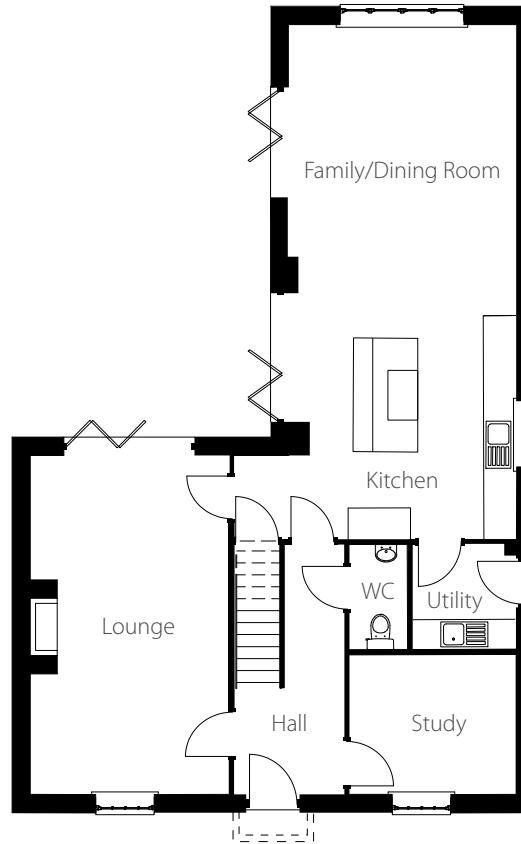
C'B - Cupboard
AC - Airing Cupboard
W'R - Wardrobe

EPC

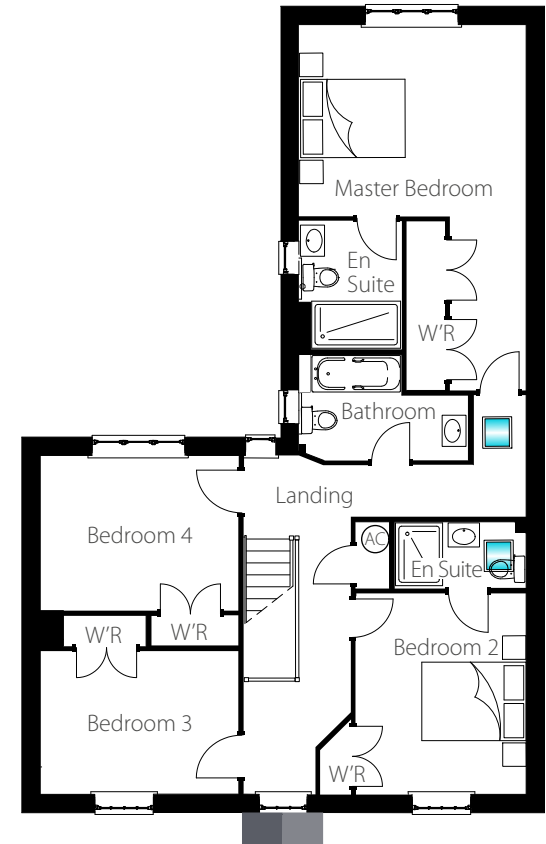


Total floor area: 192sq m - 2,066sq ft

Ground Floor



First Floor



Please note: Hereward Homes policy is one of continuous development and improvement and we reserve the right to change the specification of properties without notice. The information within this brochure is carefully prepared but its contents do not form part or constitute representation of any warranty or contract. Dimensions are scaled from architect's drawings and although they are as accurate as practicable they may vary depending upon internal finishes. Each house type is shown at a different scale.



HEREWARD HOMES



Plot 4

Plot 3

THE GOLD CREST Plot 3 • THE SKYLARK Plot 4

3 bedroom houses

THE GOLD CREST Plot 3

THE SKYLARK Plot 4

3 bedroom houses

Ground Floor

Kitchen/Dining	5.97m x 4.70m*	19'7" x 15'5"*
Utility	2.35m x 1.67m	7'8" x 5'6"
Sitting Room	4.86m x 3.74m	15'11" x 12'3"
WC	2.01m x 0.87m	6'7" x 2'10"

First Floor

Bedroom 2	5.97m** x 3.11m	19'7"** x 10'2"
Jack & Jill En suite	2.97m x 1.79m	9'8" x 5'10"
Bedroom 3	3.75m x 3.32m	12'3" x 10'10"

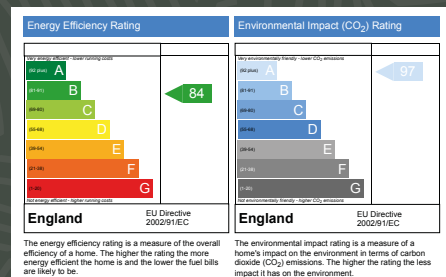
Second Floor

Master Bedroom	4.54m*^ x 4.22m	14'10"*^ x 13'10"
En Suite	2.35m x 1.89m^	7'8" x 6'2"^

KEY

- *Max
- **Including wardrobe
- ^Reduced ceiling height
- C'B - Cupboard
- AC - Airing Cupboard
- W'R - Wardrobe

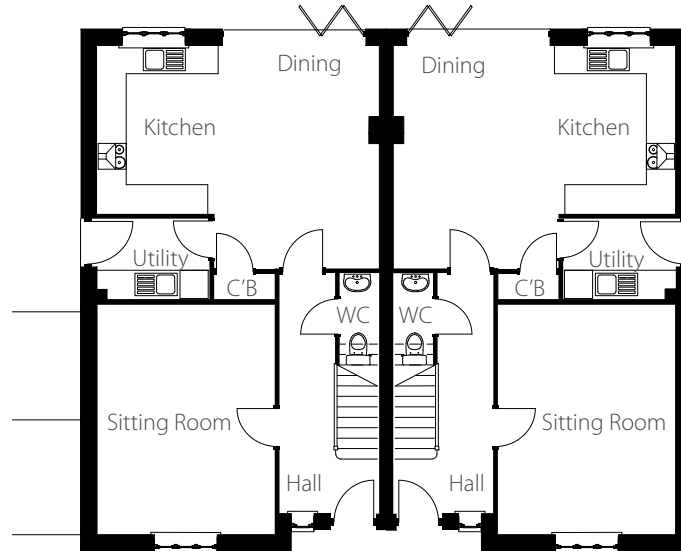
EPC



Please note: Hereward Homes policy is one of continuous development and improvement and we reserve the right to change the specification of properties without notice. The information within this brochure is carefully prepared but its contents do not form part or constitute representation of any warranty or contract. Dimensions are scaled from architect's drawings and although they are as accurate as practicable they may vary depending upon internal finishes. Each house type is shown at a different scale.

Total floor area: 166sq m - 1,787sq ft

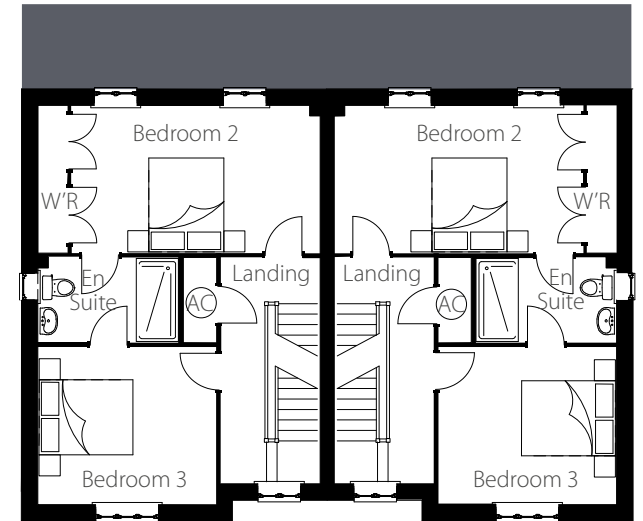
Ground Floor



Plot 4

Plot 3

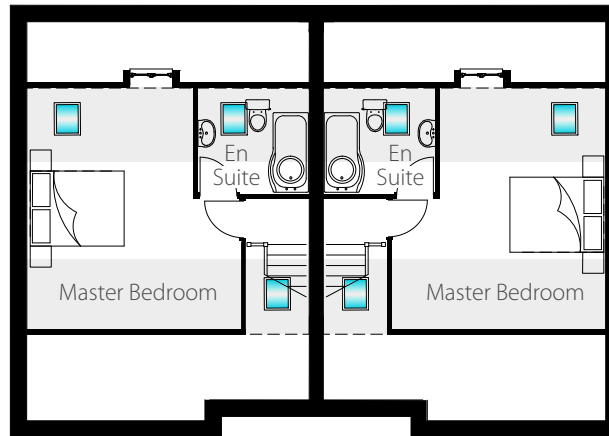
First Floor



Plot 4

Plot 3

Attic Floor



Plot 4

Plot 3

Reduced ceiling height



HEREWARD HOMES



NIGHTINGALE HOUSE Plot 5

3 bedroom house

NIGHTINGALE HOUSE

Plot 5

3 bedroom house

Ground Floor

Kitchen	5.35m* x 4.51m*	17'6"* x 14'9"*
Utility	2.01m x 1.96m	6'7" x 6'5"
Dining Room	4.30m x 2.93	14'1" x 9'7"
Lounge	6.44m x 3.75m*	21'1" x 12'3"*
WC	2.01m x 0.95m	6'7" x 3'1"

First Floor

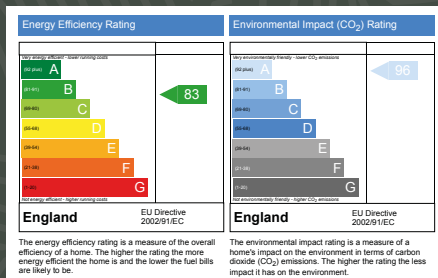
Master Bedroom	4.31m x 3.75m*	14'1" x 12'3"*
Master En Suite	2.62m x 2.01m	8'7" x 6'7"
Bedroom 2	4.34m* x 3.28m*	14'3"* x 10'9"*
En-suite 2	2.25m x 2.01m	7'4" x 6'7"
Bedroom 3	4.30m* x 4.13m**	14'1"* x 13'6"*
Bathroom	3.22m* x 1.92m*	6'0"* x 3'0"*

KEY

*Max
**Including wardrobe

C'B - Cupboard
AC - Airing Cupboard
W'R - Wardrobe

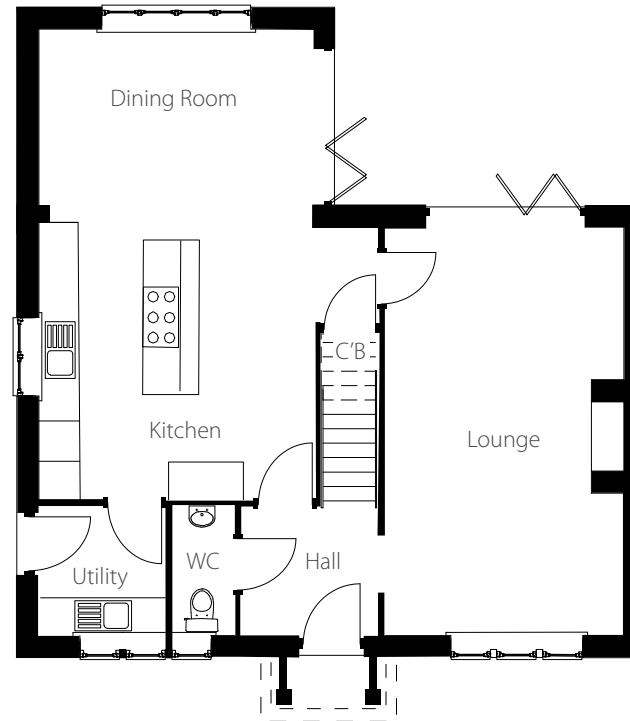
EPC



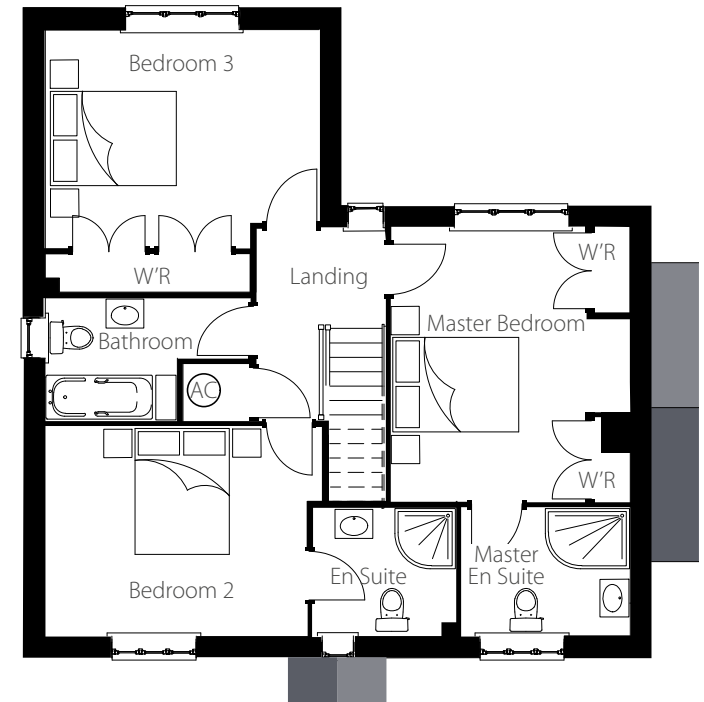
Please note: Hereward Homes policy is one of continuous development and improvement and we reserve the right to change the specification of properties without notice. The information within this brochure is carefully prepared but its contents do not form part or constitute representation of any warranty or contract. Dimensions are scaled from architect's drawings and although they are as accurate as practicable they may vary depending upon internal finishes. Each house type is shown at a different scale.

Total floor area: 148sq m - 1,593sq ft

Ground Floor



First Floor



HEREWARD HOMES



Plot 7

Plot 6

DOVE COTTAGE Plot 6 • WREN COTTAGE Plot 7

2 bedroom houses

DOVE COTTAGE Plot 6

WREN COTTAGE Plot 7

2 bedroom houses

Ground Floor

Living Room	4.41m* x 2.18m*	28'0"* x 14'2"*
Kitchen	3.36m* x 2.18m*	14'0"* x 7'2"*
WC	1.87m x 0.83m	6'2" x 2'9"

First Floor

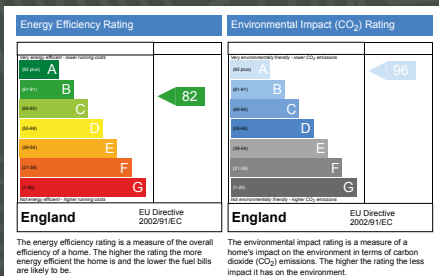
Master Bedroom	3.45m x 3.40m	11'4" x 11'2"
Bedroom 2	4.45m x 2.97m	14'7" x 9'7"
Bathroom	2.36m x 1.65m	7'9" x 5'5"

KEY

- *Max
- **Including wardrobe

- C'B - Cupboard
- AC - Airing Cupboard
- W'R - Wardrobe

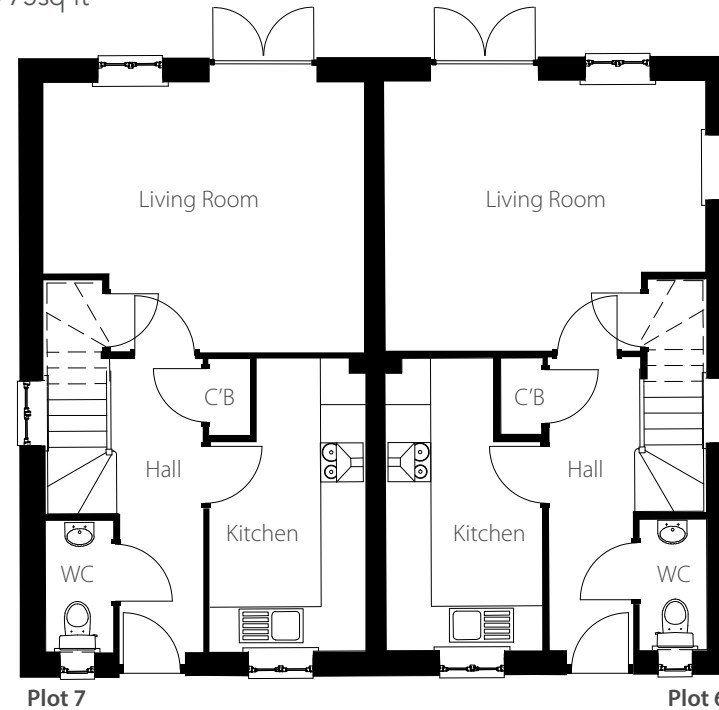
EPC



Please note: Hereward Homes policy is one of continuous development and improvement and we reserve the right to change the specification of properties without notice. The information within this brochure is carefully prepared but its contents do not form part or constitute representation of any warranty or contract. Dimensions are scaled from architect's drawings and although they are as accurate as practicable they may vary depending upon internal finishes. Each house type is shown at a different scale.

Total floor area: 72sq m - 775sq ft

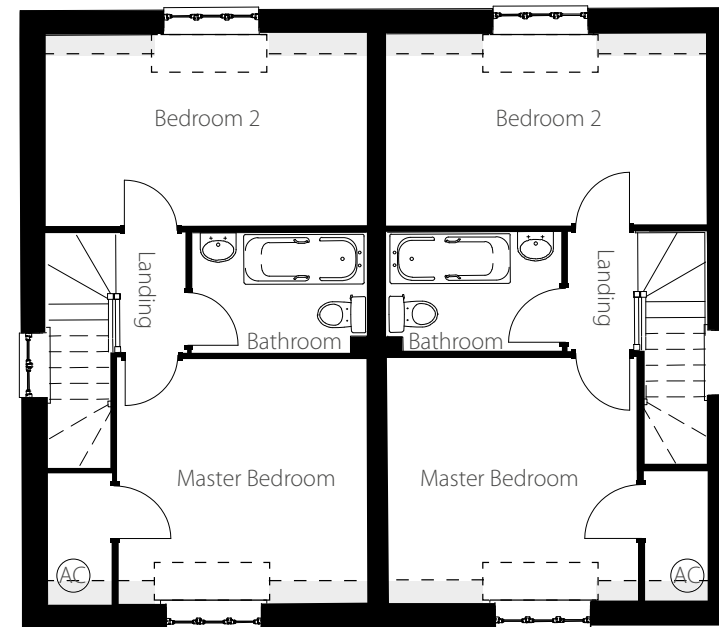
Ground Floor



Plot 7

Plot 6

First Floor



Plot 7

Plot 6

Reduced ceiling height



Plot 9

Plot 8

STARLINGS Plot 8 • BLACKBIRD Plot 9
2 bedroom bungalows

STARLINGS Plot 8 BULLFINCH Plot 9 2 bedroom bungalows

Ground Floor

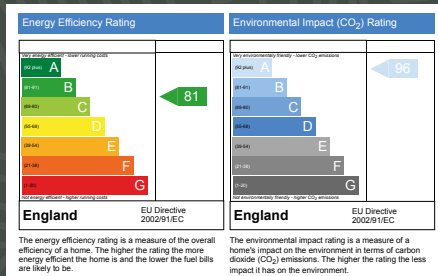
Sitting Room/Kitchen	9.29m x 3.79*	30'6" x 12'5"*
Bathroom	1.95m x 1.70m	6'5" x 5'7"
Master Bedroom	3.81m x 3.09m	12'6" x 10'2"
Bedroom 2	3.81m x 3.09m	12'6" x 10'2"

KEY

*Max
**Including wardrobe

C'B - Cupboard
AC - Airing Cupboard
W'R - Wardrobe

EPC



Please note: Hereward Homes policy is one of continuous development and improvement and we reserve the right to change the specification of properties without notice. The information within this brochure is carefully prepared but its contents do not form part or constitute representation of any warranty or contract. Dimensions are scaled from architect's drawings and although they are as accurate as practicable they may vary depending upon internal finishes. Each house type is shown at a different scale.

Total floor area: 66 sq m - 710sq ft



HEREWARD HOMES



BULLFINCH Plot 10
3 bedroom bungalow

BULLFINCH

Plot 10

3 bedroom bungalow

Ground Floor

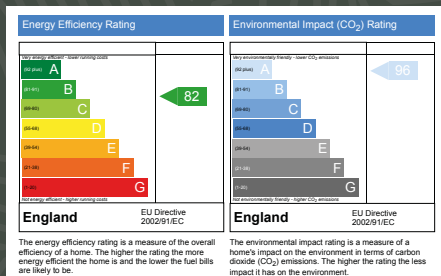
Kitchen	5.65m** x 4.75m*	18'6"*** x 15'7"*
Utility	3.49m* x 1.69m*	11'5" x 5'6"*
Sitting Room	5.65m x 4.55m	18'6" x 14'11"
Bathroom	3.59m** x 2.75m*	11'9"*** x 9'0"*
Master Bedroom	4.56m* x 3.75m*	14'11"*** x 12'3"*
Master En Suite	2.75m x 1.55m	9'0" x 5'1"
Bedroom 2	4.56m* x 3.45m*	14'11"*** x 11'3"*
Bedroom 3	3.42m x 3.15m	11'2" x 10'4"

KEY

*Max
**Including wardrobe

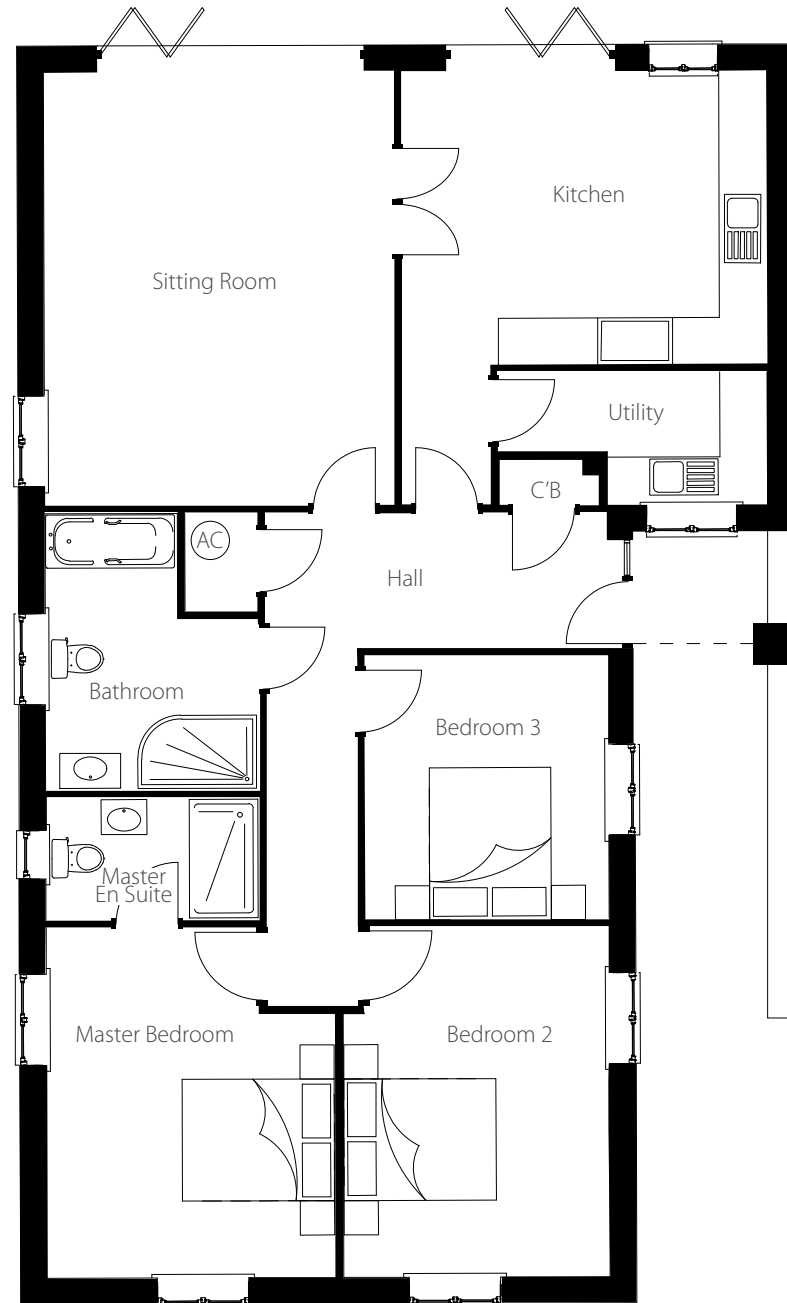
C'B - Cupboard
AC - Airing Cupboard
W'R - Wardrobe

EPC



Please note: Hereward Homes policy is one of continuous development and improvement and we reserve the right to change the specification of properties without notice. The information within this brochure is carefully prepared but its contents do not form part or constitute representation of any warranty or contract. Dimensions are scaled from architect's drawings and although they are as accurate as practicable they may vary depending upon internal finishes. Each house type is shown at a different scale.

Total floor area: 129sq m - 1,388sq ft



HEREWARD HOMES



KITE HOUSE Plot 11
3 bedroom house

KITE HOUSE

Plot 11

3 bedroom house

Ground Floor

Kitchen	5.35m* x 4.61m*	17'6"* x 15'1"*
Utility	2.01m x 1.99m	6'7" x 6'6"
Dining Room	4.30m x 2.83m	14'1" x 9'3"
Lounge	6.49m x 3.75m*	21'3" x 12'3"*
WC	2.01m x 0.95m	6'7" x 3'1"

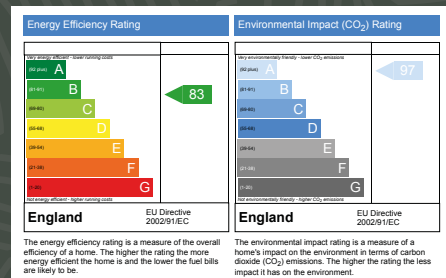
First Floor

Master Bedroom	4.31m x 3.75m*	14'1" x 12'3"*
Master En Suite	4.07m x 2.01m	13'4" x 6'7"
Bedroom 2	5.04m* x 3.28m	16'6"* x 10'9"
Bedroom 3	4.30m x 4.13m**	14'1" x 13'6"*
Bathroom	3.24m* x 2.05m*	10'7"* x 6'9"*

KEY

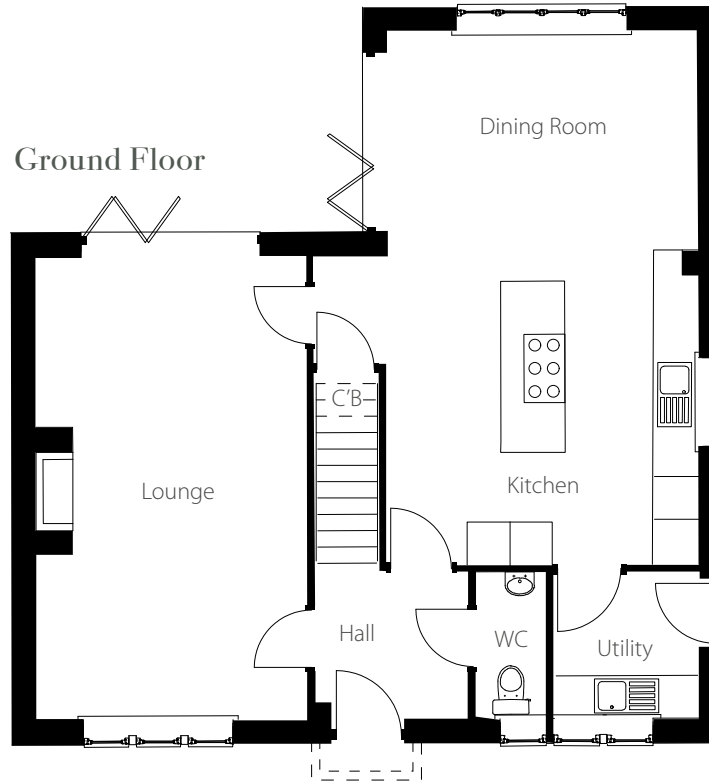
- *Max
- **Including wardrobe
- ^Reduced ceiling height
- C'B - Cupboard
- AC - Airing Cupboard
- W'R - Wardrobe

EPC

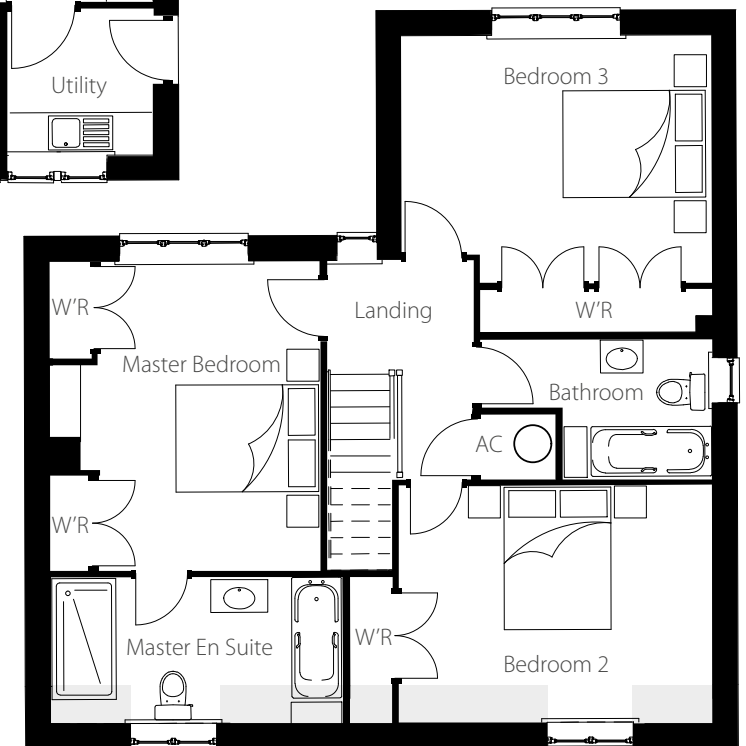


Please note: Hereward Homes policy is one of continuous development and improvement and we reserve the right to change the specification of properties without notice. The information within this brochure is carefully prepared but its contents do not form part or constitute representation of any warranty or contract. Dimensions are scaled from architect's drawings and although they are as accurate as practicable they may vary depending upon internal finishes. Each house type is shown at a different scale.

Total floor area: 148sq m - 1,593sq ft



First Floor



Reduced ceiling height



HEREWARD HOMES



HARRIER HOUSE Plot 12

4 bedroom house

HARRIER HOUSE

Plot 12

4 bedroom house

Ground Floor

Kitchen	5.50m x 2.50m	18'0" x 11'5"
Utility	2.35m x 1.90m	7'8" x 6'2"
Family/Dining Room	4.30m x 3.80m	14'1" x 12'5"
Sitting Room	6.45m x 4.24m	21'1" x 13'11"
Study	3.89m x 2.80m	12'9" x 9'2"
WC	1.50m x 1.46m	4'11" x 4'9"

First Floor

Master Bedroom	6.45m* x 4.24m*	21'1"* x 13'11"*
Master En Suite	2.71m* x 1.60m*	8'10"* x 5'3"*
Bedroom 2	5.54m x 3.35m	18'2" x 10'11"
En Suite 2	2.95m x 1.60m	9'8" x 5'2"
Bedroom 3	5.06m* x 4.0m*	16'7"* x 13'1"*
En Suite 3	2.95m x 1.31m	9'8" x 4'3"

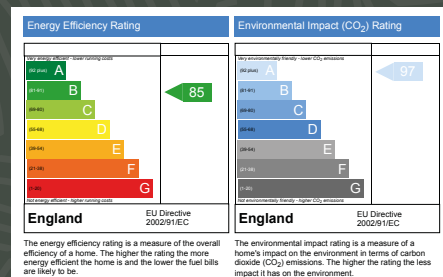
Second Floor

Bedroom 4	6.71m x 3.82m^	22'0" x 12'6" ^
Bathroom	2.86m* x 2.81m*	9'4"* x 9'2"

KEY

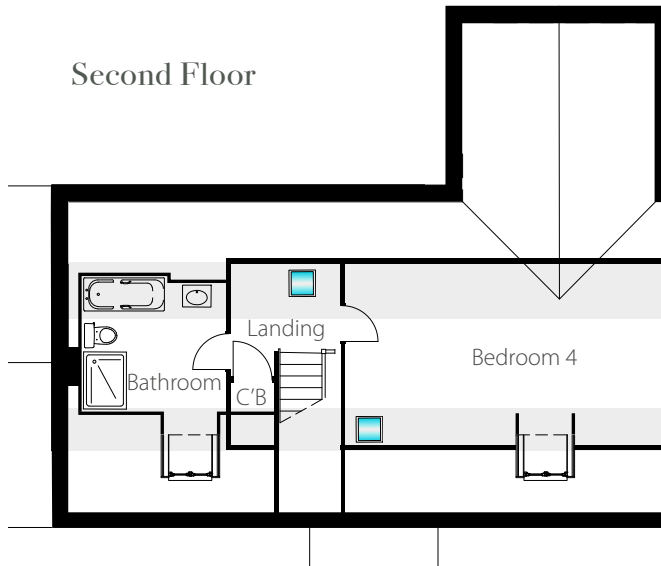
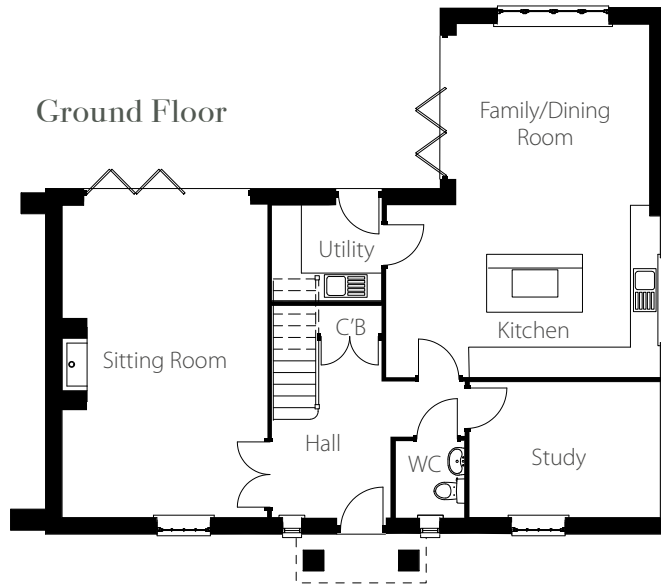
- *Max
- **Including wardrobe
- ^Reduced ceiling height
- C'B - Cupboard
- AC - Airing Cupboard
- W'R - Wardrobe

EPC



Please note: Hereward Homes policy is one of continuous development and improvement and we reserve the right to change the specification of properties without notice. The information within this brochure is carefully prepared but its contents do not form part or constitute representation of any warranty or contract. Dimensions are scaled from architect's drawings and although they are as accurate as practicable they may vary depending upon internal finishes. Each house type is shown at a different scale.

Total floor area: 237sq m - 2,551sq ft



Reduced ceiling height



HEREWARD HOMES



KESTREL HOUSE Plot 13

3 bedroom house

KESTREL HOUSE

Plot 13

3 bedroom house

Ground Floor

Kitchen	5.35m* x 4.63m*	17'6"* x 15'2"*
Utility	1.99m x 1.95m	6'6" x 6'4"
Dining Room	4.30m x 2.76m	14'1" x 9'1"
Lounge	6.32m x 3.75m*	20'9" x 12'3"*
WC	1.95m x 0.95m	6'4" x 3'1"

First Floor

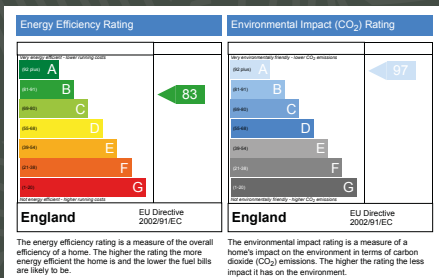
Master Bedroom	5.61m* x 4.05m*	18'5"* x 13'3"*
Master En Suite	3.54m x 2.15m^	11'7" x 7'0"*^
Dressing Room	2.15m* x 1.93m^	7'0"* x 6'4"^
Bedroom 2	4.20m x 3.75m*	13'9" x 12'3"*
En Suite 2	3.75m x 2.00m^	12'3" x 6'6"^
Bedroom 3	5.35m x 3.28m**^	17'6" x 10'9"***^
Bathroom	3.22m x 1.86m	10'6" x 6'1"
Study/Bedroom 4	4.30m x 3.03m	14'1" x 9'11"

KEY

- *Max
- **Including wardrobe
- ^Reduced ceiling height

- C'B - Cupboard
- AC - Airing Cupboard
- W'R - Wardrobe

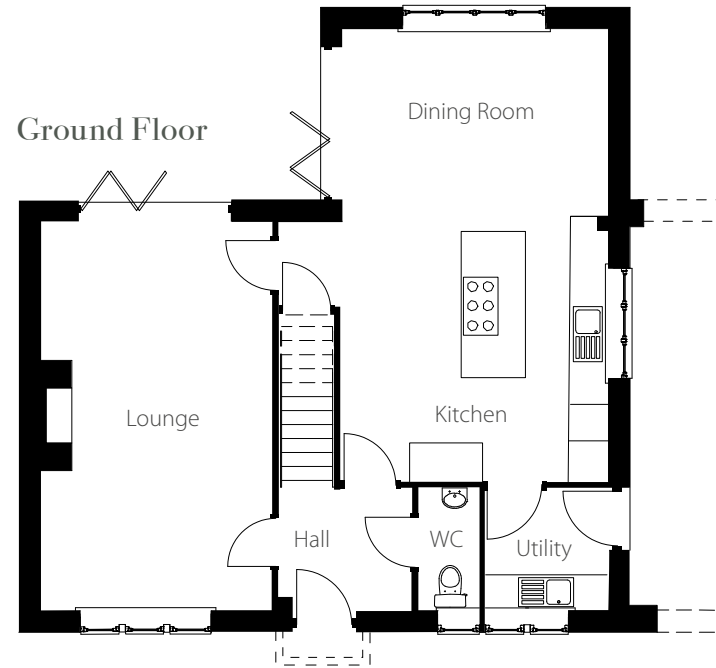
EPC



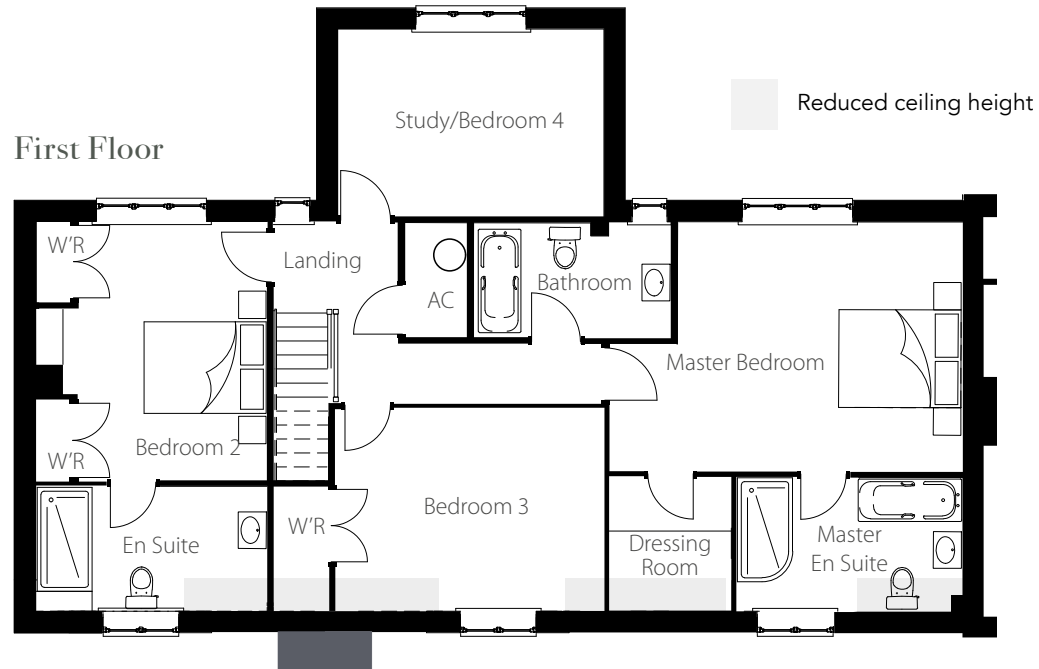
Please note: Hereward Homes policy is one of continuous development and improvement and we reserve the right to change the specification of properties without notice. The information within this brochure is carefully prepared but its contents do not form part or constitute representation of any warranty or contract. Dimensions are scaled from architect's drawings and although they are as accurate as practicable they may vary depending upon internal finishes. Each house type is shown at a different scale.

Total floor area: 183sq m - 1,970sq ft

Ground Floor



First Floor



HEREWARD HOMES



FALCON HOUSE Plot 14
4 bedroom house with studio

FALCON HOUSE

Plot 14

4 bedroom house & studio

Ground Floor

Kitchen/Breakfast	5.58m* x 4.70m	18'3"* x 15'5"
Utility	2.55m x 1.82m	8'4" x 6'0"
Family Room	5.85m* x 3.25m*	19'2"* x 10'8"*
Living Room	5.25m x 4.75m	17'2" x 15'7"
WC	1.85m x 1.04m	6'0" x 3'5"

First Floor

Master Bedroom	5.25m* x 3.28m*	17'2"* x 10'9"*
Master En Suite	2.77m* x 2.11m*	9'1"* x 6'11"*
Master Dressing Room	2.36m* x 1.35m	7'8"* x 4'5"
Bedroom 2	4.55m* x 4.18m*	14'11"* x 13'8"*
Bedroom 3	3.59m* x 3.05m*	11'9"* x 10'0"*
Jack & Jill En Suite	2.76m x 2.07m	8'11" x 6'9"

Second Floor

Bedroom 4	4.30m* x 3.37m*^	14'2"* x 9'7"*^
Bathroom	3.29m* x 2.76m*^	10'9"* x 9'11"*^

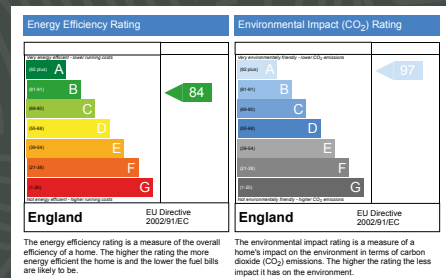
Garage/Studio

Garage	6.65m x 5.50m*	21'10" x 18'11"*
Studio	6.60m* x 2.43m	21'7" x 8'0"

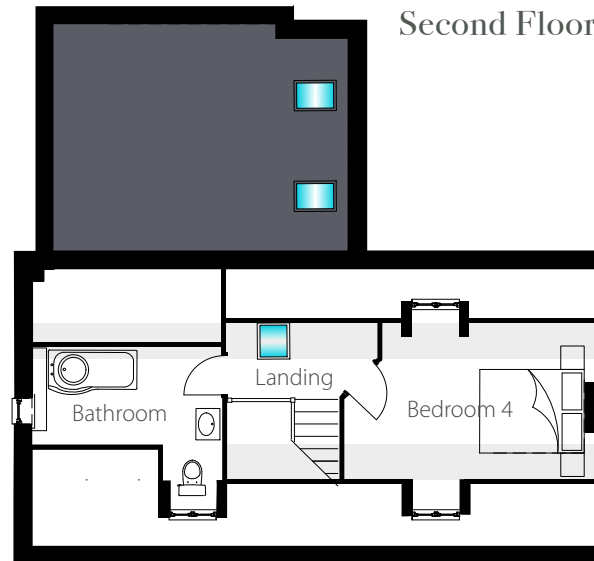
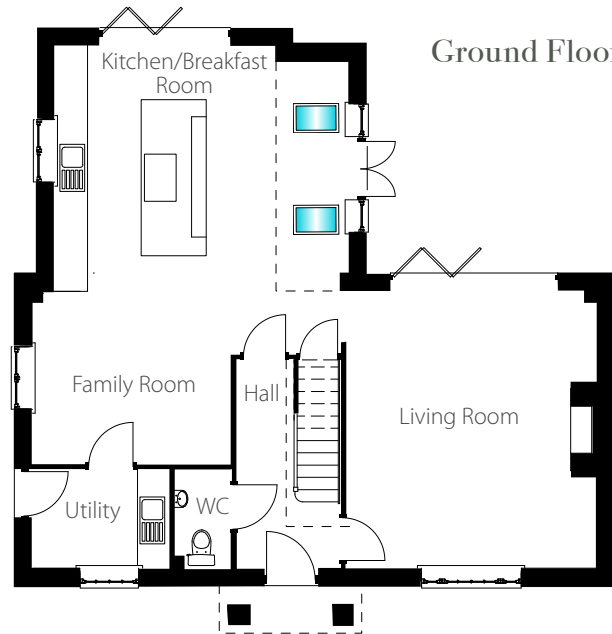
KEY

- *Max
- **Including wardrobe
- ^Reduced ceiling height
- C'B - Cupboard
- AC - Airing Cupboard
- W'R - Wardrobe
- ◆ Including WC/Shower Room

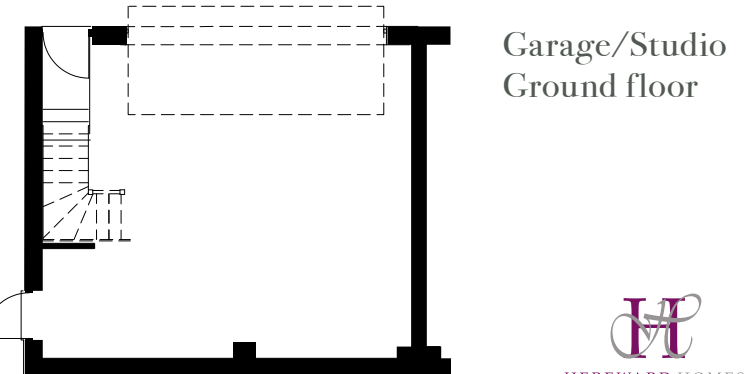
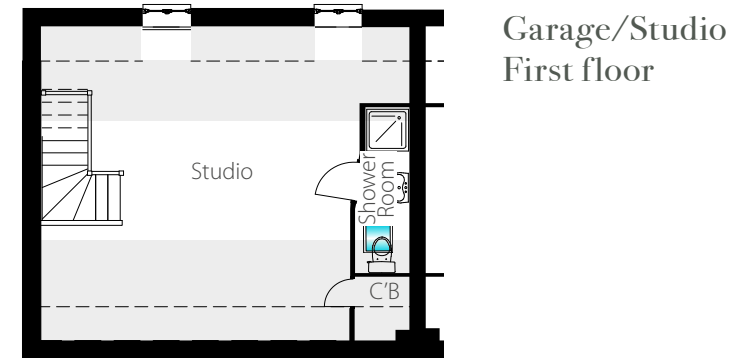
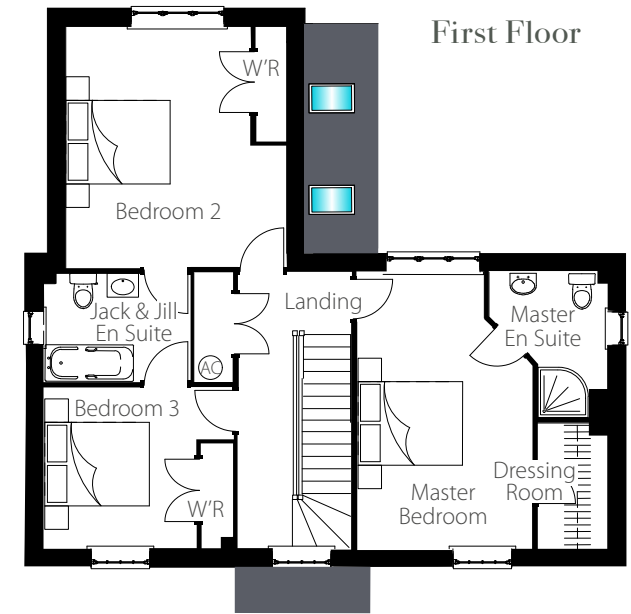
EPC



Total floor area: 222sq m - 2,390sq ft including studio



Reduced ceiling height



Please note: Hereward Homes policy is one of continuous development and improvement and we reserve the right to change the specification of properties without notice. The information within this brochure is carefully prepared but its contents do not form part or constitute representation of any warranty or contract. Dimensions are scaled from architect's drawings and although they are as accurate as practicable they may vary depending upon internal finishes. Each house type is shown at a different scale.



HEREWARD HOMES



OSPREY HOUSE Plot 15

4 bedroom house with studio

OSPREY HOUSE

Plot 15

4 bedroom house & studio

Ground Floor

Kitchen	5.3m* x 5.15m*	17'4"* x 16'10"*
Breakfast Room	4.77m* x 3.90m	15'7"* x 12'9"
Utility	3.90m x 1.85m	12'9" x 6'0"
Family Room	5.55m* x 3.40m*	18'2"* x 11'1"*
Living Room	6.50m x 4.10m	21'3" x 13'5"
WC	1.49m x 1.45m	4'11" x 4'9"

First Floor

Master Bedroom	5.30m**^ x 5.15m**^	17'4"* x 16'10"*^
En Suite	3.06m* x 1.39m**^	10'0"* x 4'6"*^
Bedroom 2	5.2m* x 3.19m**^	17'0"* x 10'5"*^
En Suite 2	3.42m x 1.58m^	11'2" x 5'2"
Bedroom 3	4.62m x 3.88m**^	15'11" x 10'9"*^
Bedroom 4	4.15m** x 3.16m**^	13'7"* x 9'5"*^
Bathroom	2.06m x 1.90m^	6'9" x 6'2"

Garage/Studio

Garage	6.65m x 5.50m*	21'10" x 18'11"*
Studio	6.60m* x 2.43m	21'7" x 8'0"

KEY

*Max

**Including wardrobe

^Reduced ceiling height

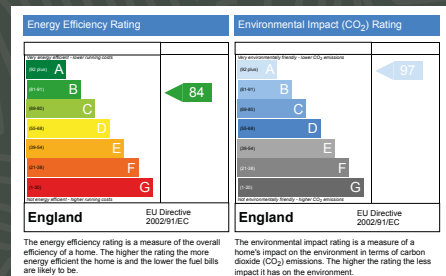
C'B - Cupboard

AC - Airing Cupboard

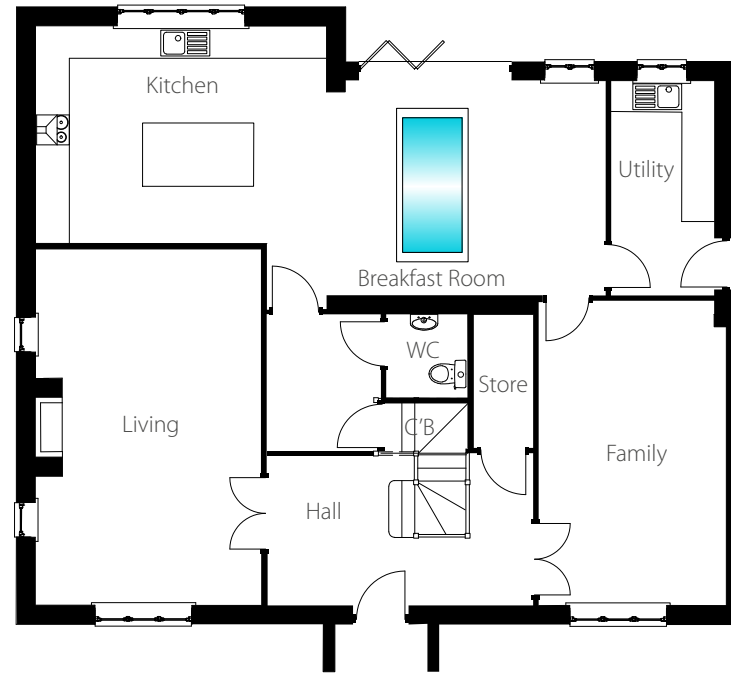
W'R - Wardrobe

♦ Including WC/Shower Room

EPC

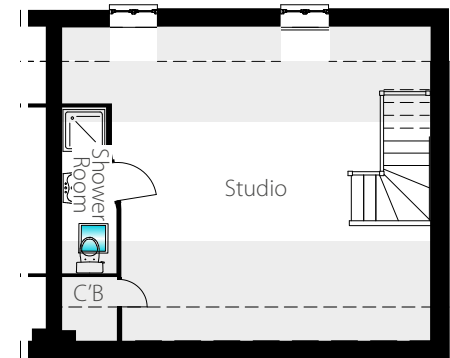


Ground Floor

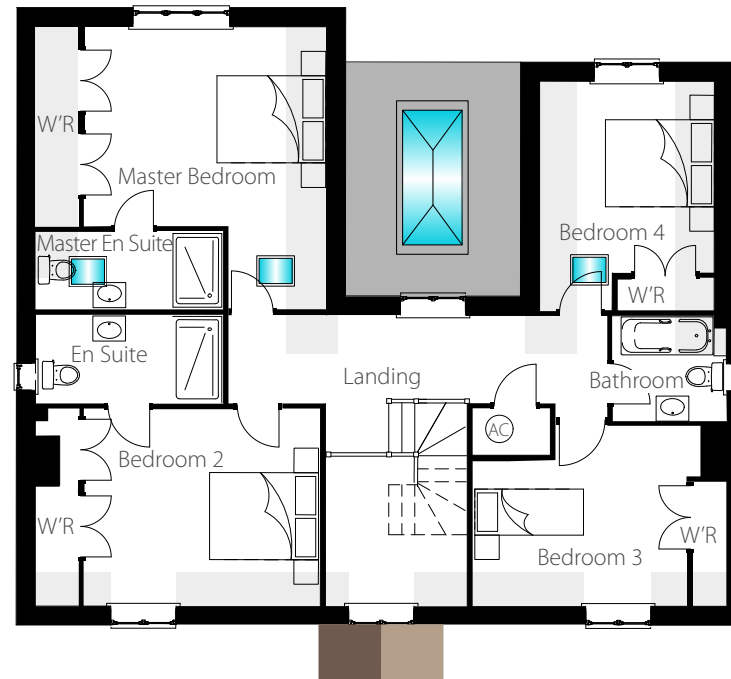


Total floor area: 268sq m - 2,885sq ft

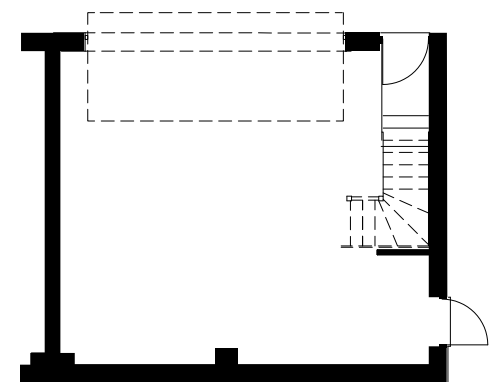
Garage/Studio First floor



First Floor



Garage/Studio Ground floor



Reduced ceiling height

Please note: Hereward Homes policy is one of continuous development and improvement and we reserve the right to change the specification of properties without notice. The information within this brochure is carefully prepared but its contents do not form part or constitute representation of any warranty or contract. Dimensions are scaled from architect's drawings and although they are as accurate as practicable they may vary depending upon internal finishes. Each house type is shown at a different scale.



HEREWARD HOMES