




 2
Bedrooms

 2
Bathrooms



A stunning refurbishment, this two bedroom, two bath apartment has immaculate contemporary style enhanced by its bright southerly aspect.

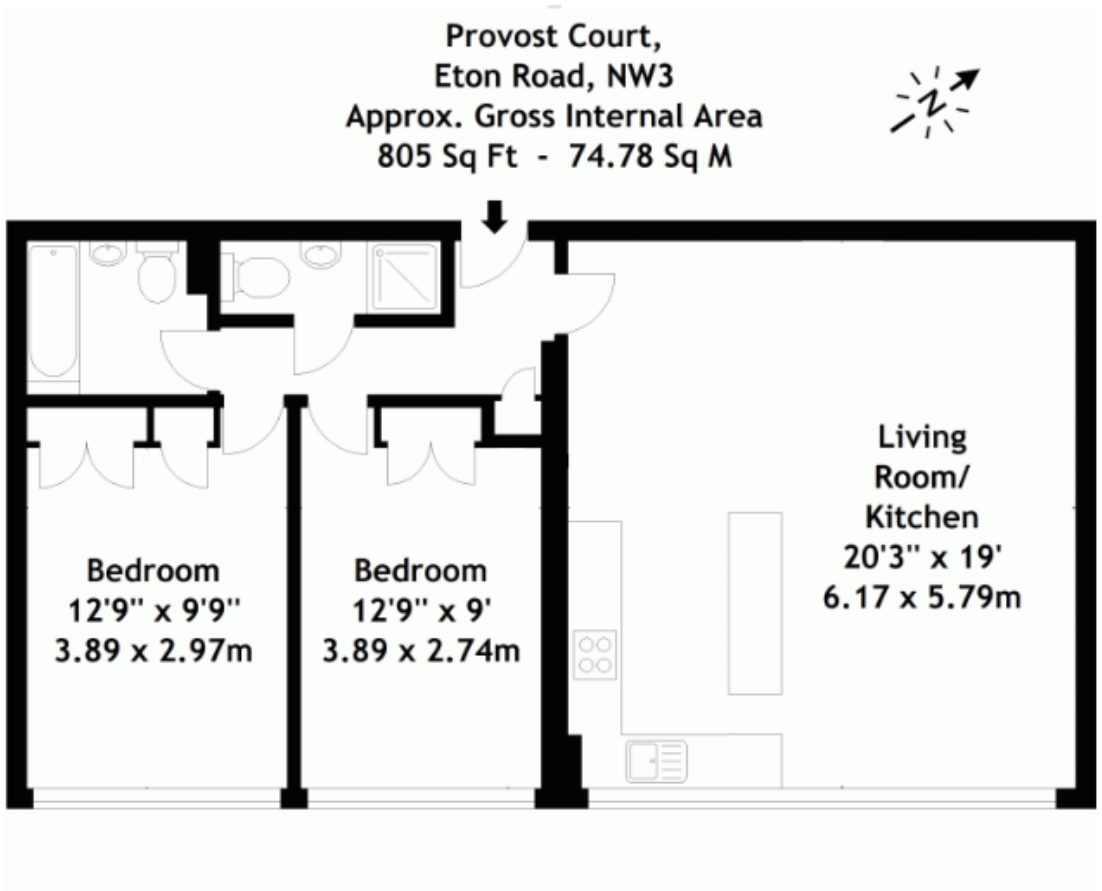
- Luxury Two Bedroom Apartment
- Fantastic Location
- Stunning Views
- Kitchen-Diner
- Video Entry Phone
- Well Presented Purpose Built Blocks
- Elevator in Building
- Spacious Throughout

Desirable Residences Estate Agents are pleased to present this absolutely outstanding two-bedroom apartment on the fifth floor (with lift) of this well-presented purpose-built development in the heart of Belsize Park. The apartment has been renovated to a modern design and finished to a high specification throughout. This generously proportioned property comprises of a large kitchen/reception room which offers wonderful southern facing views encompassing the London skyline and the historic St Saviour's Church. The equally apportioned two double bedrooms come with fitted wardrobes, and the property has two luxury bathrooms. This apartment offers great storage and is offered furnished.

Council Tax Band F

Available Mid March

The Property if offered Furnished



Energy Efficiency Rating

	Current	Potential
Very energy efficient - lower running costs		
(92-100) A		
(81-91) B		
(69-80) C		74
(55-68) D	64	
(39-54) E		
(21-38) F		
(1-20) G		
Not energy efficient - higher running costs		
England, Scotland & Wales		EU Directive 2002/91/EC

