



Cross London Street, New Whittington, Chesterfield, Derbyshire S43 2AG

 2  1  1  D

£700 Per Month

PINWOOD



Cross London Street New Whittington Chesterfield Derbyshire S43 2AG



£700 Per Month

**2 bedrooms
1 bathrooms
1 receptions**

- New Décor to the Kitchen, Lounge and Bathroom
- Modern Kitchen Diner with Integrated Oven Hob and Extractor
- Located in the Heart of the Village - Close to all the Amenities
- Water Rates Included in the Rent - Gas Central Heating and uPVC Double Glazing - Council Tax Band A
- Pleasant South Facing Rear Garden
- Ground Floor W.C/Cloakroom - Two Double Bedrooms
- Modern Bathroom with White Suite and Mixer Shower
- Cosy Reception Room with Feature Fireplace
- On Street Parking to the Front of the Property is Available
- Short Drive to the Towns of Chesterfield, Dronfield, Eckington and City of Sheffield

NEW DECOR TO THE KITCHEN, LOUNGE AND BEDROOMMM TWO.... Welcome to this charming terraced house located on Cross London Street in the village of New Whittington, Chesterfield, Derbyshire.

Upon entering, you are greeted by a cosy reception room, perfect for relaxing or entertaining guests. The property boasts two lovely DOUBLE bedrooms, ideal for a single person, couple or a small family with a guest room/home office combination. The modern bathroom features a sleek white suite and a convenient mixer shower adding a touch of luxury to your daily routine.

One of the highlights of this property is the modern dining kitchen, providing a stylish space to prepare and enjoy meals with your loved ones. With gas central heating and uPVC double glazing, you can stay warm and comfortable throughout the year while keeping energy costs down.

Step outside to discover the fully enclosed south facing rear garden, complete with decking where you can unwind with a cup of tea or host a summer barbecue. The garden offers a private oasis in the heart of the village, perfect for enjoying the outdoors in peace.

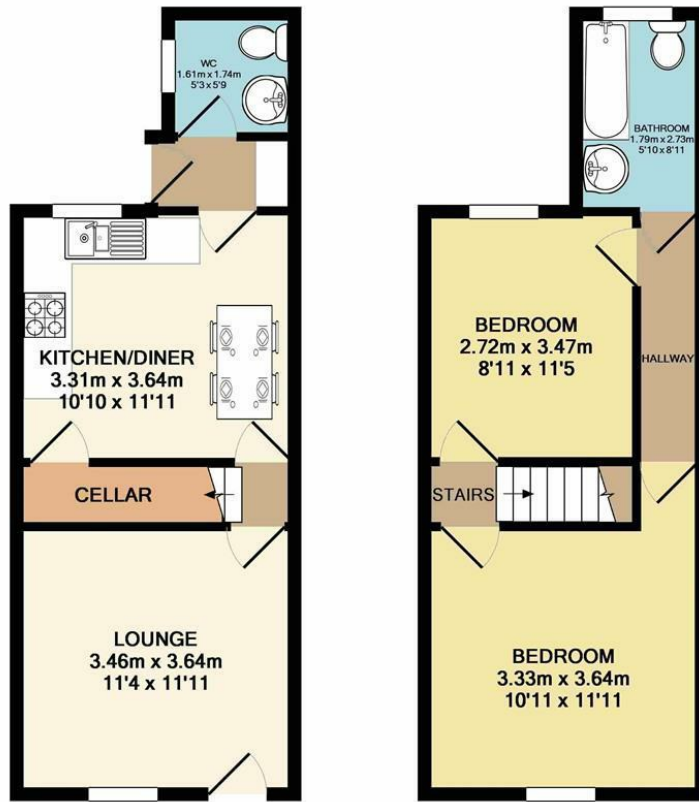
Located in the charming village of New Whittington, this property offers a peaceful retreat while being conveniently close to local amenities. Whether you fancy a leisurely stroll to the nearby shops or a quick drive to explore the surrounding Derbyshire countryside, this location provides the best of both worlds.

Don't miss out on the opportunity to make this delightful terraced house your new home. Contact us today to arrange a viewing and start envisioning your life in this wonderful property on Cross London Street. Water Rates included in the rent.

DISCLAIMER

These particulars do not constitute part or all of a contract. While we endeavour to make our particulars fair, accurate and reliable, they are only a general guide to the property the photos are for reference purpose only, the white goods advertised may not be in situ and and if there are any points which are of particular importance to you or any particular white goods required please check with the office and we will be pleased to check the position on these.





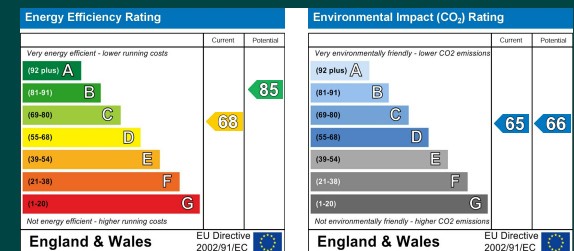
GROUND FLOOR
APPROX. FLOOR
AREA 32.2 SQ.M.
(346 SQ.FT.)

1ST FLOOR
APPROX. FLOOR
AREA 31.8 SQ.M.
(343 SQ.FT.)

TOTAL APPROX. FLOOR AREA 64.0 SQ.M. (689 SQ.FT.)

Whilst every attempt has been made to ensure the accuracy of the floor plan contained here, measurements of doors, windows, rooms and any other items are approximate and no responsibility is taken for any error, omission, or mis-statement. This plan is for illustrative purposes only and should be used as such by any prospective purchaser. The services, systems and appliances shown have not been tested and no guarantee as to their operability or efficiency can be given

Made with Metropix ©2018



Mansfield branch
24 Albert Street
Mansfield, NG1
01623 621001

Clowne branch
26 Mill Street,
Clowne, S45 4JN
01246 810519

Clay Cross branch
20 Market Street,
Clay Cross, S45 9JE
01246 251194

Chesterfield branch
33 Holywell Street,
Chesterfield, S41 7SA
01246 221039

PINEWOOD

