



Devonshire Park, Devonshire Street, Brimington, Chesterfield S43 1GA

 1  1  1  E

£750 Per Calendar Month

PINEWOOD



**Devonshire Park
Devonshire Street
Brimington
Chesterfield
S43 1GA**



£750 Per Calendar Month

**1 bedrooms
1 bathrooms
1 receptions**

- One Bedroom Open Plan Mezzanine Apartment -Over Two Floors
- Secure Gated Car Park- Allocated Space - Communal Gardens
- En suite Shower Room to Bedroom
- Modern Kitchen Area With Inetrgrated Washing Machine, Fridge Freezer, Oven, Hob and Extractor
- Gas Boiler Central Heating - Council Tax Band A - Bond £836
- Part Furnished/Unfurnished
- Exclusive Development Set in the Heart of the Suburb of Brimington - Converted School Building
- Spiral Staircase to the Mezzanine Double Bedroom - With Vaulted Ceiling
- Kitchen Lounge Diner - Open Plan with Neutral Décor and Wooden Floorings
- Excellent For Transport Links and Main Commuter Routes





****OPEN PLAN LIVING IN A STUNNING LUXURY APARTMENT**PART FURNISHED****This is a ONE DOUBLE bedroom apartment with over 685 sq ft of accommodation including a mezzanine level, situated in a converted junior school in the village of Brimington. Close to local amenities and within easy access of Chesterfield Town Centre, local amenities, M1 Motorway and Train Station. This stunning apartment benefits from secure gated allocated off street parking. Comprising of its own entrance door on the ground floor, open plan living area with a feature fireplace and exposed brickwork, modern kitchen with integrated washing machine, fridge freezer, oven, hob and extractor and spiral staircase leading up to a double bedroom set on the mezzanine level with a modern ensuite shower room with white suite and shower cubicle. Such a stunning property! Viewings are highly recommended.

****VIRTUAL VIDEO TOUR AVAILABLE - TAKE A LOOK AROUND****

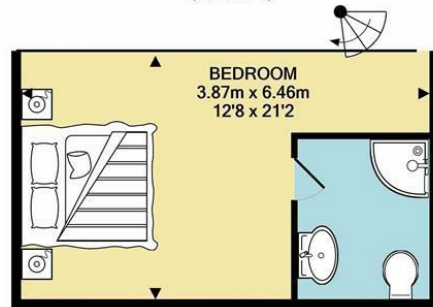
****PLEASE CALL PINWOOD PROPERTIES FOR MORE INFORMATION OR TO BOOK YOUR VIEWING!****

Disclaimer

These particulars do not constitute part or all of a contract. While we endeavour to make our particulars fair, accurate and reliable, they are only a general guide to the property the photos are for reference purpose only, the white goods advertised may not be in situ and and if there are any points which are of particular importance to you or any particular white goods required please check with the office and we will be pleased to check the position on these



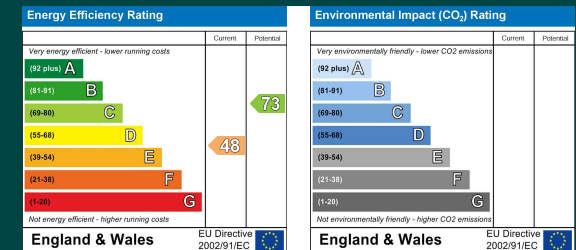
GROUND FLOOR
APPROX. FLOOR
AREA 38.9 SQ.M.
(419 SQ.FT.)



1ST FLOOR
APPROX. FLOOR
AREA 24.7 SQ.M.
(266 SQ.FT.)

TOTAL APPROX. FLOOR AREA 63.6 SQ.M. (685 SQ.FT.)

Whilst every attempt has been made to ensure the accuracy of the floor plan contained here, measurements of doors, windows, rooms and any other items are approximate and no responsibility is taken for any error, omission, or mis-statement. This plan is for illustrative purposes only and should be used as such by any prospective purchaser. The services, systems and appliances shown have not been tested and no guarantee as to their operability or efficiency can be given
Made with Metropix ©2020.



Mansfield branch
24 Albert Street
Mansfield, NG1
01623 621001

Clowne branch
26 Mill Street,
Clowne, S43 4JN
01246 810519

Clay Cross branch
20 Market Street,
Clay Cross, S45 9JE
01246 251194

Chesterfield branch
33 Holywell Street,
Chesterfield, S41 7SA
01246 221039

PINEWOOD

