



Hazel Avenue, Pilsley, Chesterfield, Derbyshire S45 8DX

 **3**  **1**  **0**  **C**

£750 Per Month

PINWOOD



**Hazel Avenue
Pilsley
Chesterfield
Derbyshire
S45 8DX**



£750 Per Month

**3 bedrooms
1 bathrooms
0 receptions**

- SEMI RURAL VILLAGE LOCATION - CUL DE SAC
- DRIVEWAY PARKING FOR ONE CAR
- FULLY ENCLOSED REAR GARDEN WITH LAWN AND PATIO
- EASY ACCESS TO THE M1 MOTORWAY
- GAS CENTRAL HEATING - UPVC DOUBLE GLAZING - COUNCIL TAX BAND A
- NEUTRAL DECOR AND GREY CARPETS/FLOORING
- MODERN BATHROOM WITH WHITE SUITE
- THROUGH LOUNGE DINER
- BUILT IN WARDROBES TO BEDROOM ONE
- CLOSE TO ALL THE LOCAL VILLAGE AMENITIES

CUL DE SAC VILLAGE LOCATIONWelcome to this charming mid-terrace three bed house located on the peaceful Hazel Avenue in the village of Pilsley, Chesterfield, Derbyshire. Situated in a cul-de-sac, this property offers a tranquil and safe environment, perfect for families or those seeking a quiet retreat.

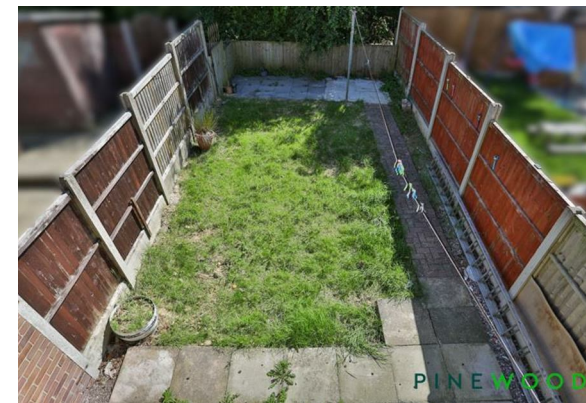
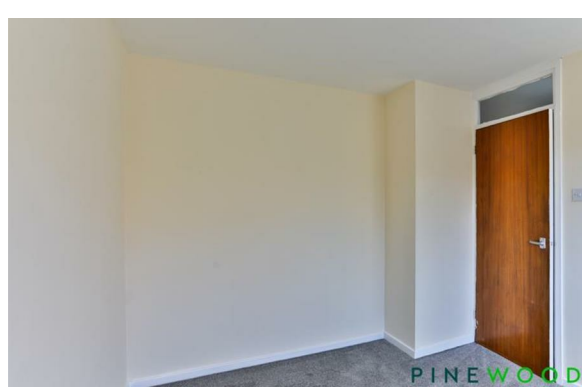
The property comprises a porch, through lounge diner with sliding doors out to the rear garden, store for coats/shoes and a modern kitchen with integrated oven, hob and extractor and 1 1/2 bowl sink. Upstairs has two double bedrooms, one with built in wardrobes and single bedroom, the bathroom has a white suite with mixer shower over bath.

The semi-rural setting provides a wonderful blend of countryside living with the convenience of easy access to the M1 motorway, making commuting a breeze.

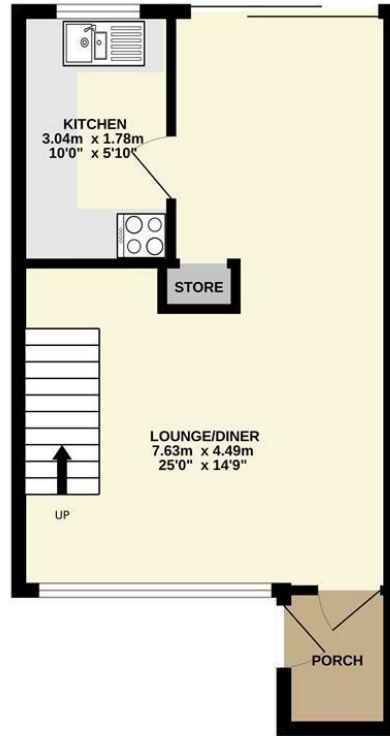
One of the standout features of this property is the off-road parking for one car, ensuring you never have to worry about finding a space for your vehicle. Additionally, the fully enclosed rear garden offers a private outdoor space where you can relax, entertain guests, or simply enjoy the fresh air.

Don't miss the opportunity to make this lovely house your home. Contact us today to arrange a viewing and experience the charm of Hazel Avenue for yourself. uPVC Double Glazing and Gas Central Heating

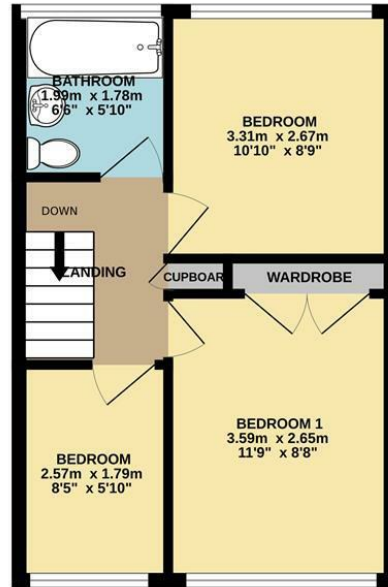
****VIDEO TOUR - TAKE A LOOK AROUND****



GROUND FLOOR
33.5 sq.m. (361 sq.ft.) approx.

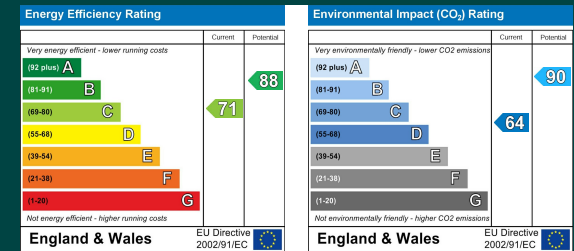


1ST FLOOR
30.8 sq.m. (332 sq.ft.) approx.



TOTAL FLOOR AREA: 64.3 sq.m. (692 sq.ft.) approx.

Whilst every attempt has been made to ensure the accuracy of the floorplan contained here, measurements of doors, windows, rooms and any other items are approximate and no responsibility is taken for any error, omission or mis-statement. This plan is for illustrative purposes only and should be used as such by any prospective purchaser. The services, systems and appliances shown have not been tested and no guarantee as to their operability or efficiency can be given.
Made with Metropix ©2024



Mansfield branch
24 Albert Street
Mansfield, NG1
01623 621001

Clowne branch
26 Mill Street,
Clowne, S43 4JN
01246 810519

Clay Cross branch
20 Market Street,
Clay Cross, S45 9JE
01246 251194

Chesterfield branch
33 Holywell Street,
Chesterfield, S41 7SA
01246 221039

PINEWOOD

