



Tapton Lock Hill, Tapton, Chesterfield, Derbyshire S41 7GD

 2  2  1  C

£695 Per Month

PINEWOOD



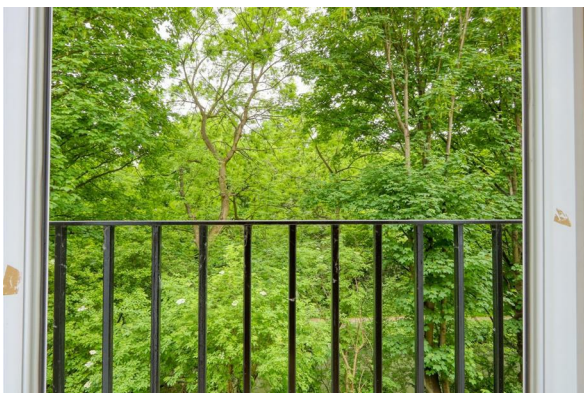
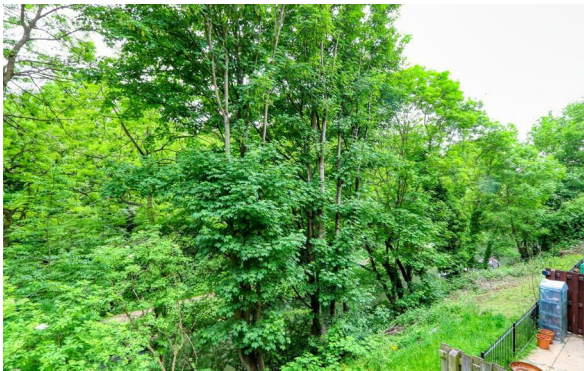
**Tapton Lock Hill  
Tapton  
Chesterfield  
Derbyshire  
S41 7GD**



**£695 Per Month**

**2 bedrooms  
2 bathrooms  
1 receptions**

- ENSUITE SHOWER ROOM TO BEDROOM ONE
- OPEN PLAN KITCHEN/DINER/LIVING AREA
- INTEGRATED APPLIANCES INCLUDE DISHWASHER, WASHING MACHINE, FRIDGE, FREEZER, OVEN/HOB AND EXTRACTOR
- CLOSE TO TOWN CENTRE - CLOSE TO ALL THE LOCAL AMENITIES ON SHEFFIELD ROAD
- NEUTRAL DECOR AND CARPETS - ENTRYPHONE - ELECTRIC HEATING
- JULIET BALCONY OVERLOOKING CHESTERFIELD CANAL
- ALLOCATED PARKING IN SECURE CAR PARK
- DOUBLE BEDROOM AND SINGLE BEDROOM
- MODERN BATHROOM WITH WHITE SUITE
- VERY WELL PRESENTED - LAMINATE FLOORING THROUGHOUT THE KITCHEN/DINER/LIVING AREA



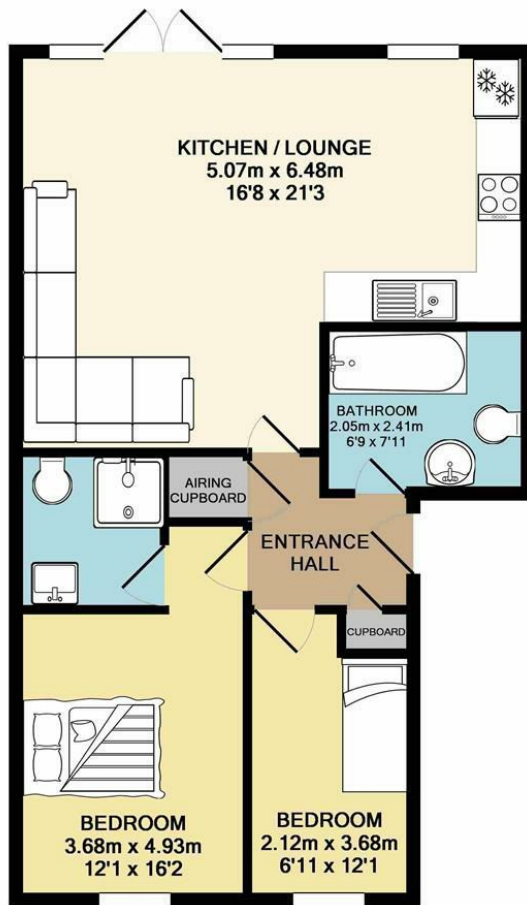
**\*\*OPEN PLAN TWO BED FIRST FLOOR APARTMENT\***This is a highly desirable TWO bed executive first floor apartment overlooking the Tipton Lock canal. A short distance from local superstores, train station, main commuter routes, 5 minutes drive to the M1 Junct 29 and Chesterfield town centre. The property comprises of a double and a single bedroom with open plan living area with juliet balcony overlooking the canal, modern kitchen with a great range of maple units with integrated appliances including oven, hob and extractor, fridge freezer, dishwasher and washer dryer, modern family bathroom with white suite and bath & en suite to master bedroom with shower cubicle, allocated parking with secure entry. Double Glazing and Electric Heating.

**\*\*VIDEO TOUR AVAILABLE - TAKE A LOOK AROUND\*\***

**\*\*PLEASE CALL PINWOOD PROPERTIES FOR MORE INFORMATION ON HOW TO APPLY AND VIEW\*\***

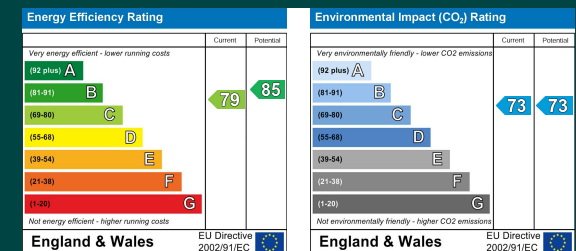
### **DISCLAIMER**

These particulars do not constitute part or all of a contract. While we endeavour to make our particulars fair, accurate and reliable, they are only a general guide to the property the photos are for reference purpose only, the white goods advertised may not be in situ and and if there are any points which are of particular importance to you or any particular white goods required please check with the office and we will be pleased to check the position on these.



TOTAL APPROX. FLOOR AREA 62.1 SQ.M. (668 SQ.FT.)

Whilst every attempt has been made to ensure the accuracy of the floor plan contained here, measurements of doors, windows, rooms and any other items are approximate and no responsibility is taken for any error, omission, or mis-statement. This plan is for illustrative purposes only and should be used as such by any prospective purchaser. The services, systems and appliances shown have not been tested and no guarantee as to their operability or efficiency can be given  
Made with Metropix ©2018



Mansfield branch  
24 Albert Street  
Mansfield, NG1  
01623 621001

Clowne branch  
26 Mill Street,  
Clowne, S43 4JN  
01246 810519

Clay Cross branch  
20 Market Street,  
Clay Cross, S45 9JE  
01246 251194

Chesterfield branch  
33 Holywell Street,  
Chesterfield, S41 7SA  
01246 221039

PINEWOOD

