



The Clarendon, Clarence Road, Chesterfield, Derbyshire S40 1LN

 1  1  2  G

£140 Per Week

PINEWOOD



The Clarendon Clarence Road

Chesterfield
Derbyshire
S40 1LN



£140 Per Week

1 bedrooms
1 bathrooms
2 receptions

- Located On The Edge of The Town Centre - Easy Access to M1 Motorway
- Penthouse Attic Room - Modern Decor - Built in Storage Room
- Close to Chatsworth Road and its Bars, Restaurants, Supermarkets and Shops
- Double Bedroom with Double Bed, Matching Wardrobe and Drawers
- Communal Modern Kitchen with Separate Utility Area
- Washing Machine, Dishwasher, Tumble Dryer, Microwave, Aga Oven and Stove, Fridge, Freezer and Toaster
- Modern Ensuite Shower Room
- Communal Lounge and Dining Room
- Utilities included in Rent - £100 Bond - Fibre Broadband
- Pleasant Communal Rear Gardens





****TOWN CENTRE**DOUBLE PART FURNISHED SECOND FLOOR BEDROOM IN A DELIGHTFUL HOUSE SHARE**ALL UTILITIES INCLUDED**A delightful part furnished second floor double bedroom with en suite bathroom with shower over bath in a communal property in the town centre location within walking distance to the town centre and train station and close to the bustling Chatsworth Road with its host of bars, shops and restaurants. The bedroom includes a double bed, a sets of drawers, curtains, radiator, wardrobe and use of all the communal areas which include a communal lounge with sofas and T.V, communal dining room with dining table and chairs, communal modern kitchen with use of a microwave, fridge freezer, oven, hob, utility room with washing machine and tumble dryer, and modern communal shower room. The washing facilities, gas, water, council tax, T.V, shower and electric are included in the monthly rent. There is also access to the rear communal pleasant gardens. uPVC and Gas Central Heating. ****FIBRE BROADBAND FITTED**SHORT TERM AND LONG TERM LETS OFFERED******

****VIRTUAL VIDEO TOUR AVAILABLE - TAKE A TOUR****

****PLEASE CALL PINWOOD PROPERTIES FOR MORE INFORMATION OR TO ARRANGE YOUR VIEWING****

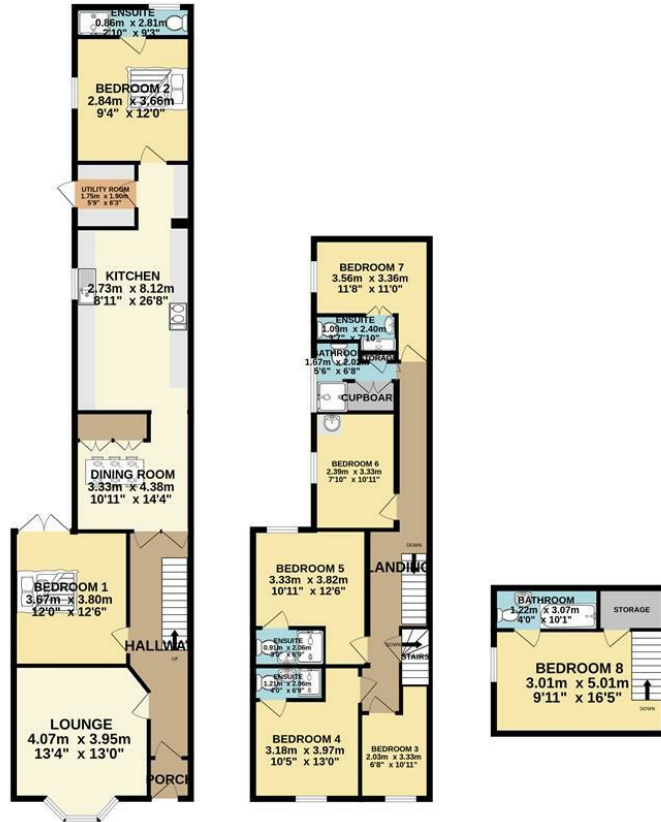
DISCLAIMER

These particulars do not constitute part or all of a contract. While we endeavour to make our particulars fair, accurate and reliable, they are only a general guide to the property the photos are for reference purpose only, the white goods advertised may not be in situ and and if there are any points which are of particular importance to you or any particular white goods required please check with the office and we will be pleased to check the position on these.

GROUND FLOOR
91.9 sq.m. (989 sq.ft.) approx.

1ST FLOOR
68.4 sq.m. (737 sq.ft.) approx.

2ND FLOOR
21.1 sq.m. (227 sq.ft.) approx.



TOTAL FLOOR AREA: 181.4 sq.m. (1953 sq.ft.) approx.

Whilst every attempt has been made to ensure the accuracy of the floorplan contained here, measurements of doors, windows, rooms and any other items are approximate and no responsibility is taken for any error, omission or mis-statement. This plan is for illustrative purposes only and should be used as such by any prospective purchaser. The services, systems and appliances shown have not been tested and no guarantee as to their operability or efficiency can be given.
Made with Metropix ©2024

Mansfield branch
24 Albert Street
Mansfield, NG1
01623 621001

Clowne branch
26 Mill Street,
Clowne, S43 4JN
01246 810519

Clay Cross branch
20 Market Street,
Clay Cross, S45 9JE
01246 251194

Chesterfield branch
33 Holywell Street,
Chesterfield, S41 7SA
01246 221039

PINEWOOD

