



Richmond Place TR26 1JN

Asking Price £270,000

Tenure - Leasehold

Council Tax Band - A

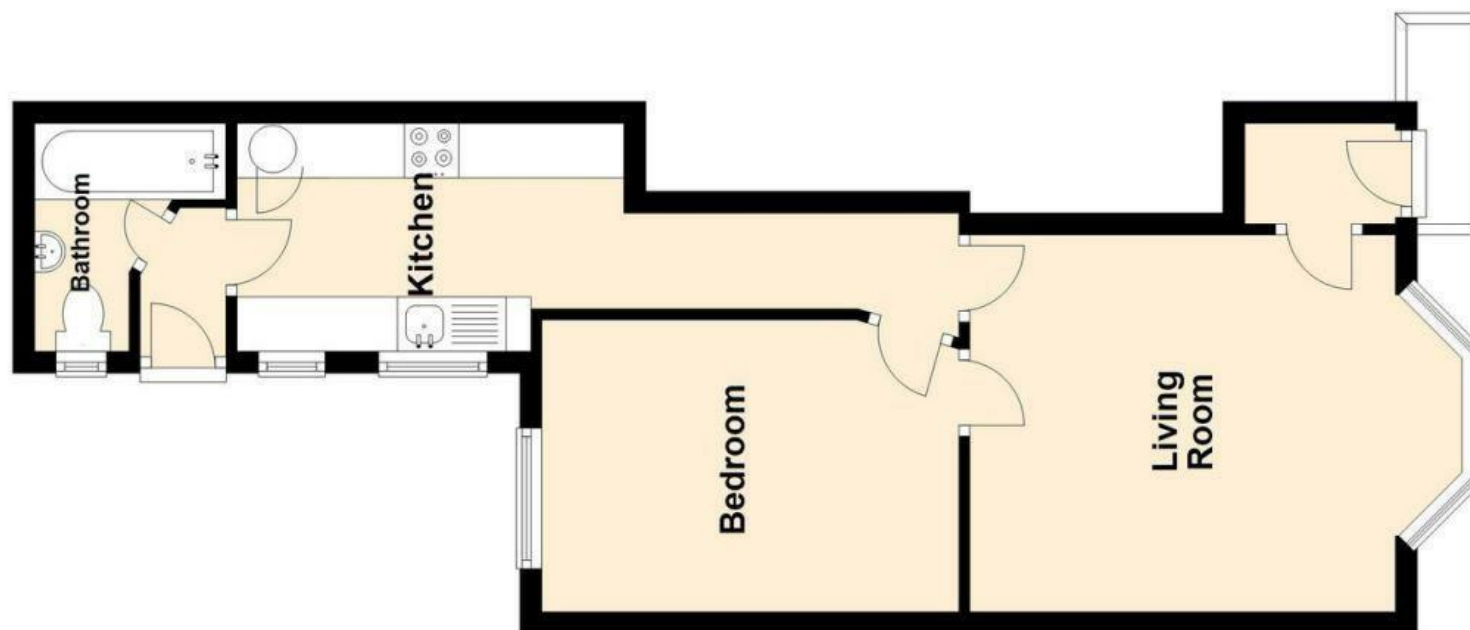
Floor Area - 431.60 sq ft

- Town Centre Location
- Ideal Investment
- Double Bedroom
- Walking Distance from Harbour and Beaches
- Leasehold
- EPC - E40
- Council Tax - Band A



Directions To Property

From our St Ives office head down into the town and head through the Hepworth Gardens. Turn left on leaving the garden and the property will be found on the right. Noted by the agents for sale board.



NOT TO SCALE AND MEASUREMENTS ARE ONLY APPROXIMATE FOR ILLUSTRATIVE PURPOSES ONLY. DECORATIVE FINISHES, FIXTURES, FITTINGS AND FURNISHINGS DO NOT REPRESENT THE CURRENT STATE OF THE PROPERTY. MEASUREMENTS ARE APPROXIMATE. NOT TO SCALE



Contact Us

1 Tregenna Hill
St Ives
Cornwall
TR26 1SE

E: st.ives@millerson.com
T: 01736 798833

Valuation Request



Energy Efficiency Rating		Current	Potential
Very energy efficient - lower running costs			
(92 plus)	A		
(81-91)	B		80
(69-80)	C		
(55-68)	D		
(39-54)	E	40	
(21-38)	F		
(1-20)	G		
Not energy efficient - higher running costs			
England & Wales		EU Directive 2002/91/EC	