



## Portnall Road, W9

### £550,000

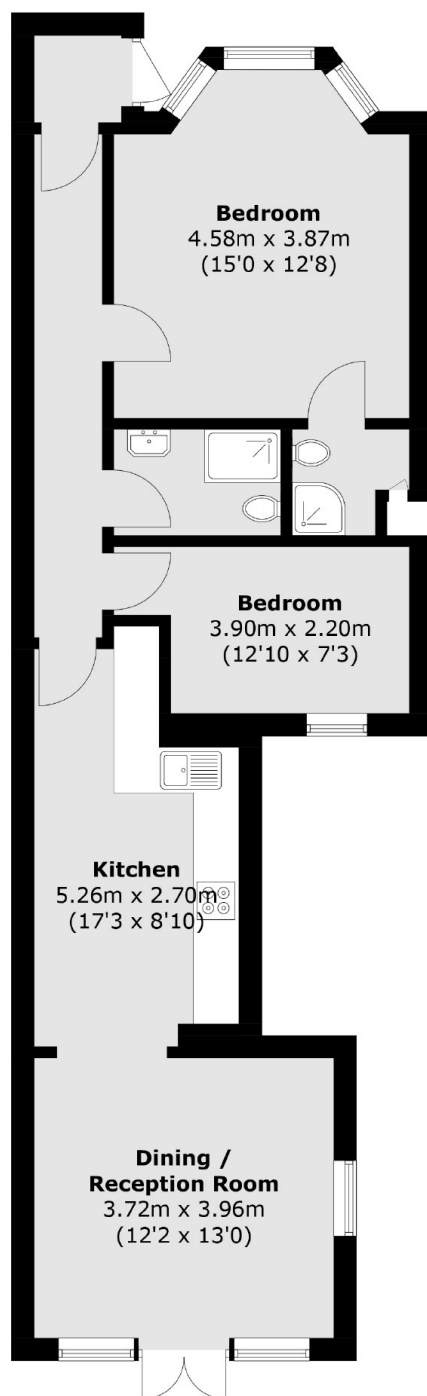
A charming garden flat within a Victorian conversion, featuring two spacious double bedrooms one with an en suite and bay window. The property also boasts an open plan living area and direct access to a private rear garden.

Portnall Road is ideally situated near the charming cafés and shops of Salusbury Road, with easy access to Queens Park, Westbourne Park, and Maida Vale underground stations, providing convenient links to Central London.

### Features

- Private Entrance
- Two Bathrooms
- Open Plan Reception
- Victorian Conversion
- Private Garden
- Chain Free

# Portnall Road, Maida Vale, W9



Total area (approx.): 67.9 sq. m (730.8 sq. ft)

## Dexters

Maida Vale  
298 Elgin Avenue  
London  
W9 1JS  
Sales  
020 7266 2020

Energy Rating: C. We aim to make our particulars both accurate and reliable. However they are not guaranteed; nor do they form part of an offer or contract. If you require clarification on any points then please contact us, especially if you're traveling some distance to view. Please note that appliances and heating systems have not been tested and therefore no warranties can be given as to their good working order.

 **RICS** | Regulated  
Estate Agent  
and Letting Agent

[dexters.co.uk](https://www.dexters.co.uk)