



Shirland Road, W9

£525,000

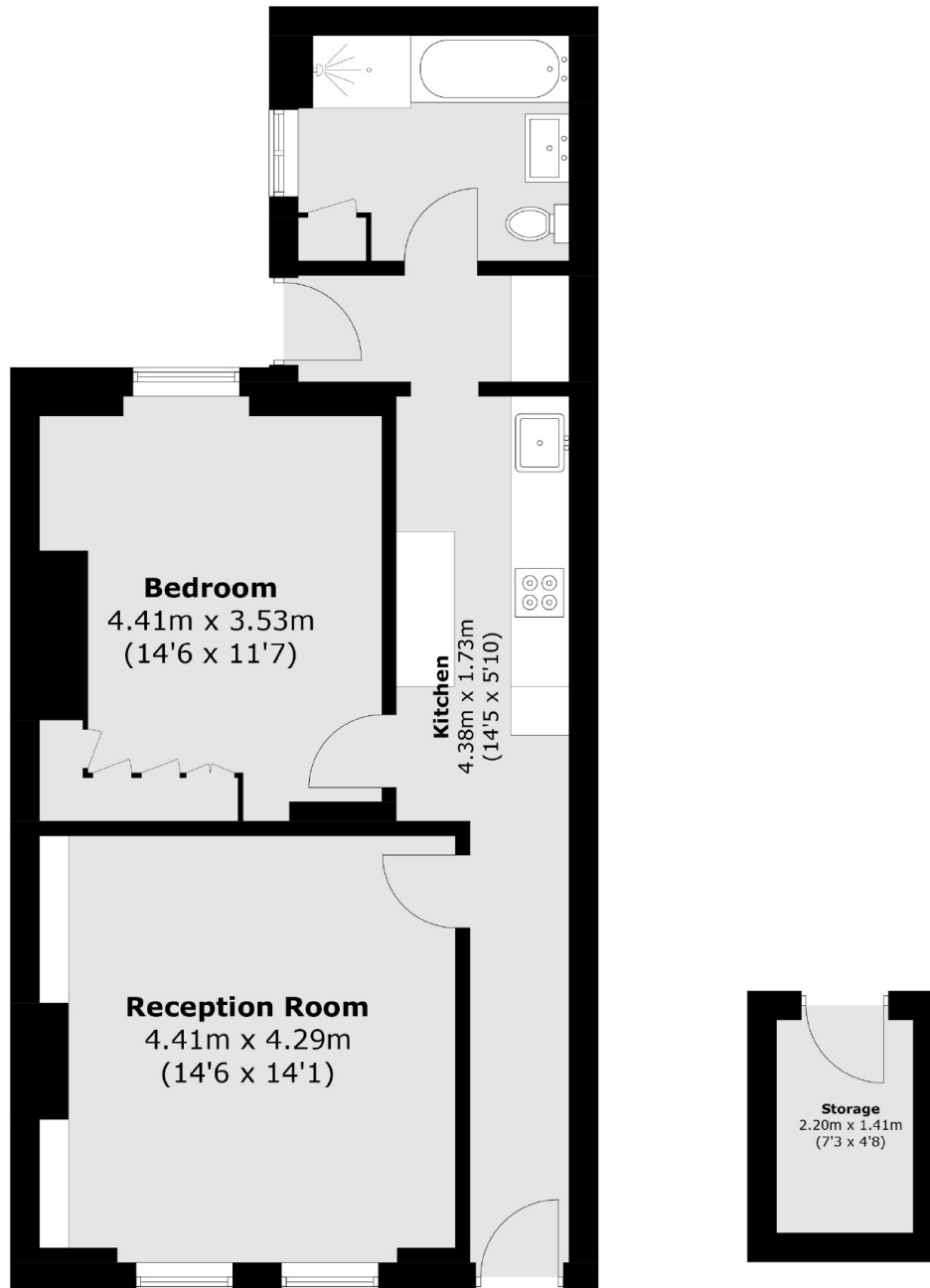
A modern lower ground one bedroom flat with a large reception room and private garden. The apartment is comprised of a double bedroom with built-in wardrobes, separate kitchen and plenty of storage space. The property is being offered with a long lease.

Shirland Road is ideally located for both Maida Vale and Warwick Avenue underground stations, the open spaces of Paddington recreational grounds and a number of independent shops and cafes that run along Elgin Avenue. The flat is within walking distance of The Hero pub and the lifestyle amenities of Westbourne Park and Notting Hill.

Features

- One Double Bedroom
- Separate Kitchen
- Natural Light
- Wooden Flooring
- Great Location
- Near Transport links

Shirland Road, Maida Vale, W9



**(Not Shown In Actual
Location / Orientation)**

Total area (approx.): 59.5 sq. m (640.4 sq. ft)
Storage : 3.2 sq. m (34.4 sq. ft)