



Ashmore Road, W9

£550,000

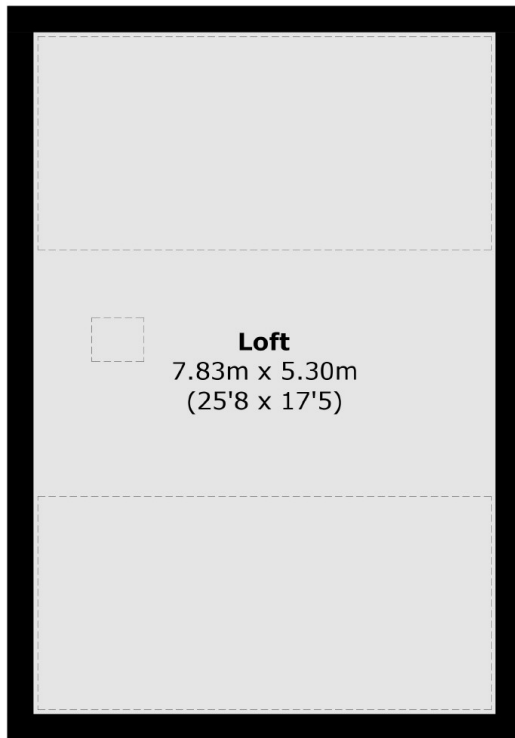
This is a two bedroom apartment set in a characterful Victorian conversion. This flat has an open plan kitchen, a modern bathroom, ample storage and enjoys plenty of natural light. There's further scope to develop into the demised loft space STPP.

Ashmore Road offers excellent access to Queen's Park and Westbourne Park, with numerous transport links to Central London. It is also within a mile of Little Venice, Portobello, and Paddington Recreation Ground.

Features

- Share Of Freehold
- Chain Free
- Top Floor Flat
- Transport Links
- High Ceilings
- Loft Space Demised

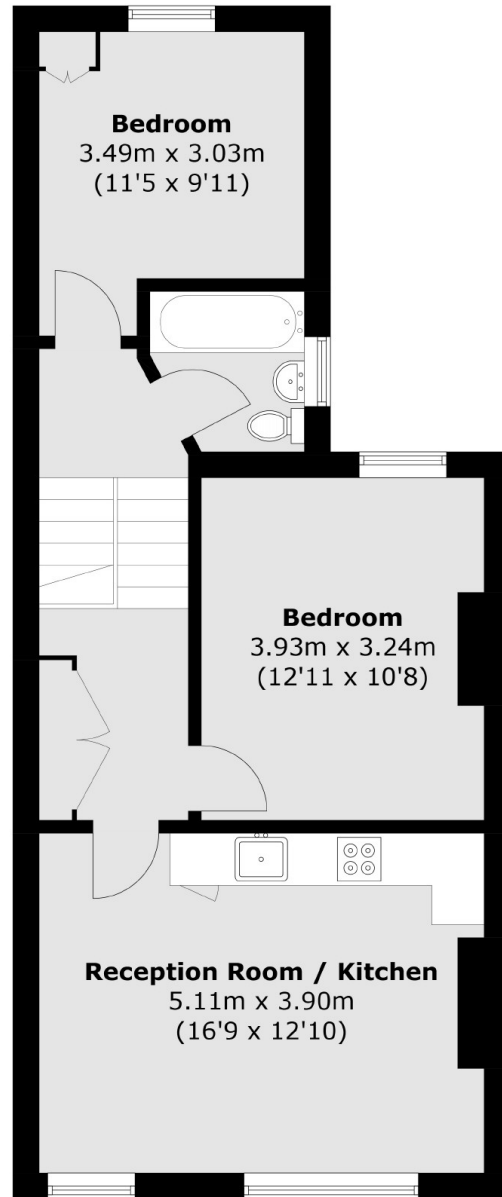
Ashmore Road, Maida Vale, W9



Loft



First Floor



Second Floor

Total area (approx.): 100.7 sq. m (1,083.9 sq. ft)